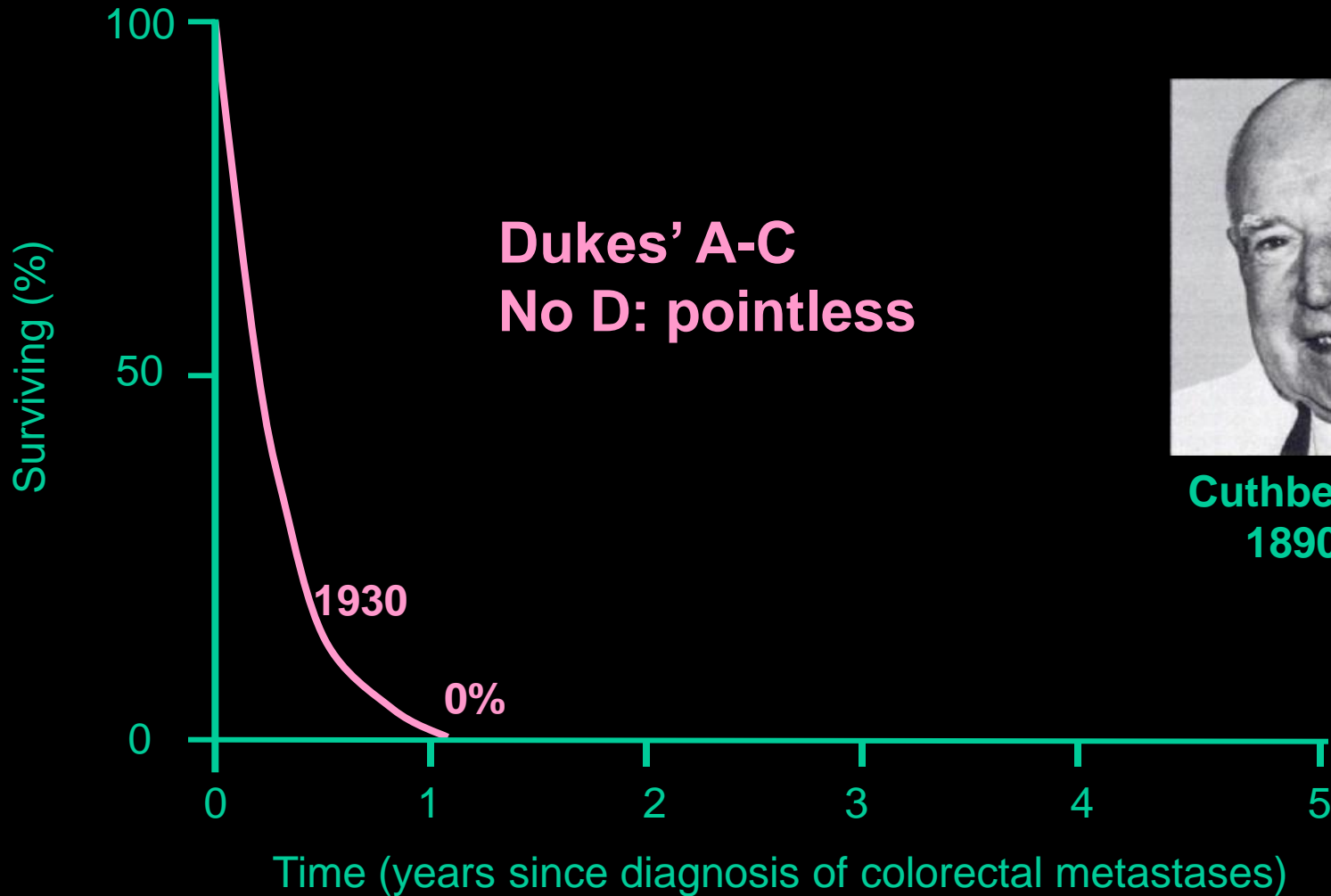




Overall survival in advanced colorectal cancer in 1930



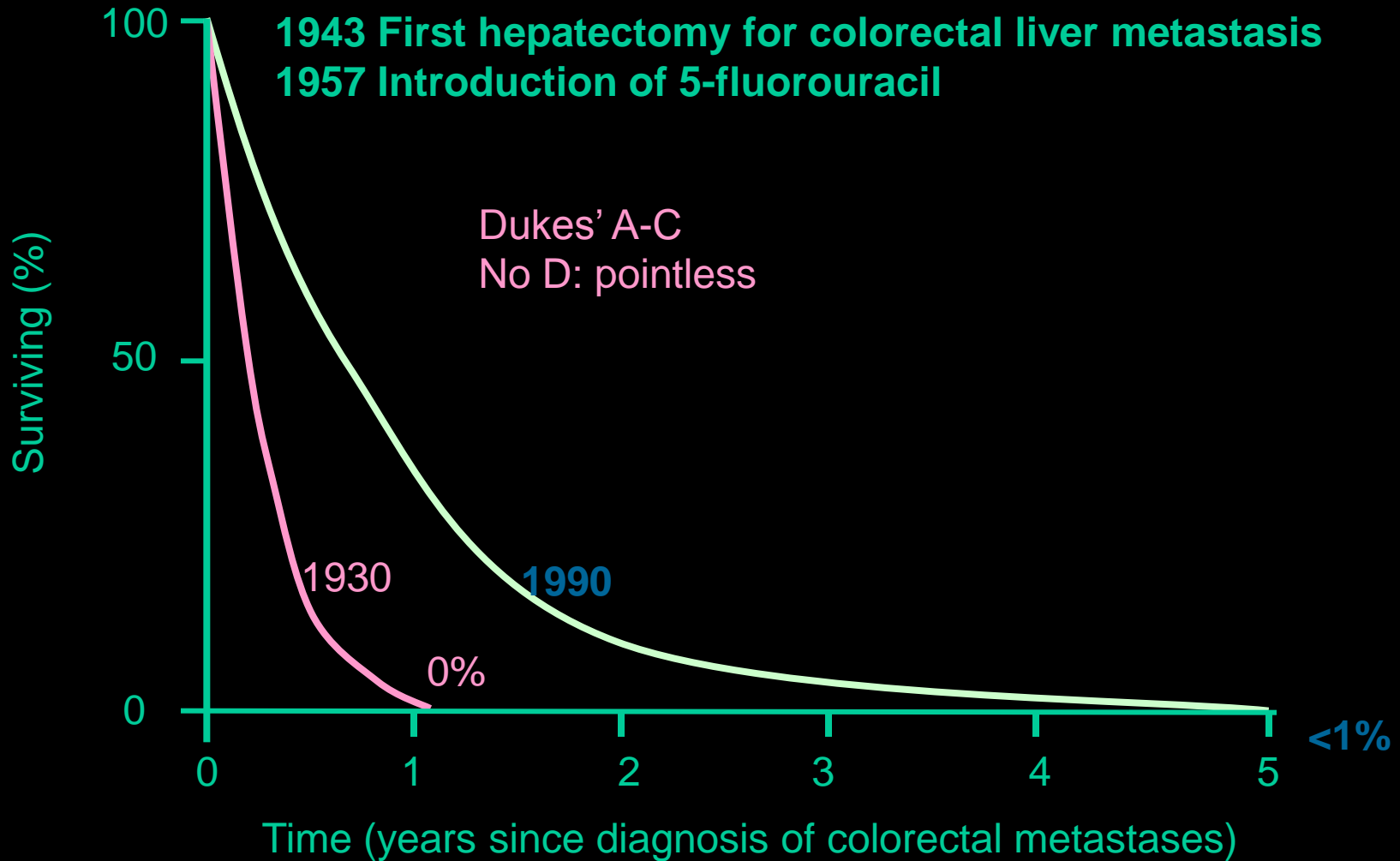
Cuthbert Dukes
1890-1977

Management algorithm for advanced CRLM in 1930

Best supportive care



Overall survival in advanced colorectal cancer 1930 – 1990



Management algorithm for advanced CRLM in 1990

- **Best supportive care**
- **Palliative 5-FU + FA**
- **Surgery for very few**

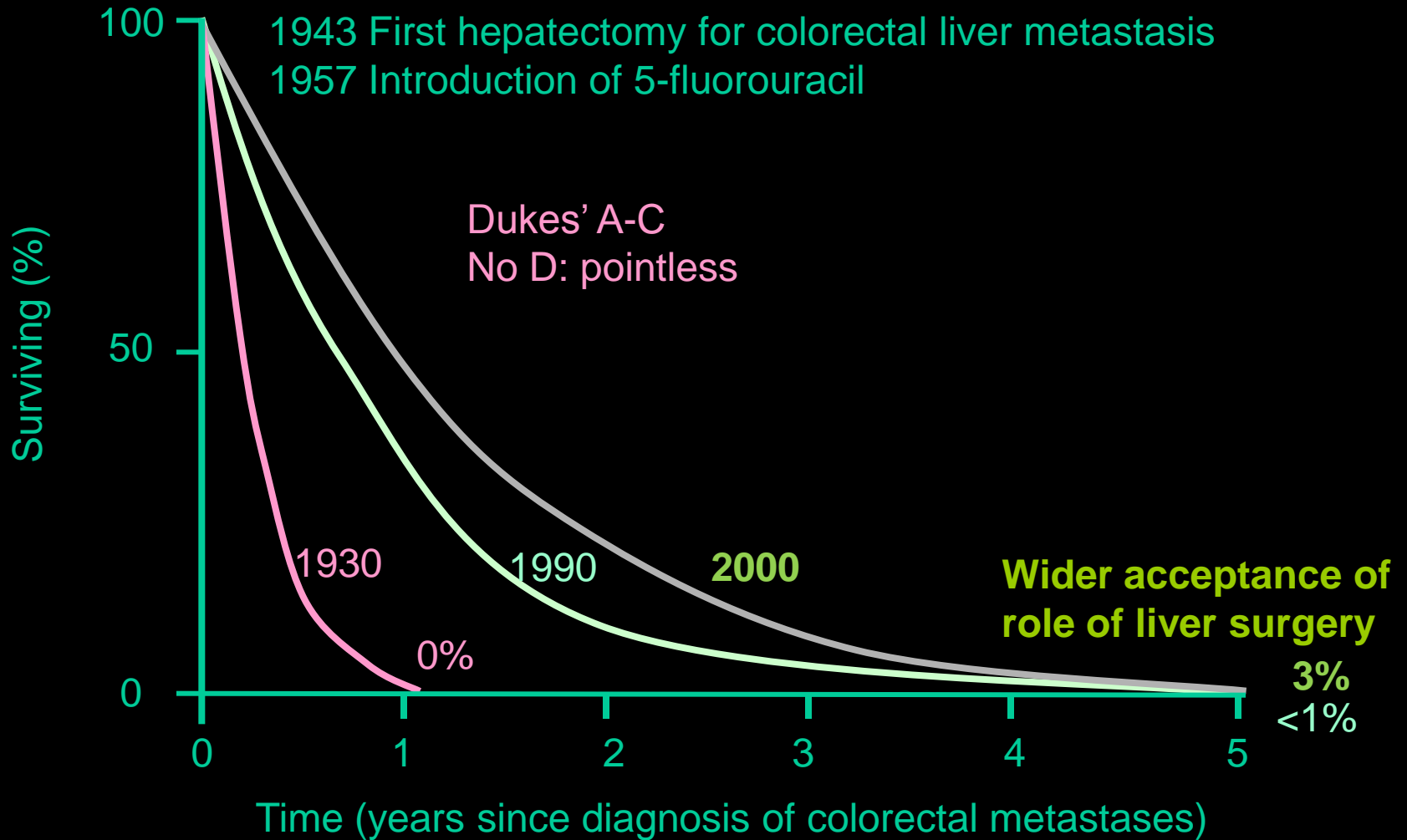
Resection for CRC liver metastases: traditional definition of resectability in 2001

Rougier et al 1995, Rees et al 1997

- **Metachronous detection**
- **Unilobar disease**
- **<4 metastases**
- **<5 cm largest metastasis**
- **>1 cm resection margin**
- **CEA <100**
- ***If we accepted these criteria then less than 10% of patients were eligible for surgery, of whom only 1:3 stood a chance of being cured***
- ***Only 5-FU based chemotherapy***



Overall survival in advanced colorectal cancer 1930 – 2000



Management algorithm for advanced CRLM in 2000

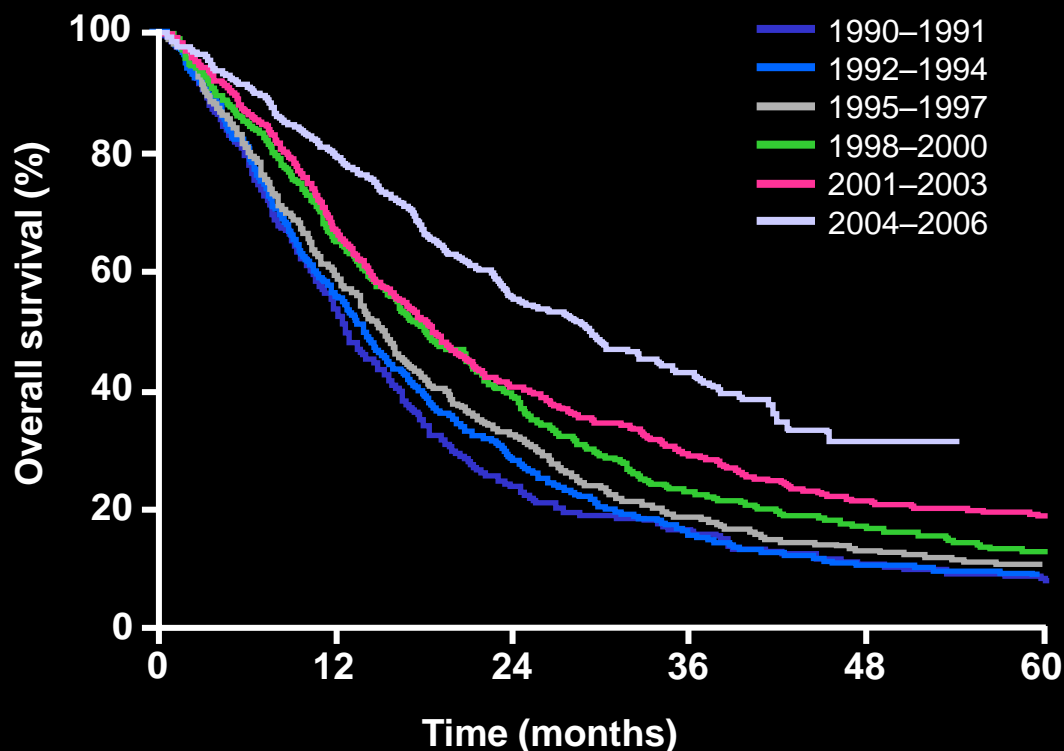
- **Best supportive care**
- **Palliative 5-FU + FA +/- oxaliplatin or irinotecan**
- **Surgery for a few more**



Overall survival for patients with mCRC treated at MD Anderson and Mayo clinics, by year of diagnosis

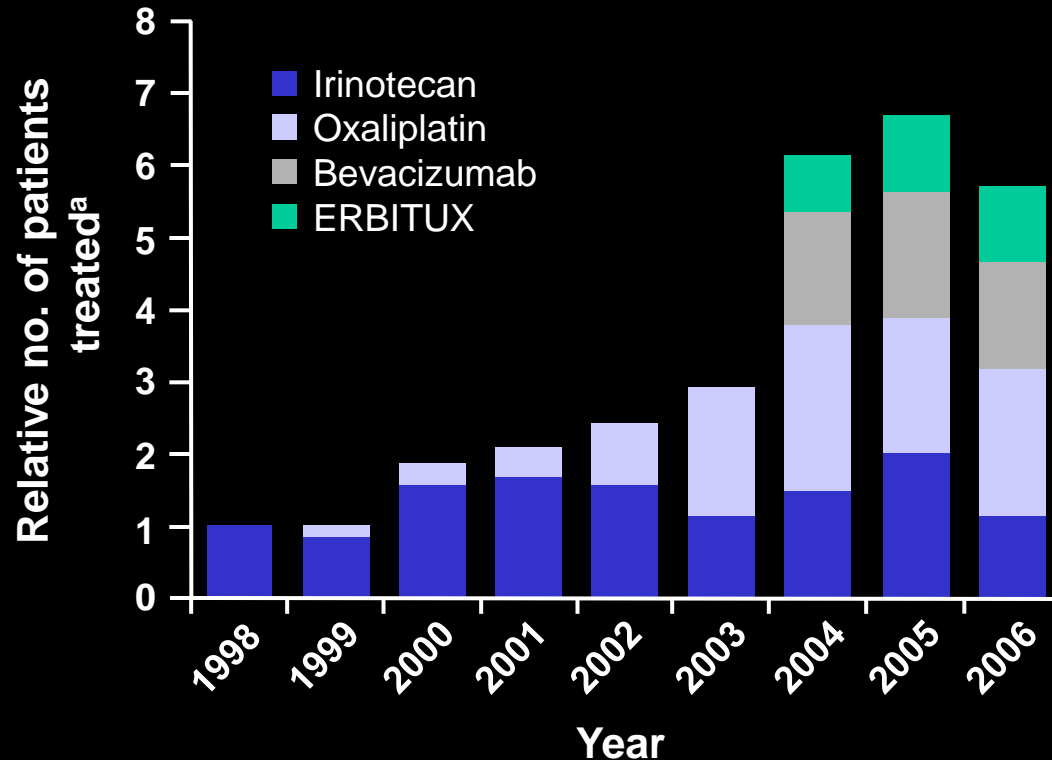
Kopetz S, et al. J Clin Oncol 2009;27:3677–83

- 2470 patients from two highly specialized centers



Over the past decade, OS has improved substantially in patients with mCRC

Use of novel therapies and multidisciplinary management has triggered the increase in overall survival



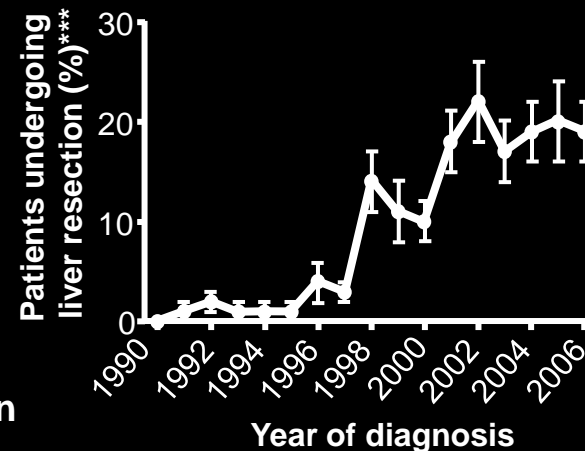
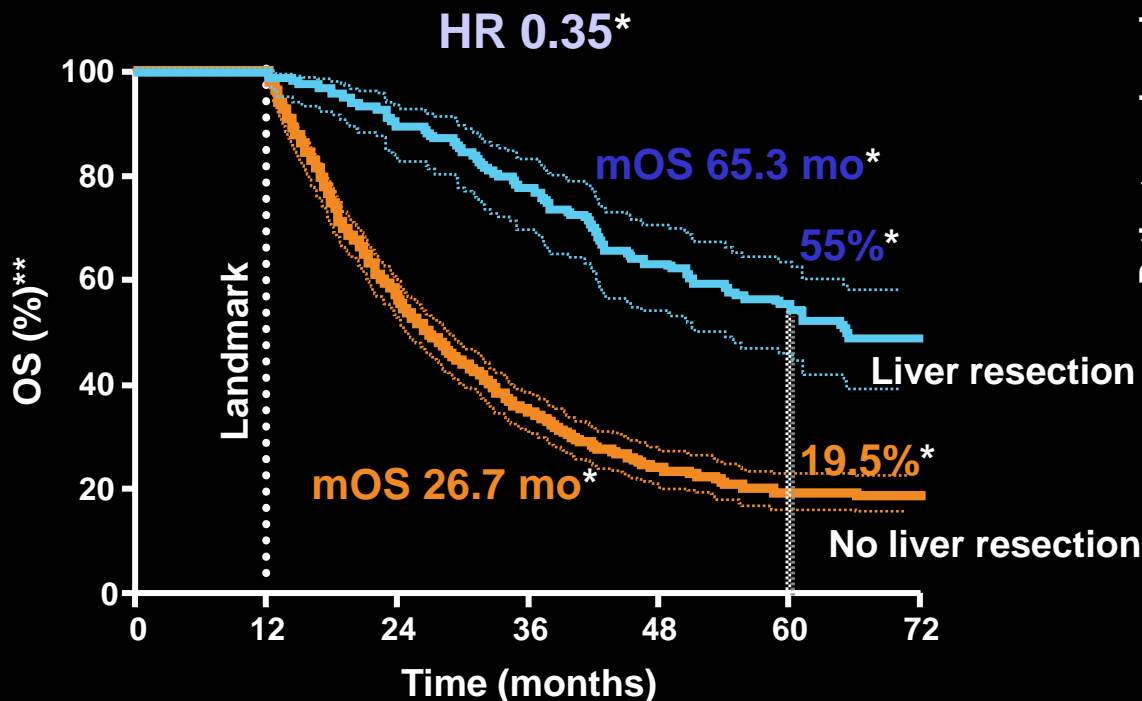
The increase in OS in non-resected patients corresponds with the use of currently available targeted therapies: ERBITUX and bevacizumab

^aCompared with irinotecan use in 1998



Liver resection improves long-term survival

- 12-month landmark analysis evaluated the impact of liver resection on OS
- Patients from two highly specialized centers were included (MD Anderson and Mayo Clinic)



Liver resection offers a real chance for cure

*70% of population included; **Dotted lines represent 95% CIs

***Error bars represent standard error of the mean

Kopetz S, et al. J Clin Oncol 2009;27:3677-3683

Five-year survival of English colorectal cancer patients first diagnosed 1998–2004 (n=114,155)

Morris EJA, Forman D, Thomas JD, Quirke P, Taylor EF, Fairley L, Cottier B, Poston G. *Brit J Surg* 2010; 97: 1110-8

