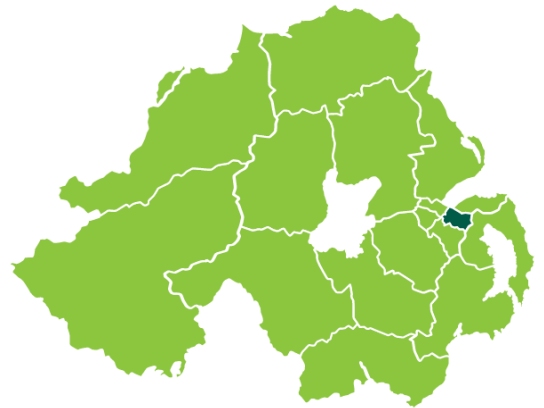


# CANCER IN EAST BELFAST GP FEDERATION

Almost 1 in 4 cases (24%) of the most common types of cancer – breast, prostate, colorectal and lung – diagnosed here are in someone aged 80 or over (compared to 18% in all NI)



Cancer is more common in East Belfast GPF than in all NI.

Average cases 2011-15:

**536** East Belfast GPF

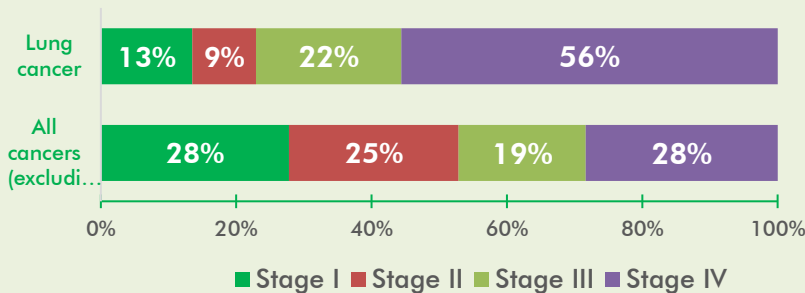
**9,073** Northern Ireland



Cancers diagnosed per 100,000 people

Late diagnosis is much more likely for lung cancer than other cancers.

Known stage at diagnosis for cancers in East Belfast GPF (2011-15)



More than half of people with lung cancer were diagnosed at Stage IV (56%).

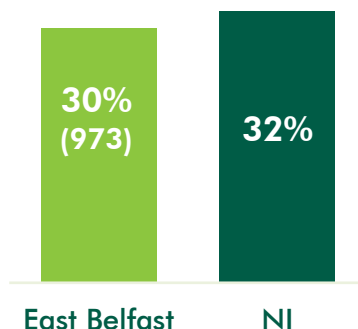
This is much higher than the rate for all of Northern Ireland (50%).

3,208 people living with cancer up to 23 years at end of 2015 (58,586 NI).

**WE ARE MACMILLAN. CANCER SUPPORT**



Proportion at 1-5 years since diagnosis



23-year prevalence by age (East Belfast GPF outer ring, NI inner)

