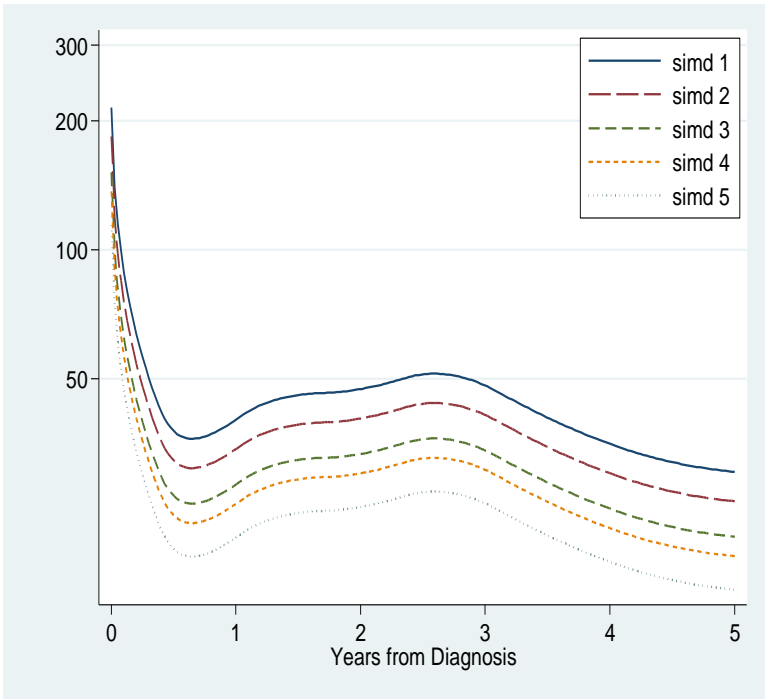


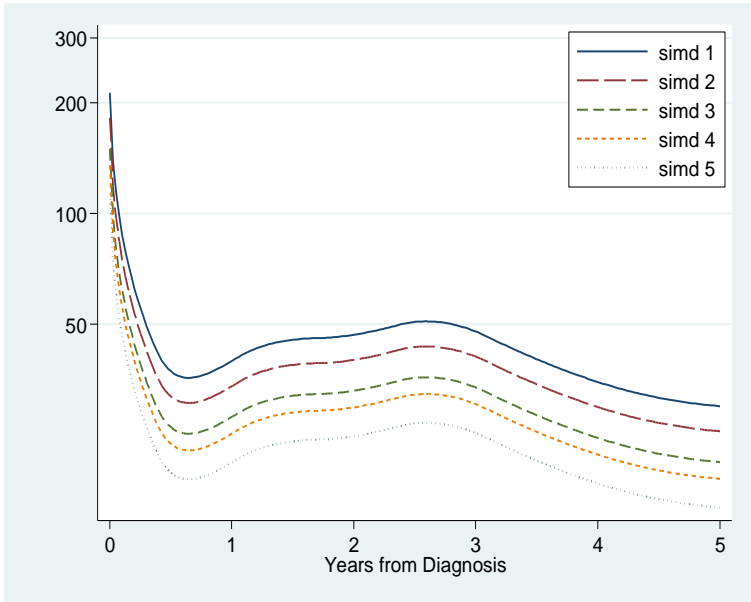
**Appendix D: Full list of figures relating to excess mortality and associated deprivation hazard ratios (available on request)**

Breast Cancer



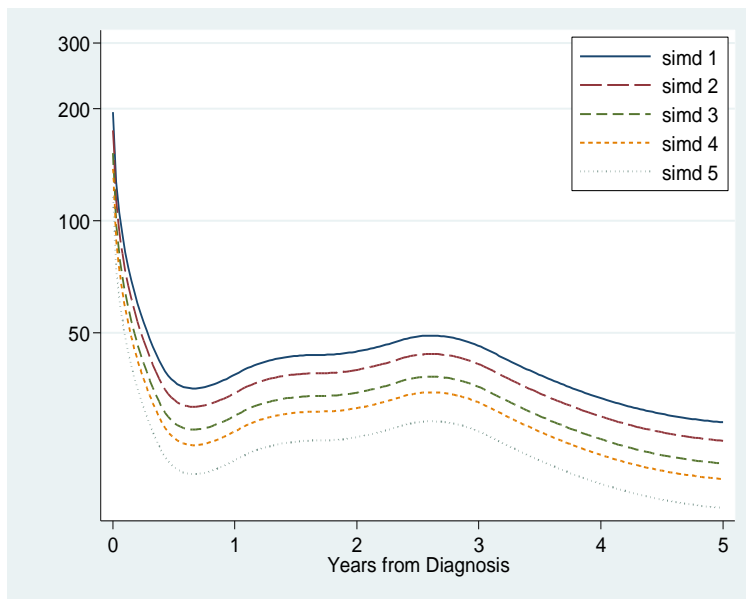
Unadjusted HR	95% CI	
	LCI	UCI
<b>SIMD (2009)</b>		
1 (Most deprived)	1.89	1.61 2.16
2	1.61	1.37 1.85
3	1.33	1.13 1.53
4	1.20	1.01 1.39
5 (Least deprived)	1.00	

Figure D1: Excess Mortality from breast cancer by deprivation.



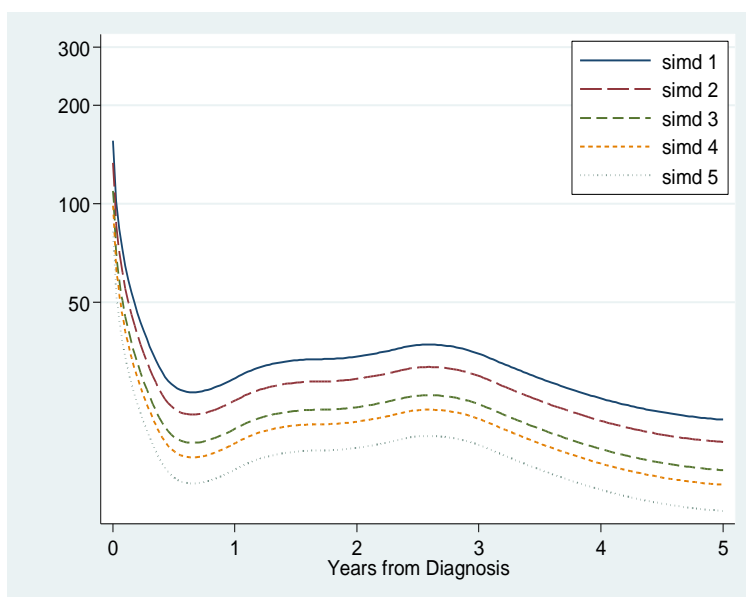
	Hazard Ratio	95% CI	
		LCI	UCI
SIMD (2009)			
1 (Most deprived)	1.89	1.61	2.17
2	1.61	1.37	1.85
3	1.33	1.12	1.53
4	1.20	1.01	1.39
5 (Least deprived)	1.00		

Figure D2: Excess Mortality from breast cancer by deprivation (incorporating age)



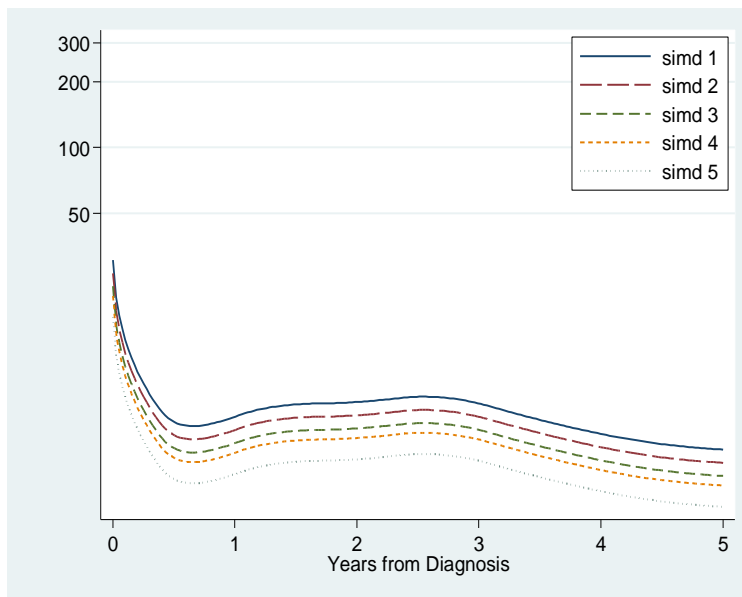
	Hazard Ratio	95% CI	
		LCI	UCI
SIMD (2009)			
1 (Most deprived)	1.70	1.45	1.95
2	1.52	1.30	1.74
3	1.32	1.12	1.51
4	1.20	1.01	1.38
5 (Least deprived)	1.00		

Figure D3: Excess Mortality from breast cancer by deprivation (incorporating Charlson Index of co-morbidity)



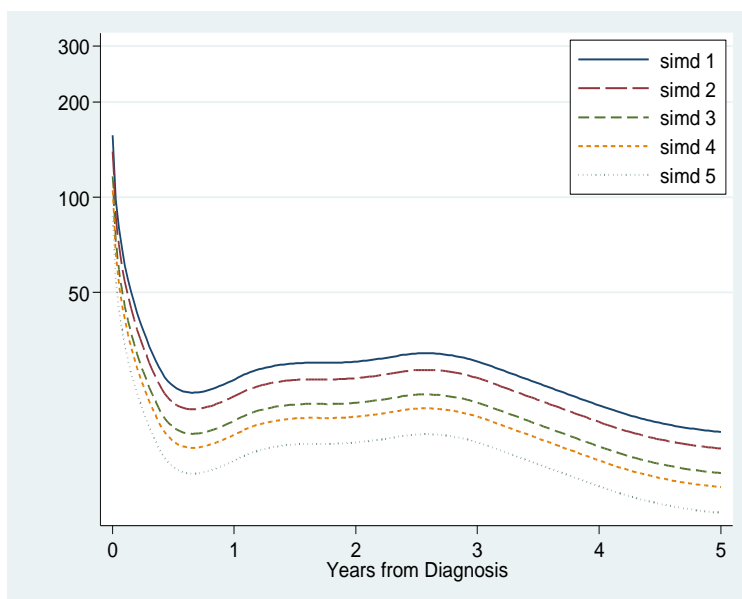
	Hazard Ratio	95% CI	
		LCI	UCI
SIMD (2009)			
1 (Most deprived)	1.90	1.62	2.18
2	1.62	1.38	1.86
3	1.33	1.13	1.54
4	1.20	1.01	1.39
5 (Least deprived)	1.00		

Figure D4: Excess Mortality from breast cancer by deprivation (incorporating inpatient bed days)



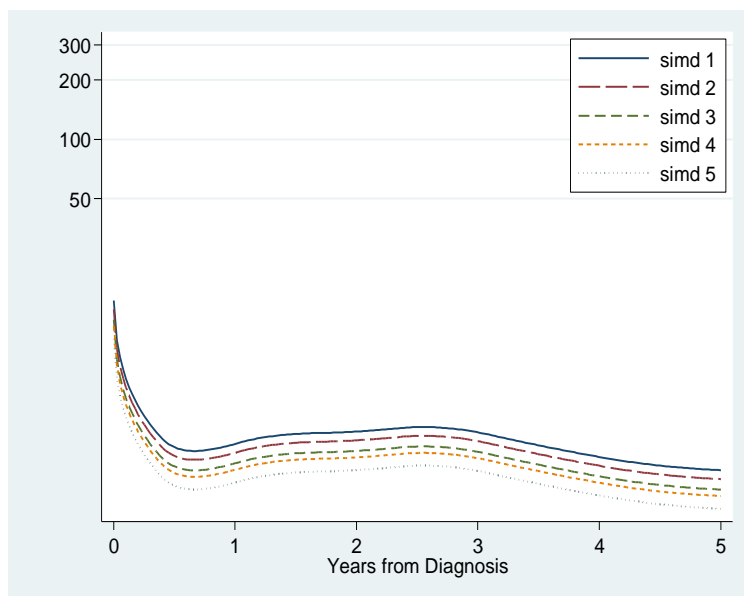
	Hazard Ratio	95% CI	
		LCI	UCI
SIMD (2009)			
1 (Most deprived)	1.83	1.56	2.09
2	1.59	1.36	1.82
3	1.38	1.18	1.59
4	1.25	1.06	1.44
5 (Least deprived)	1.00		

Figure D5: Excess Mortality from breast cancer by deprivation (incorporating screening (Y/N))



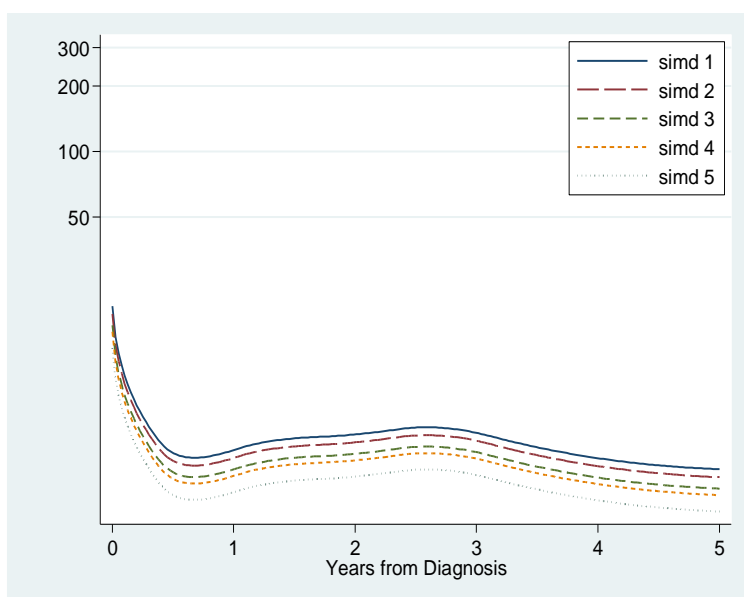
	Hazard Ratio	95% CI	
		LCI	UCI
<b>SIMD (2009)</b>			
1 (Most deprived)	1.80	1.54	2.07
2	1.60	1.36	1.83
3	1.34	1.13	1.54
4	1.21	1.02	1.39
5 (Least deprived)	1.00		

Figure D6: Excess Mortality from breast cancer by deprivation (incorporating ER Status)



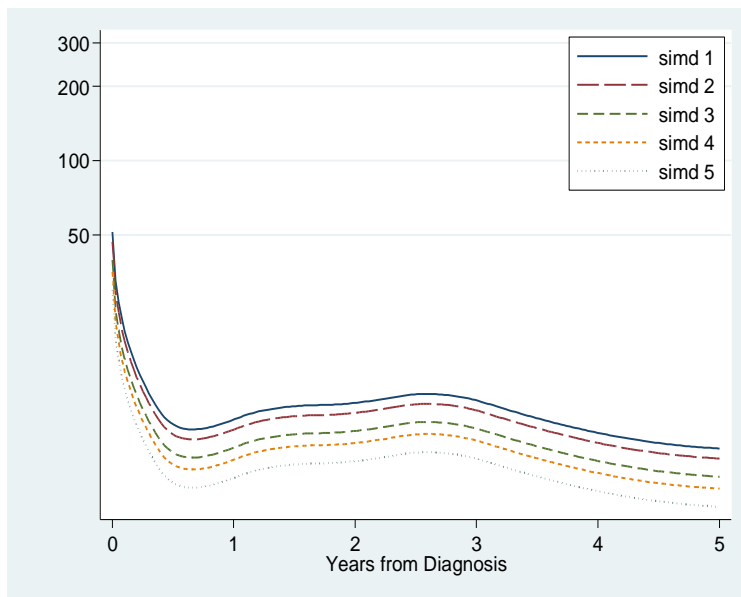
	Hazard Ratio	95% CI	
		LCI	UCI
SIMD (2009)			
1 (Most deprived)	1.57	1.35	1.78
2	1.41	1.22	1.61
3	1.25	1.07	1.43
4	1.16	0.99	1.33
5 (Least deprived)	1.00		

Figure D7: Excess Mortality from breast cancer by deprivation (incorporating grade of differentiation)



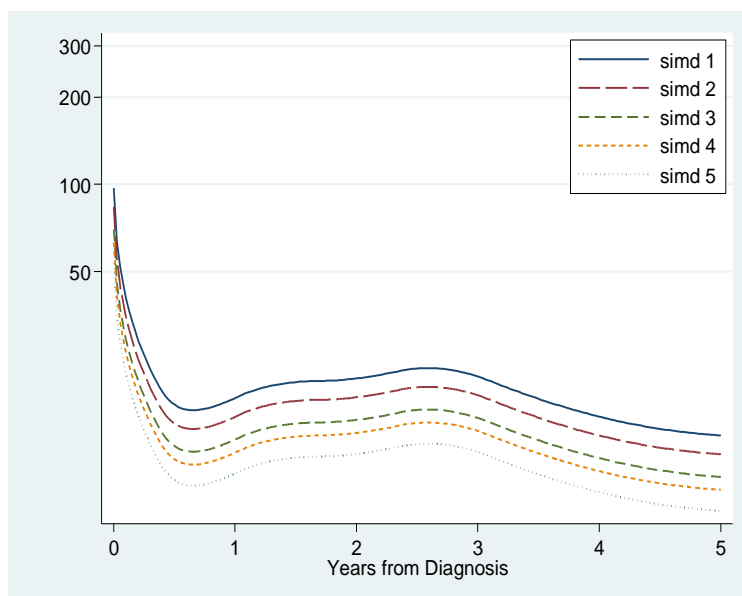
	Hazard Ratio	95% CI	
		LCI	UCI
SIMD (2009)			
1 (Most deprived)	1.56	1.35	1.78
2	1.44	1.24	1.63
3	1.27	1.09	1.45
4	1.19	1.02	1.36
5 (Least deprived)	1.00		

Figure D8: Excess Mortality from breast cancer by deprivation (incorporating stage)



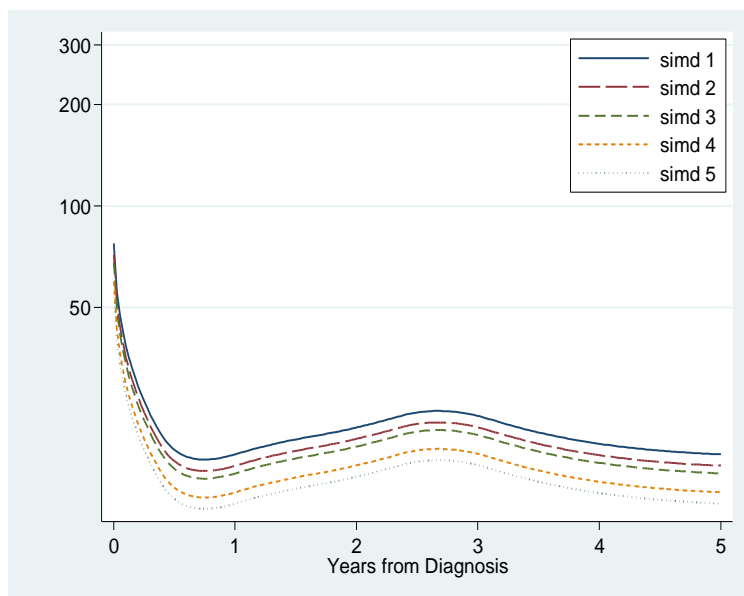
	Hazard Ratio	95% CI	
		LCI	UCI
SIMD (2009)			
1 (Most deprived)	1.72	1.48	1.97
2	1.57	1.35	1.79
3	1.33	1.13	1.52
4	1.18	1.01	1.36
5 (Least deprived)	1.00		

Figure D9: Excess Mortality from breast cancer by deprivation (incorporating Morphology Prognosis))



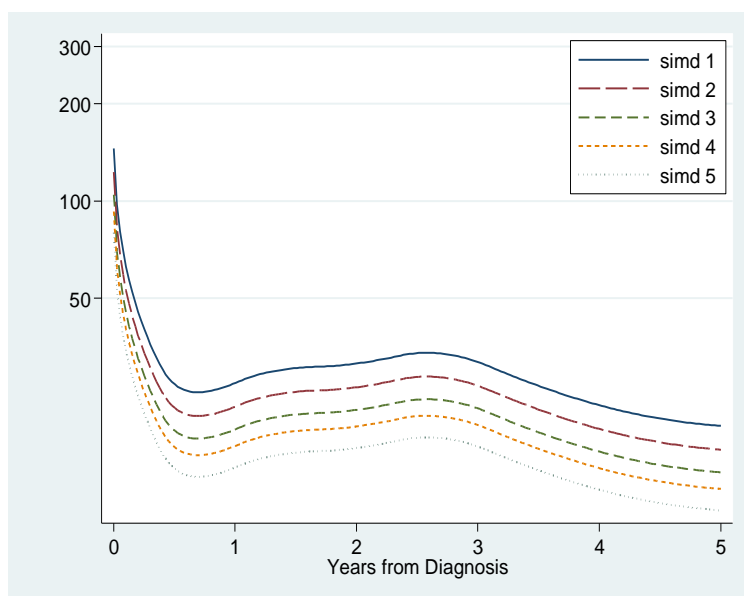
	Hazard Ratio	95% CI	
		LCI	UCI
SIMD (2009)			
1 (Most deprived)	1.82	1.55	2.09
2	1.57	1.34	1.80
3	1.31	1.11	1.51
4	1.18	1.00	1.37
5 (Least deprived)	1.00		

Figure D10: Excess Mortality from breast cancer by deprivation (incorporating Clinical trial)



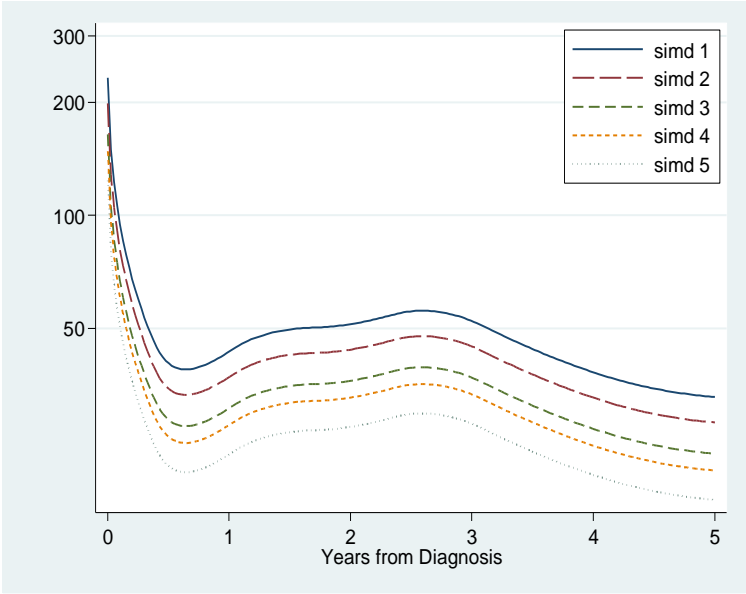
	Hazard Ratio	95% CI	
		LCI	UCI
<b>SIMD (2009)</b>			
1 (Most deprived)	1.40	1.22	1.58
2	1.30	1.13	1.46
3	1.23	1.07	1.39
4	1.08	0.94	1.22
5 (Least deprived)	1.00		

Figure D11: Excess Mortality from breast cancer by deprivation (incorporating Surgery)



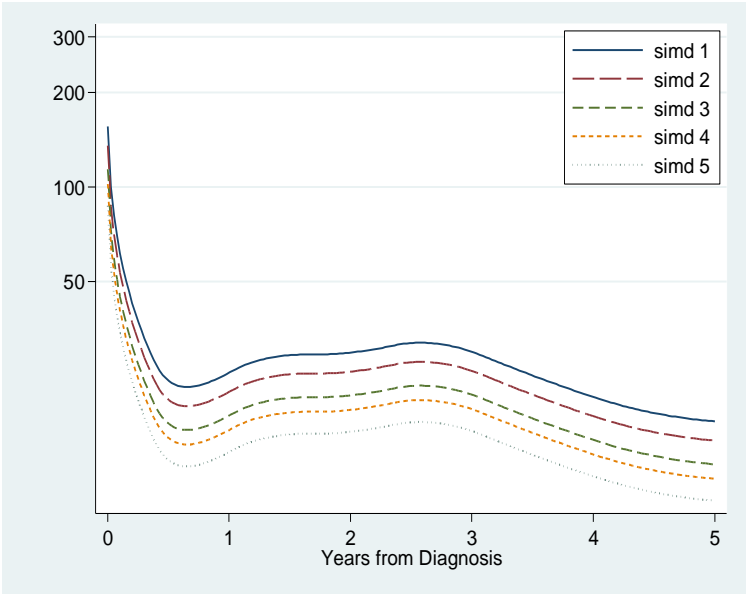
	Hazard Ratio	95% CI	
		LCI	UCI
<b>SIMD (2009)</b>			
1 (Most deprived)	1.83	1.56	2.09
2	1.54	1.32	1.76
3	1.31	1.12	1.51
4	1.17	0.99	1.34
5 (Least deprived)	1.00		

Figure D12: Excess Mortality from breast cancer by deprivation (incorporating Radiotherapy)



	Hazard Ratio	95% CI	
		LCI	UCI
<b>SIMD (2009)</b>			
1 (Most deprived)	1.88	1.60	2.16
2	1.61	1.37	1.85
3	1.33	1.12	1.53
4	1.20	1.01	1.38
5 (Least deprived)	1.00		

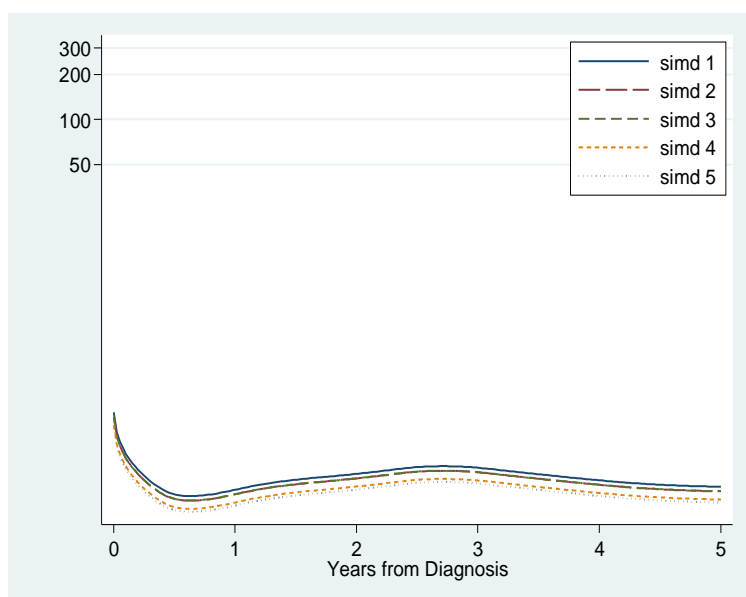
Figure D13: Excess Mortality from breast cancer by deprivation (incorporating Chemotherapy)



	Hazard Ratio	95% CI	
		LCI	UCI
<b>SIMD (2009)</b>			
1 (Most deprived)	1.79	1.52	2.05
2	1.55	1.32	1.78
3	1.31	1.11	1.51
4	1.17	0.99	1.36
5 (Least deprived)	1.00		

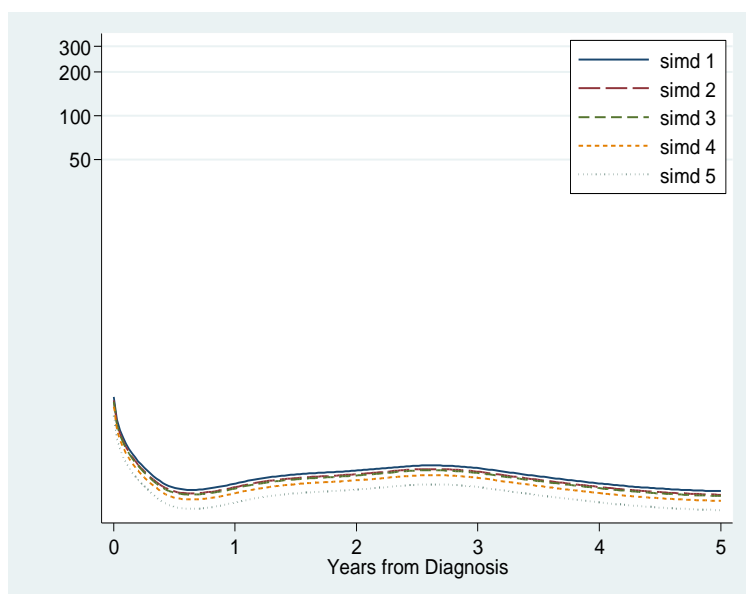
Figure D14: Excess Mortality from breast cancer by deprivation (incorporating Hormonal therapy)





	Hazard Ratio	95% CI	
		LCI	UCI
<b>SIMD (2009)</b>			
1 (Most deprived)	1.27	1.11	1.43
2	1.19	1.04	1.34
3	1.19	1.04	1.34
4	1.05	0.91	1.18
5 (Least deprived)	1.00		

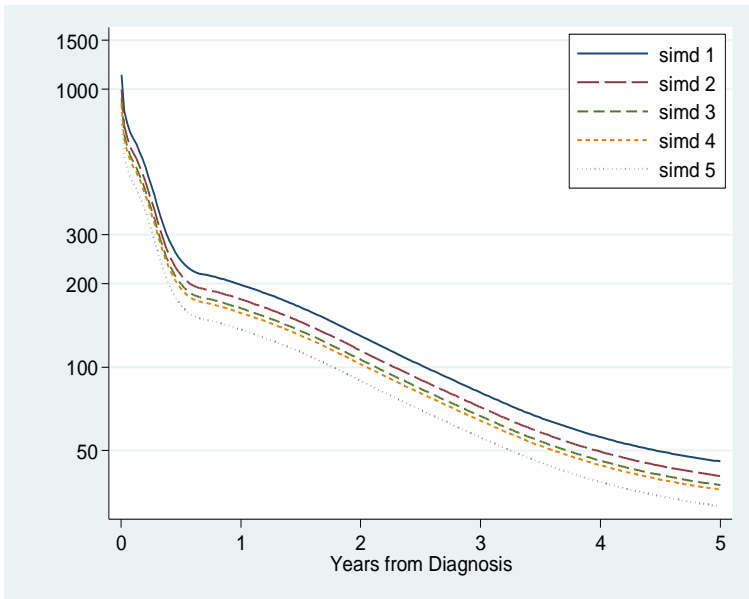
Figure D15: Excess Mortality from breast cancer by deprivation (incorporating all previously mentioned variables in the model)



	Hazard Ratio	95% CI	
		LCI	UCI
<b>SIMD (2009)</b>			
1 (Most deprived)	1.35	1.18	1.53
2	1.28	1.11	1.44
3	1.25	1.08	1.42
4	1.16	1.00	1.31
5 (Least deprived)	1.00		

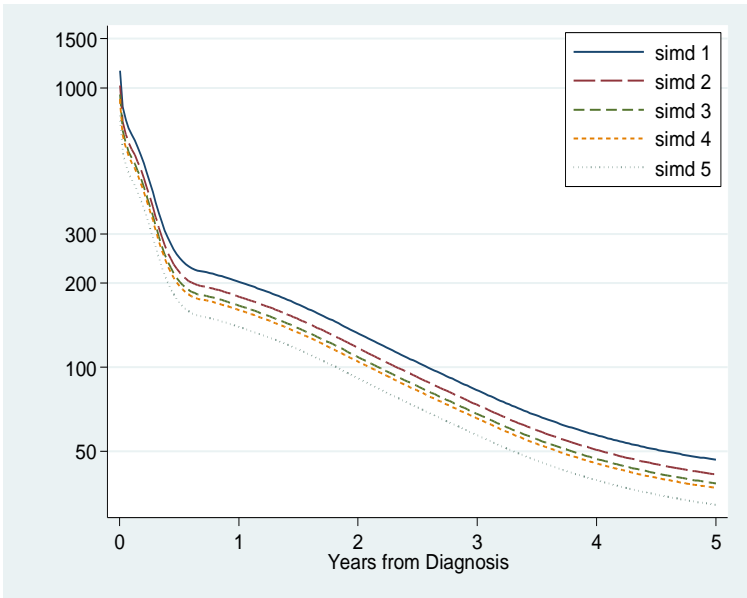
Figure D16: Excess Mortality from breast cancer by deprivation (incorporating all previously mentioned variables in the model except treatments)

Colorectal Cancer



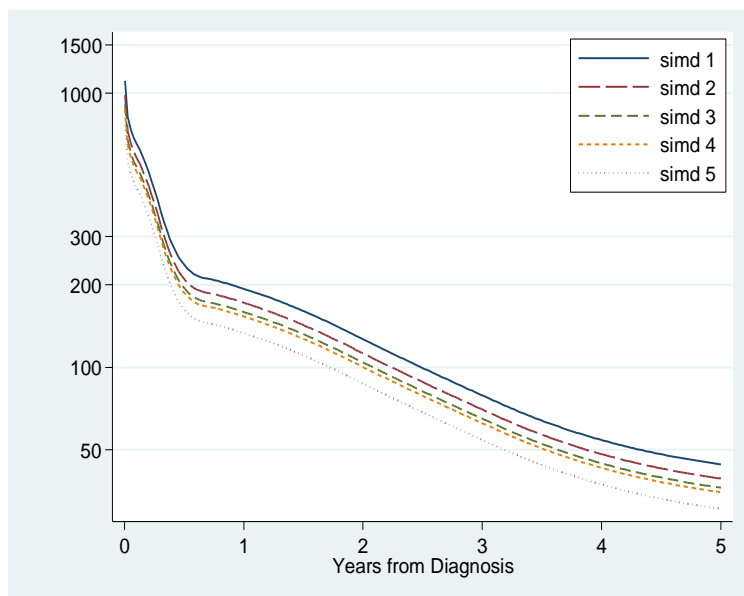
Unadjusted HR	95% CI	
	LCI	UCI
<b>SIMD (2009)</b>		
1 (Most deprived)	1.45	1.33 1.57
2	1.29	1.18 1.39
3	1.19	1.10 1.29
4	1.15	1.05 1.25
5 (Least deprived)	1.00	

Figure D17: Excess Mortality from colorectal cancer by deprivation.



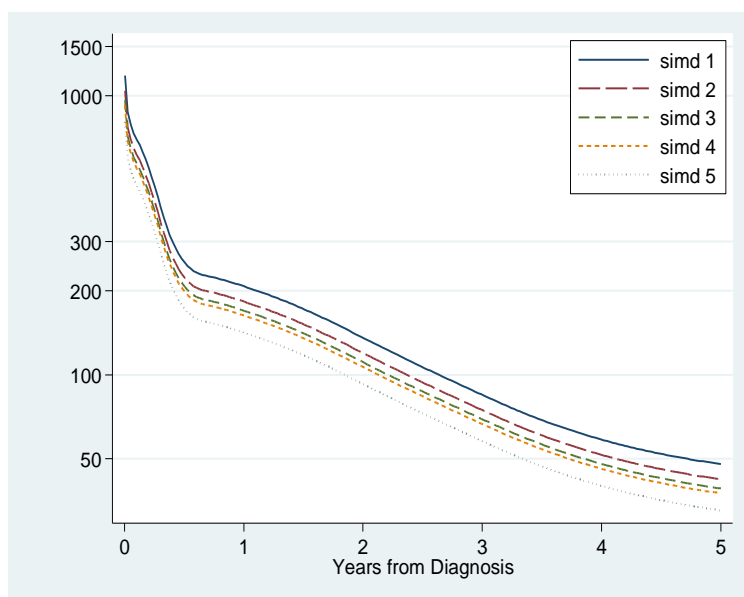
	Hazard Ratio	95% CI	
		LCI	UCI
SIMD (2009)			
1 (Most deprived)	1.45	1.33	1.57
2	1.28	1.18	1.39
3	1.19	1.09	1.29
4	1.15	1.05	1.25
5 (Least deprived)	1.00		

. Figure D18: Excess Mortality from colorectal cancer by deprivation (incorporating sex)



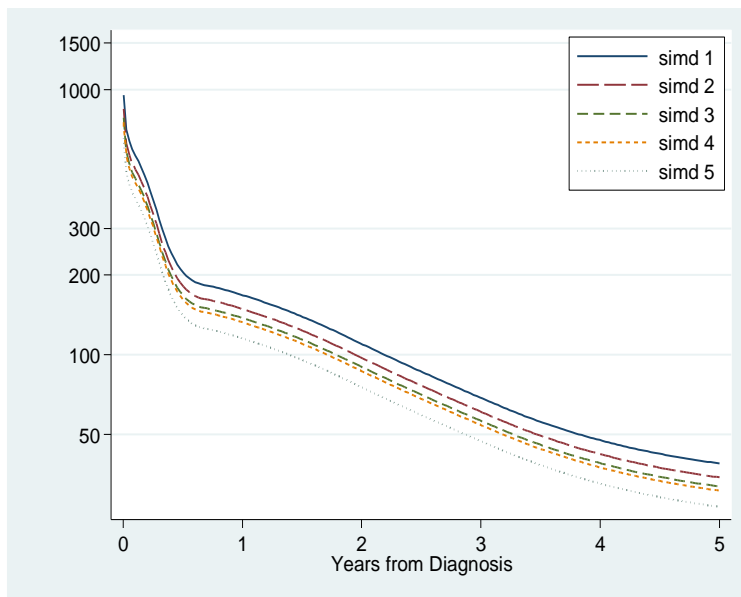
	Hazard Ratio	95% CI	
		LCI	UCI
SIMD (2009)			
1 (Most deprived)	1.45	1.34	1.57
2	1.29	1.19	1.39
3	1.19	1.10	1.29
4	1.15	1.05	1.25
5 (Least deprived)	1.00		

Figure D19: Excess Mortality from colorectal cancer by deprivation (incorporating age)



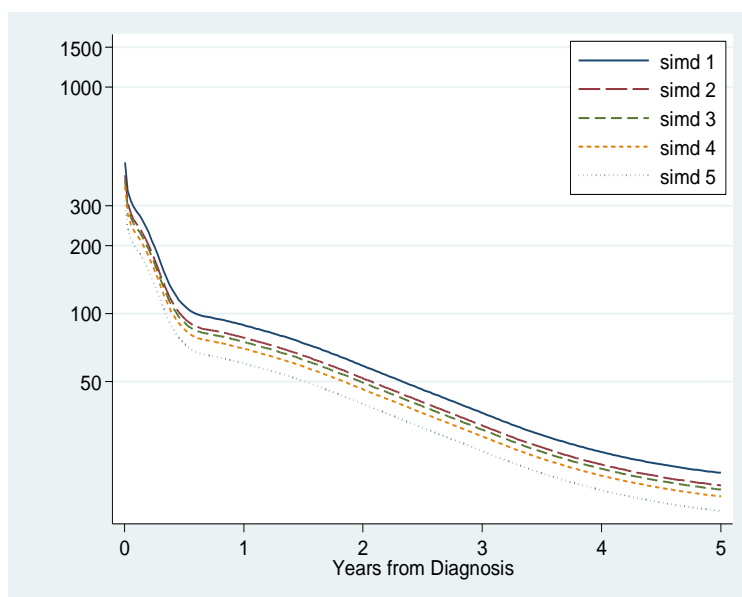
	Hazard Ratio	95% CI	
		LCI	UCI
SIMD (2009)			
1 (Most deprived)	1.47	1.35	1.58
2	1.29	1.19	1.40
3	1.20	1.10	1.30
4	1.15	1.05	1.25
5 (Least deprived)	1.00		

Figure D20: Excess Mortality from colorectal cancer by deprivation (incorporating Charlson index of co-morbidity)



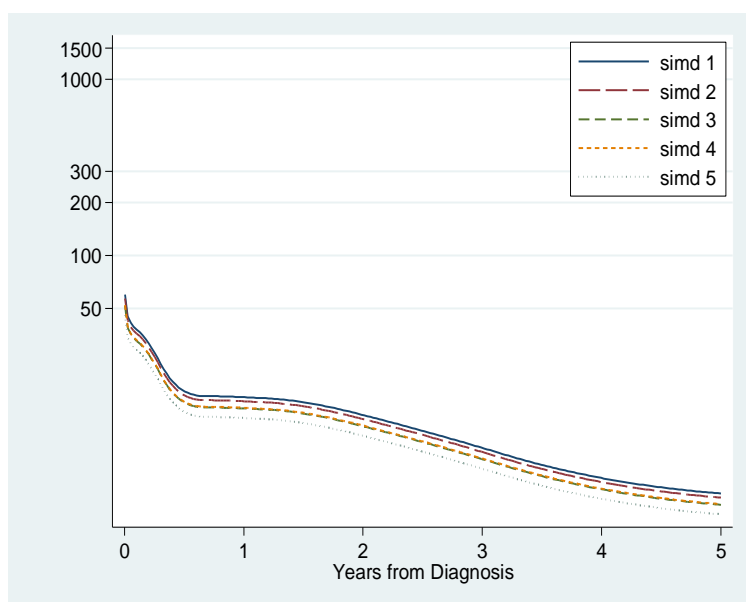
	Hazard Ratio	95% CI	
		LCI	UCI
SIMD (2009)			
1 (Most deprived)	1.46	1.34	1.57
2	1.29	1.19	1.39
3	1.19	1.10	1.29
4	1.15	1.05	1.25
5 (Least deprived)	1.00		

Figure D21: Excess Mortality from colorectal cancer by deprivation (incorporating inpatient bed days)



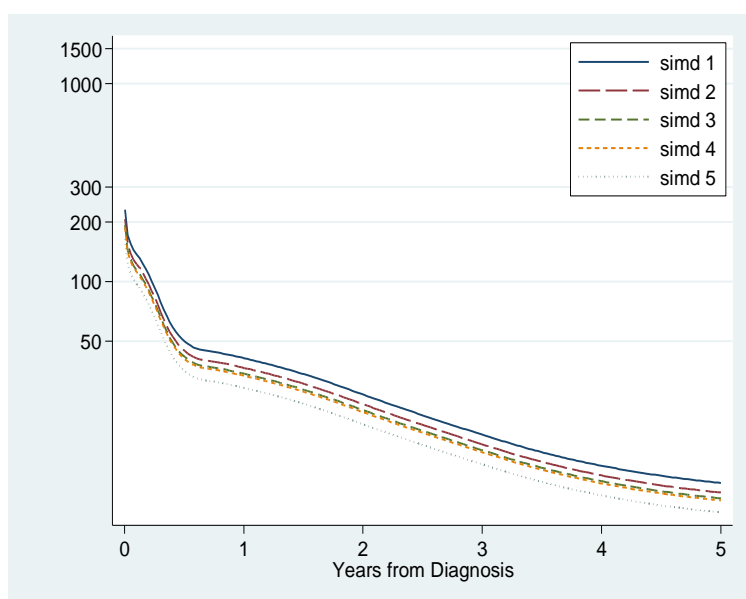
	Hazard Ratio	95% CI	
		LCI	UCI
SIMD (2009)			
1 (Most deprived)	1.47	1.36	1.59
2	1.30	1.19	1.40
3	1.24	1.14	1.34
4	1.16	1.06	1.26
5 (Least deprived)	1.00		

Figure D22: Excess Mortality from colorectal cancer by deprivation (incorporating grade of differentiation)



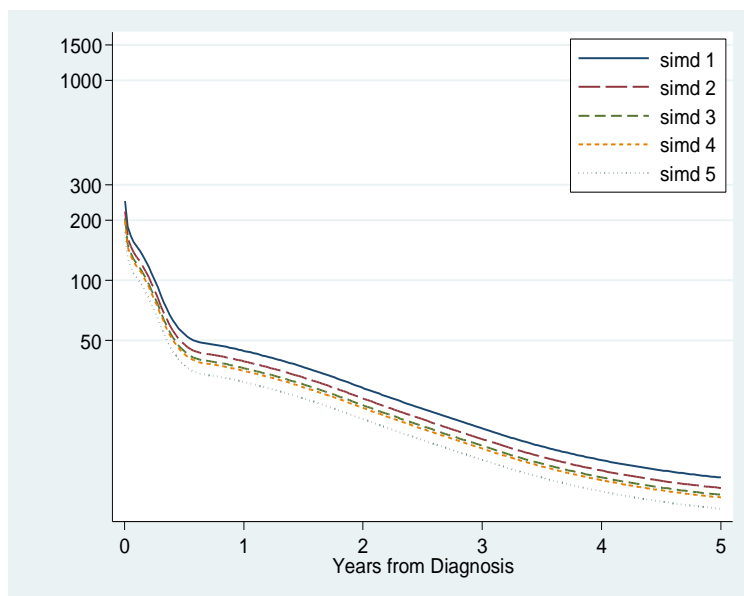
	Hazard Ratio	95% CI	
		LCI	UCI
SIMD (2009)			
1 (Most deprived)	1.31	1.21	1.42
2	1.24	1.15	1.34
3	1.13	1.04	1.22
4	1.14	1.05	1.24
5 (Least deprived)	1.00		

Figure D23: Excess Mortality from colorectal cancer by deprivation (incorporating Dukes' stage)



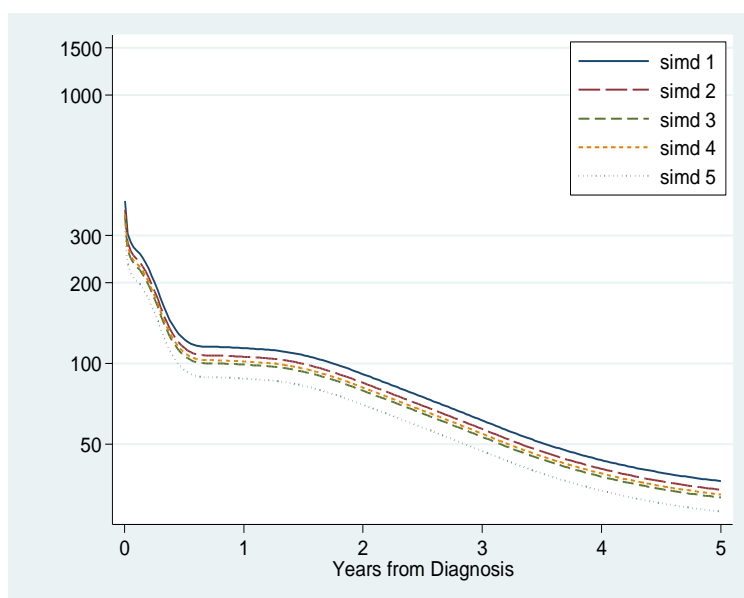
	Hazard Ratio	95% CI	
		LCI	UCI
SIMD (2009)			
1 (Most deprived)	1.41	1.30	1.53
2	1.26	1.16	1.36
3	1.18	1.08	1.28
4	1.15	1.05	1.25
5 (Least deprived)	1.00		

Figure D24: Excess Mortality from colorectal cancer by deprivation (incorporating screening)



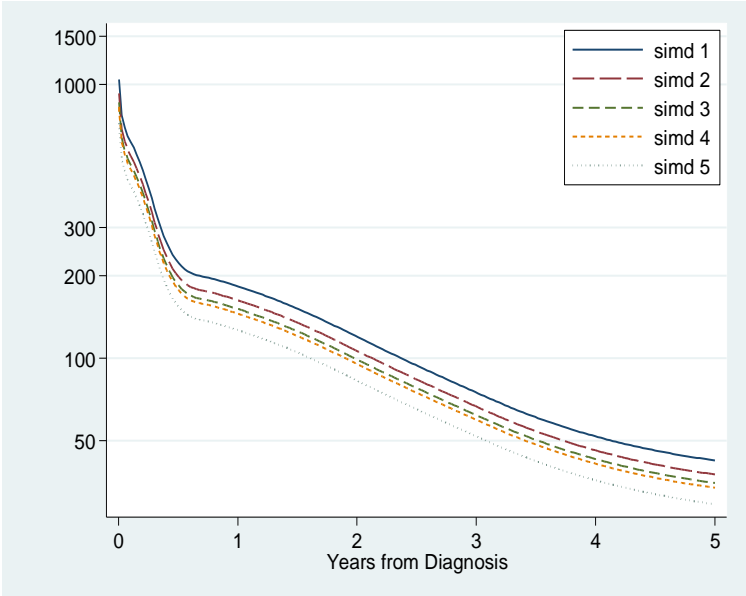
	Hazard Ratio	95% CI	
		LCI	UCI
SIMD (2009)			
1 (Most deprived)	1.43	1.32	1.55
2	1.27	1.17	1.37
3	1.18	1.08	1.27
4	1.14	1.04	1.23
5 (Least deprived)	1.00		

Figure D25: Excess Mortality from colorectal cancer by deprivation (incorporating morphology)



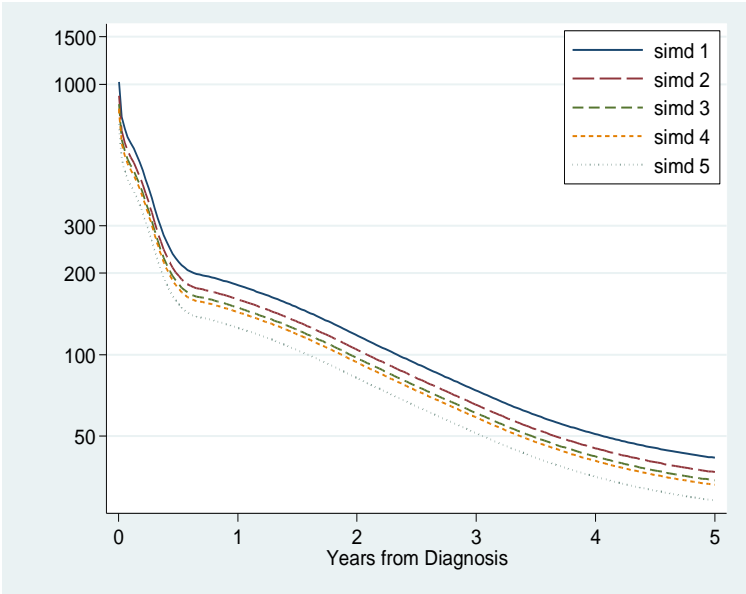
	Hazard Ratio	95% CI	
		LCI	UCI
SIMD (2009)			
1 (Most deprived)	1.30	1.20	1.40
2	1.21	1.11	1.30
3	1.13	1.04	1.22
4	1.16	1.06	1.25
5 (Least deprived)	1.00		

Figure D26: Excess Mortality from colorectal cancer by deprivation (incorporating surgery)



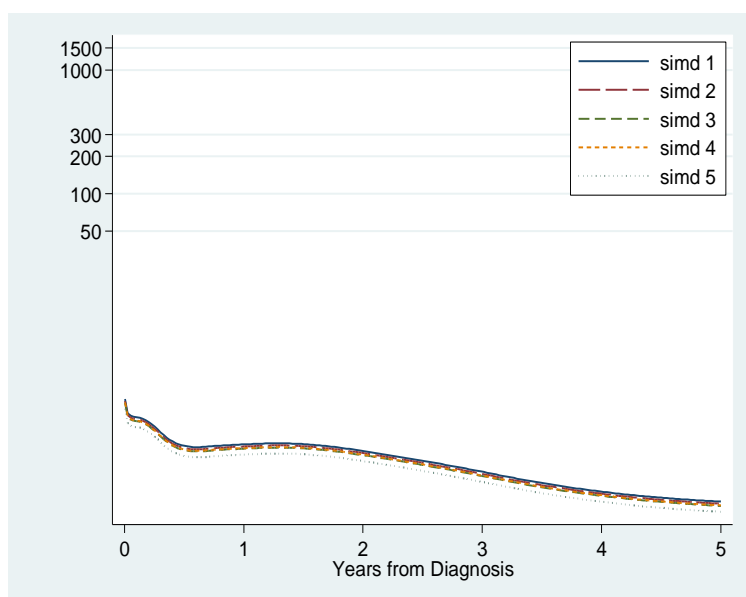
	Hazard Ratio	95% CI	
		LCI	UCI
SIMD (2009)			
1 (Most deprived)	1.45	1.33	1.56
2	1.29	1.18	1.39
3	1.20	1.10	1.29
4	1.15	1.05	1.25
5 (Least deprived)	1.00		

Figure D27: Excess Mortality from colorectal cancer by deprivation (incorporating radiotherapy)



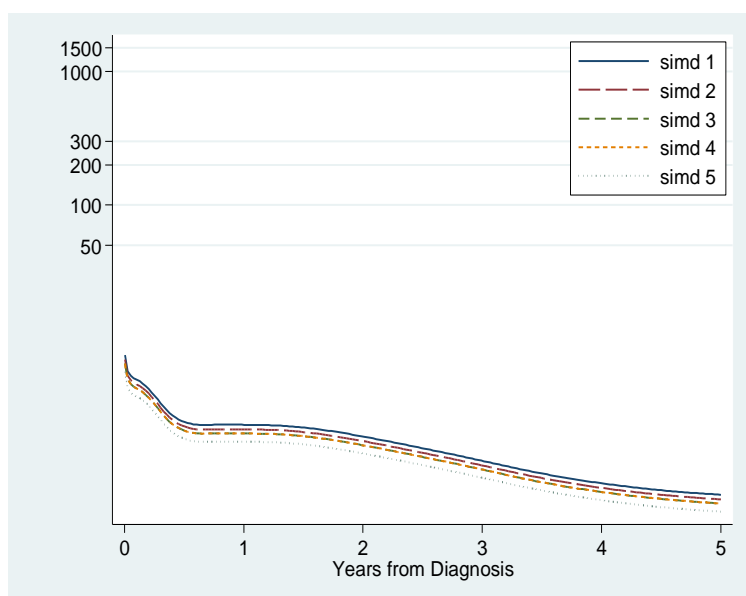
	Hazard Ratio	95% CI	
		LCI	UCI
SIMD (2009)			
1 (Most deprived)	1.44	1.32	1.55
2	1.27	1.17	1.38
3	1.19	1.09	1.28
4	1.14	1.05	1.24
5 (Least deprived)	1.00		

Figure D28: Excess Mortality from colorectal cancer by deprivation (incorporating chemotherapy)



	Hazard Ratio	95% CI	
		LCI	UCI
SIMD (2009)			
1 (Most deprived)	1.21	1.11	1.30
2	1.16	1.07	1.25
3	1.12	1.03	1.21
4	1.13	1.04	1.22
5 (Least deprived)	1.00		

Figure D29: Excess Mortality from colorectal cancer by deprivation (incorporating all previously mentioned variables)

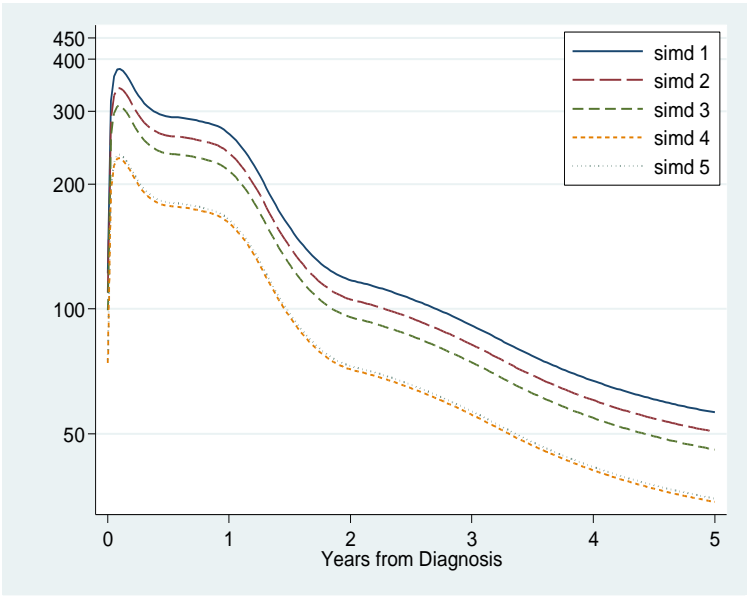


	Hazard Ratio	95% CI	
		LCI	UCI
SIMD (2009)			
1 (Most deprived)	1.34	1.23	1.44
2	1.24	1.14	1.33
3	1.15	1.06	1.24
4	1.15	1.06	1.25
5 (Least deprived)	1.00		

Figure D30: Excess Mortality from colorectal cancer by deprivation (incorporating all previously mentioned variables in the model, except treatment variables)

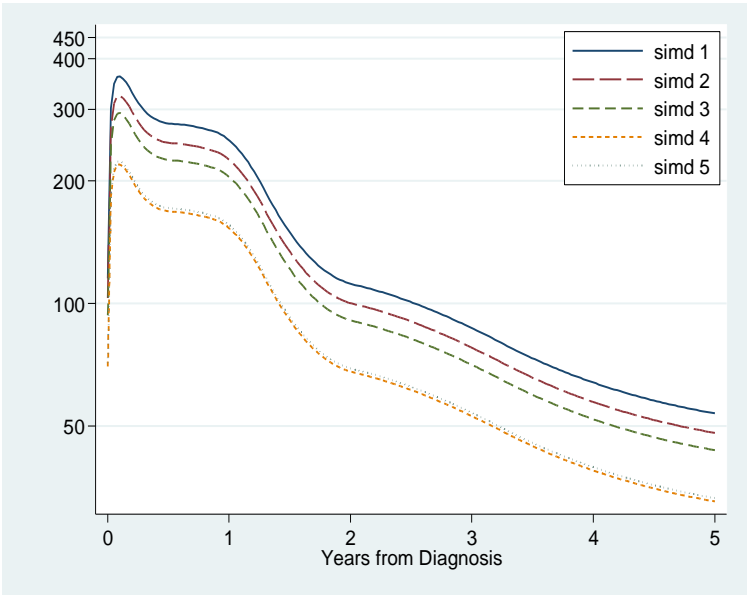


Head and Neck Cancer



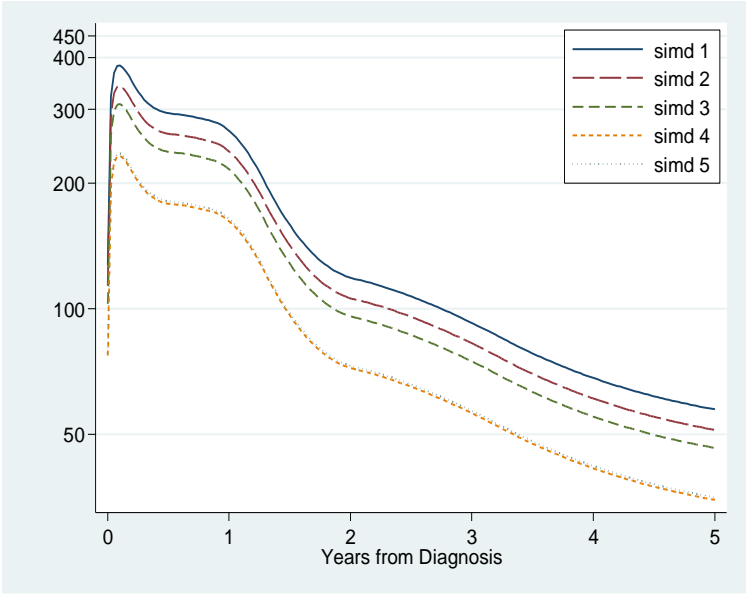
Unadjusted HR	95% CI	
	LCI	UCI
SIMD (2009)		
1 (Most deprived)	1.61	1.34 1.88
2	1.45	1.20 1.70
3	1.31	1.07 1.55
4	0.98	0.78 1.18
5 (Least deprived)	1.00	

Figure D31: Excess Mortality from head and neck cancer by deprivation.



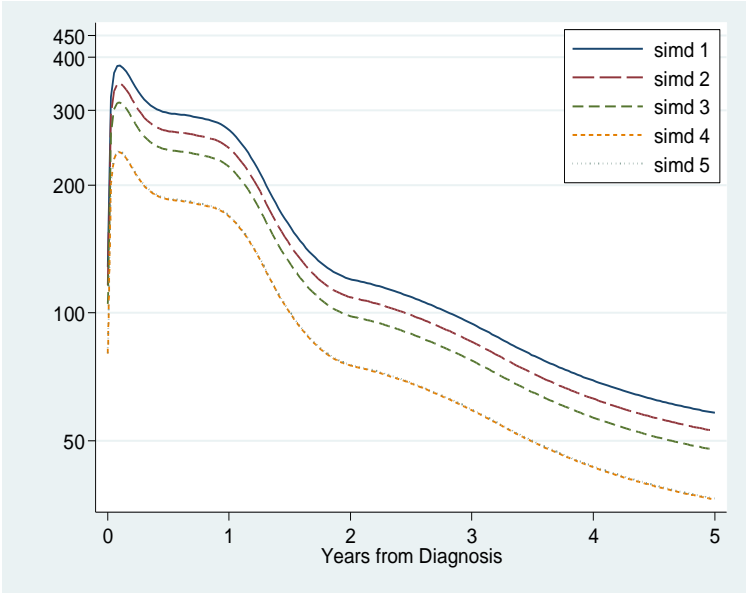
Hazard Ratio	95% CI	
	LCI	UCI
SIMD (2009)		
1 (Most deprived)	1.61	1.34 1.89
2	1.45	1.19 1.70
3	1.31	1.07 1.55
4	0.98	0.79 1.18
5 (Least deprived)	1.00	

. Figure D32: Excess Mortality from head and neck cancer by deprivation (incorporating sex)



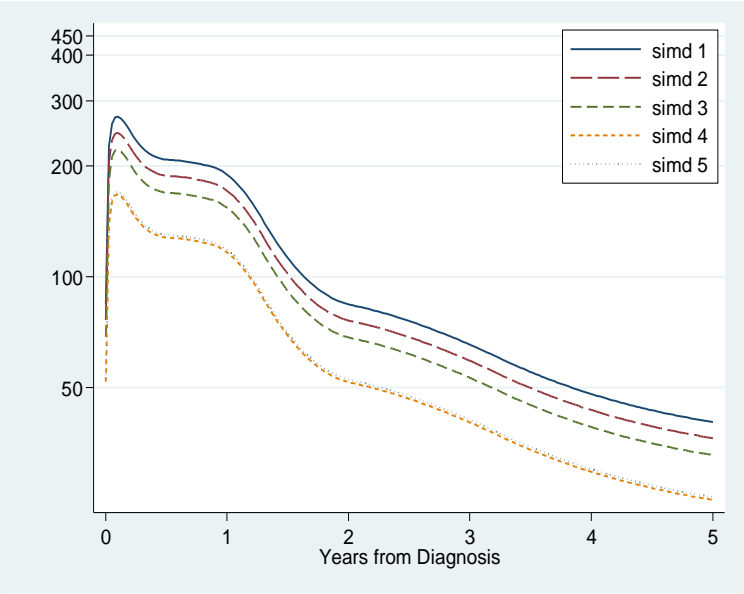
	Hazard Ratio	95% CI	
		LCI	UCI
SIMD (2009)			
1 (Most deprived)	1.63	1.35	1.90
2	1.45	1.20	1.70
3	1.31	1.07	1.55
4	0.99	0.79	1.18
5 (Least deprived)	1.00		

Figure D33: Excess Mortality from head and neck cancer by deprivation (incorporating age)



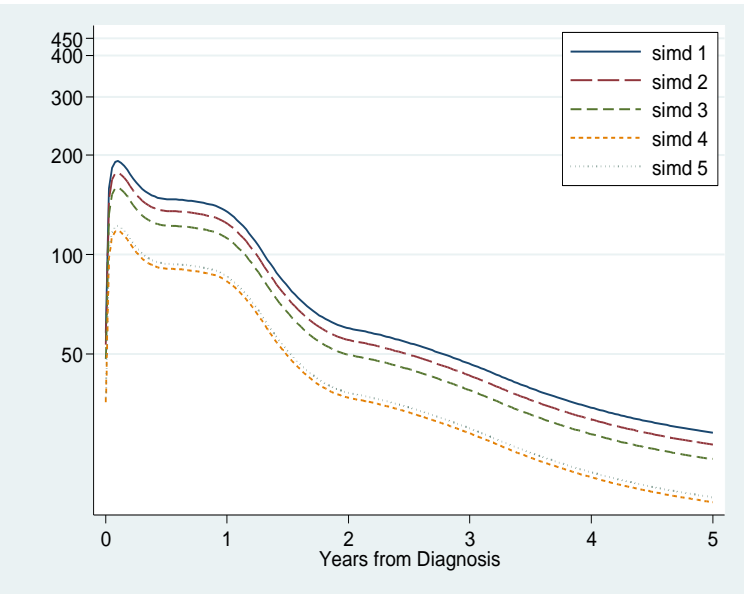
	Hazard Ratio	95% CI	
		LCI	UCI
<b>SIMD (2009)</b>			
1 (Most deprived	1.59	1.32	1.86
2	1.44	1.19	1.69
3	1.30	1.06	1.54
4	0.99	0.80	1.19
5 (Least deprivec	1.00		

Figure D34: Excess Mortality from head and neck cancer by deprivation (incorporating Charlson Index of co-morbidity)



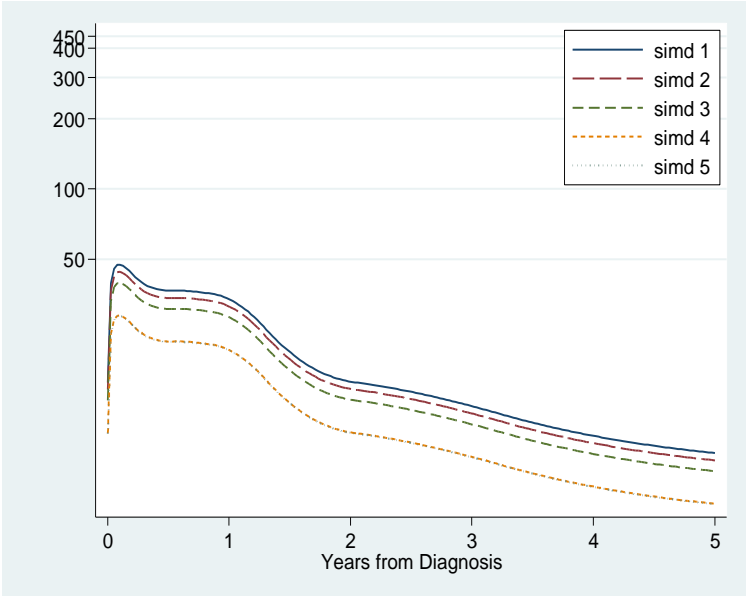
	Hazard Ratio	95% CI	
		LCI	UCI
SIMD (2009)			
1 (Most deprived)	1.60	1.33	1.87
2	1.45	1.19	1.70
3	1.30	1.06	1.54
4	0.98	0.79	1.18
5 (Least deprived)	1.00		

Figure D35: Excess Mortality from head and neck cancer by deprivation (incorporating inpatient bed days)



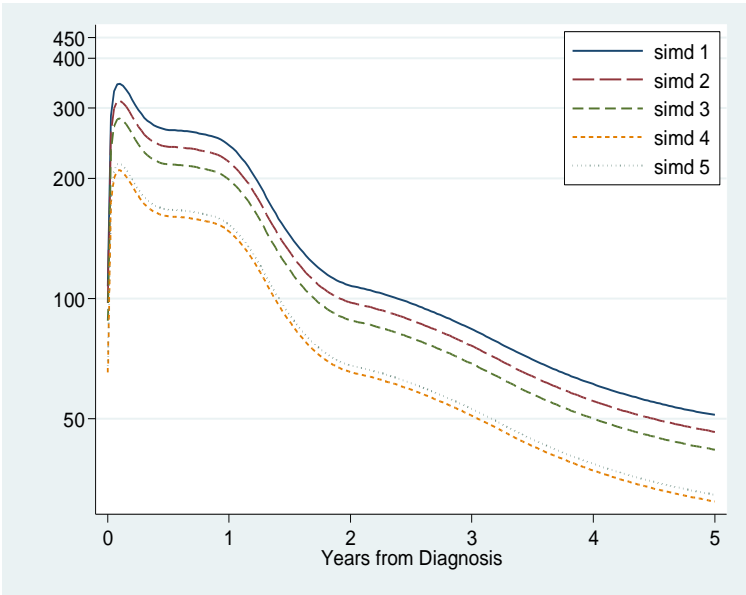
	Hazard Ratio	95% CI	
		LCI	UCI
SIMD (2009)			
1 (Most deprived)	1.57	1.30	1.83
2	1.44	1.19	1.70
3	1.30	1.07	1.54
4	0.97	0.77	1.16
5 (Least deprived)	1.00		

Figure D36: Excess Mortality from head and neck cancer by deprivation (incorporating grade of differentiation)



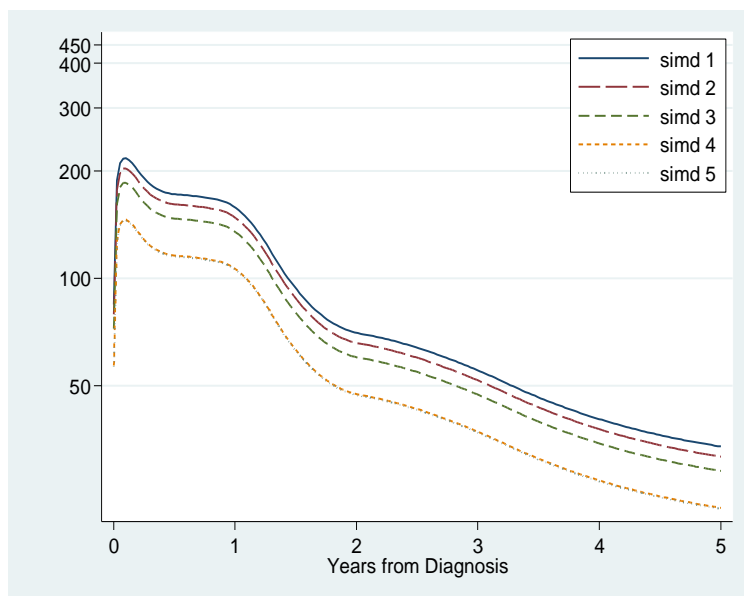
	Hazard Ratio	95% CI	
		LCI	UCI
SIMD (2009)			
1 (Most deprived)	1.66	1.38	1.94
2	1.54	1.27	1.82
3	1.39	1.13	1.64
4	1.00	0.80	1.21
5 (Least deprived)	1.00		

Figure D37: Excess Mortality from head and neck cancer by deprivation (incorporating site)



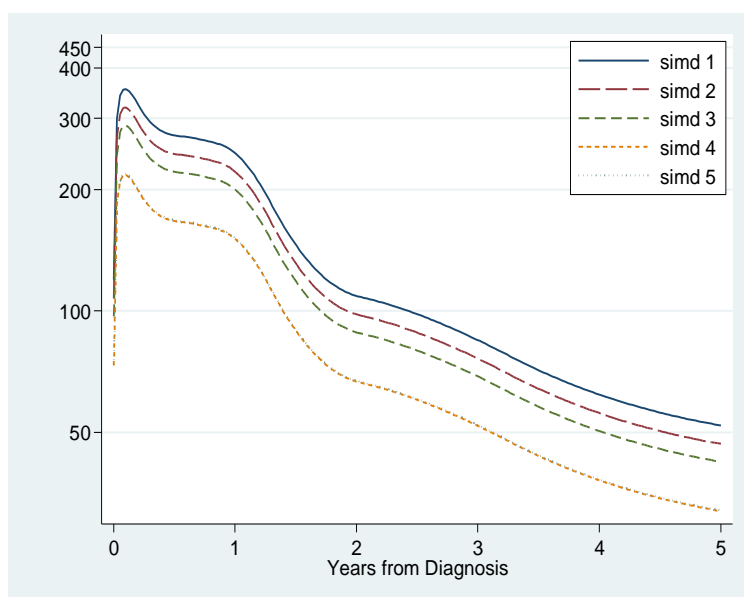
	Hazard Ratio	95% CI	
		LCI	UCI
SIMD (2009)			
1 (Most deprived)	1.58	1.32	1.85
2	1.44	1.19	1.69
3	1.30	1.06	1.54
4	0.96	0.77	1.16
5 (Least deprived)	1.00		

Figure D38: Excess Mortality from head and neck cancer by deprivation (incorporating metastases within 4 months)



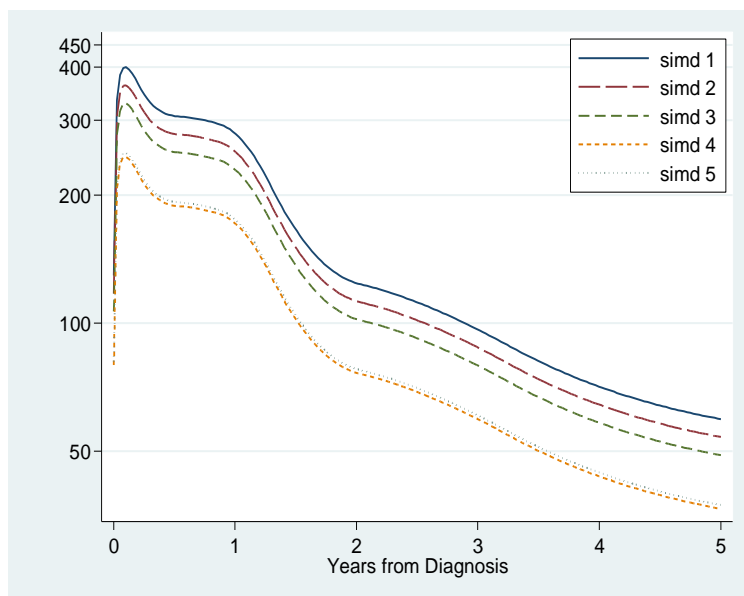
	Hazard Ratio	95% CI	
		LCI	UCI
SIMD (2009)			
1 (Most deprived)	1.49	1.25	1.74
2	1.40	1.16	1.64
3	1.28	1.04	1.51
4	1.01	0.81	1.21
5 (Least deprived)	1.00		

Figure D39: Excess Mortality from head and neck cancer by deprivation (incorporating surgery)



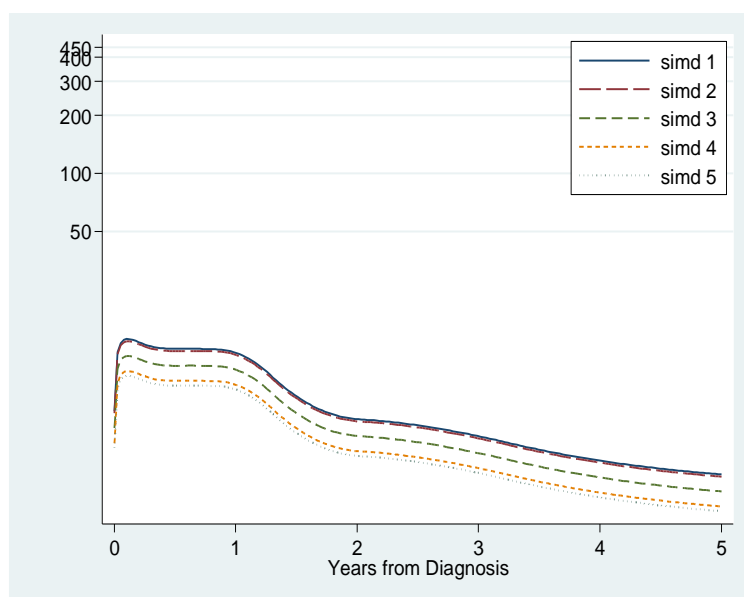
	Hazard Ratio	95% CI	
		LCI	UCI
SIMD (2009)			
1 (Most deprived)	1.62	1.35	1.90
2	1.46	1.21	1.72
3	1.32	1.08	1.56
4	0.99	0.80	1.19
5 (Least deprived)	1.00		

Figure D40: Excess Mortality from head and neck cancer by deprivation (incorporating radiography)



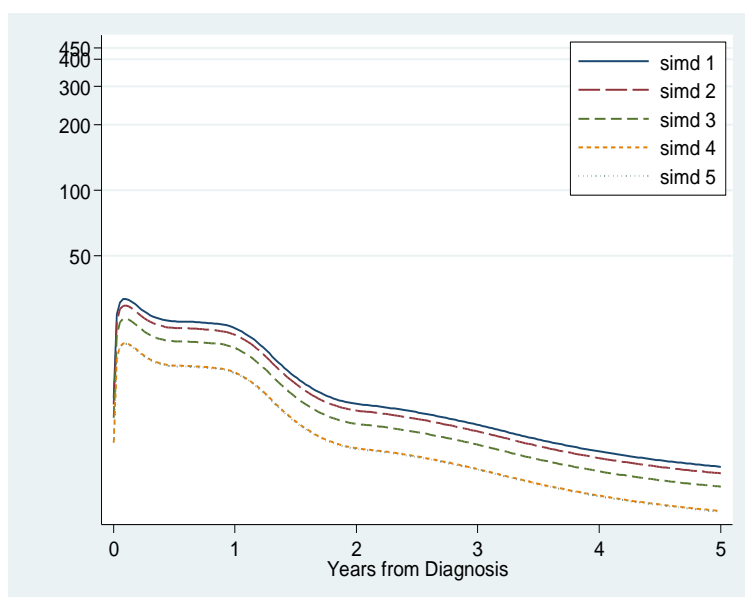
	Hazard Ratio	95% CI	
		LCI	UCI
SIMD (2009)			
1 (Most deprived)	1.59	1.32	1.86
2	1.44	1.19	1.70
3	1.31	1.07	1.55
4	0.98	0.78	1.18
5 (Least deprived)	1.00		

Figure D41: Excess Mortality from head and neck cancer by deprivation (incorporating chemotherapy)



	Hazard Ratio	95% CI	
		LCI	UCI
SIMD (2009)			
1 (Most deprived)	1.55	1.29	1.81
2	1.51	1.25	1.78
3	1.27	1.04	1.50
4	1.06	0.85	1.27
5 (Least deprived)	1.00		

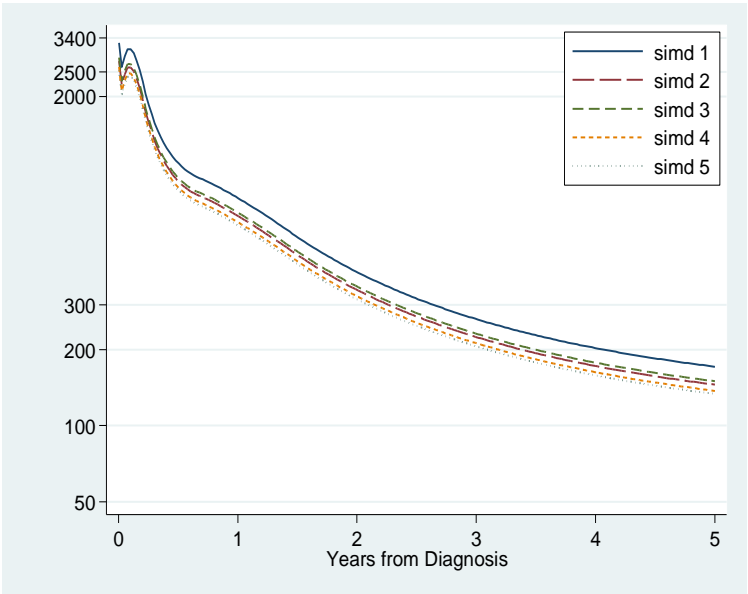
Figure D42: Excess Mortality from head and neck cancer by deprivation (incorporating all previously mentioned variables)



	Hazard Ratio	95% CI	
		LCI	UCI
SIMD (2009)			
1 (Most deprived)	1.61	1.34	1.88
2	1.50	1.24	1.76
3	1.30	1.07	1.54
4	1.01	0.81	1.21
5 (Least deprived)	1.00		

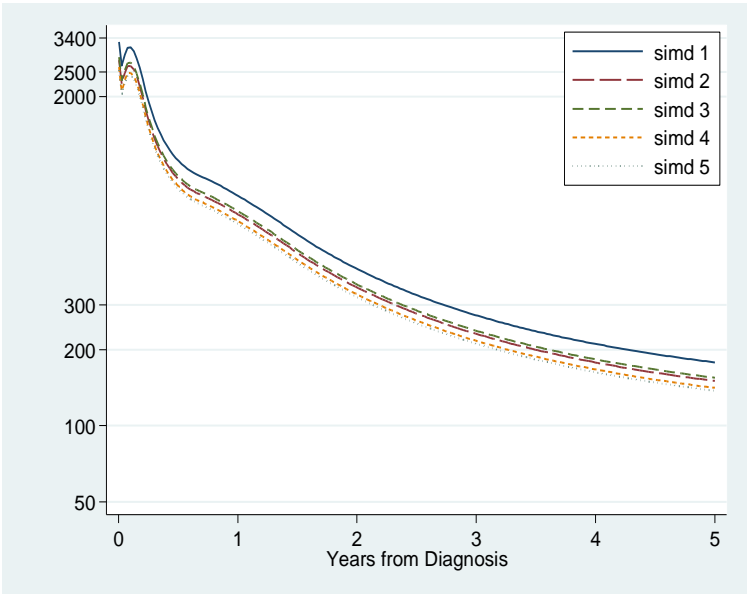
*Figure D43: Excess Mortality from head and neck cancer by deprivation (incorporating all previously mentioned variables in the model, except treatment variables)*

Liver Cancer



Unadjusted HR	95% CI	
	LCI	UCI
<b>SIMD (2009)</b>		
1 (Most deprived)	1.28	1.06 1.50
2	1.09	0.90 1.28
3	1.12	0.92 1.33
4	1.03	0.84 1.22
5 (Least deprived)	1.00	

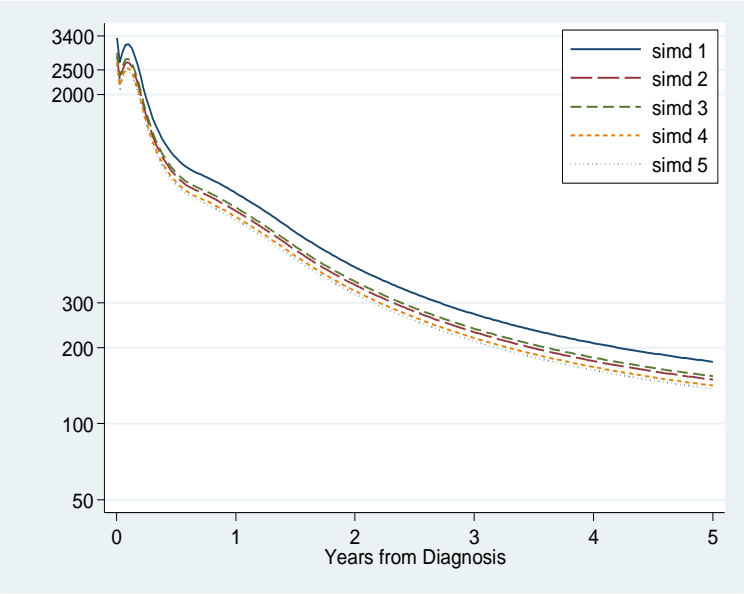
Figure D44: Excess Mortality from Liver cancer by deprivation.



	Hazard Ratio	95% CI		
		LCI	UCI	
SIMD (2009)				
1 (Most deprived)	1.28	1.06	1.50	
2	1.09	0.90	1.28	
3	1.12	0.92	1.32	
4	1.03	0.84	1.22	
5 (Least deprived)	1.00			

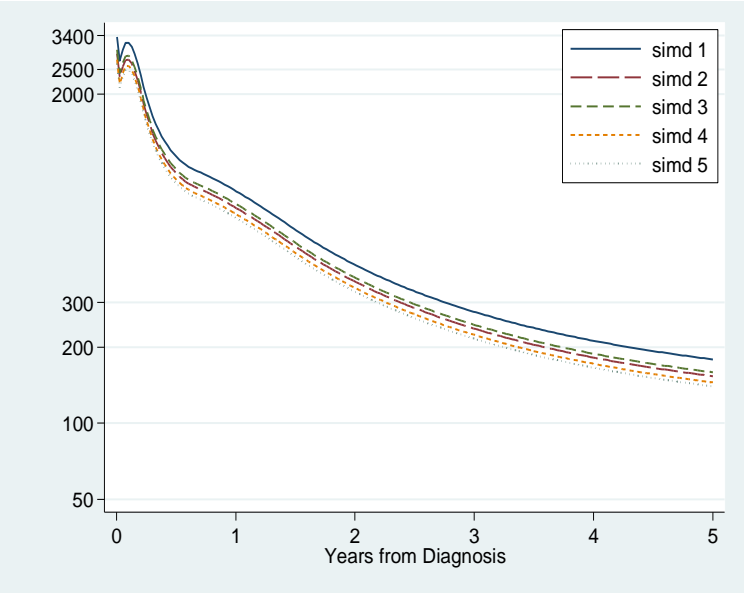
Figure D45: Excess Mortality from Liver cancer by deprivation (incorporating age)





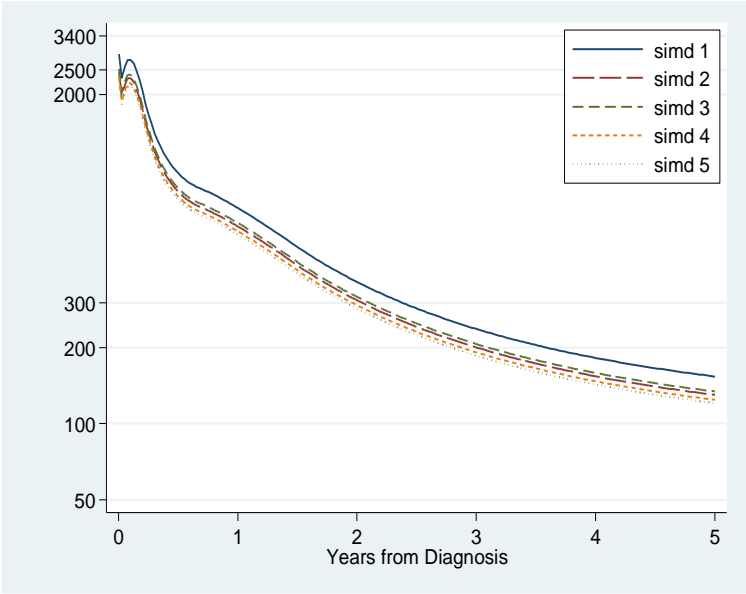
	Hazard Ratio	95% CI	
		LCI	UCI
SIMD (2009)			
1 (Most deprived)	1.28	1.06	1.50
2	1.09	0.90	1.28
3	1.12	0.92	1.32
4	1.03	0.84	1.22
5 (Least deprived)	1.00		

Figure D46: Excess Mortality from Liver cancer by deprivation (incorporating sex)



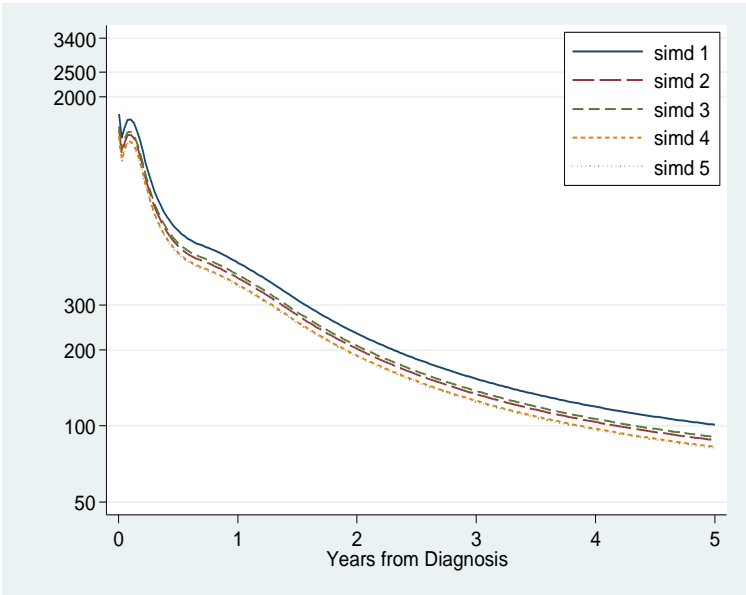
	Hazard Ratio	95% CI	
		LCI	UCI
SIMD (2009)			
1 (Most deprived)	1.28	1.06	1.49
2	1.10	0.91	1.29
3	1.14	0.93	1.34
4	1.04	0.84	1.23
5 (Least deprived)	1.00		

Figure D47: Excess Mortality from Liver cancer by deprivation (incorporating Charlson Index of co-morbidity)



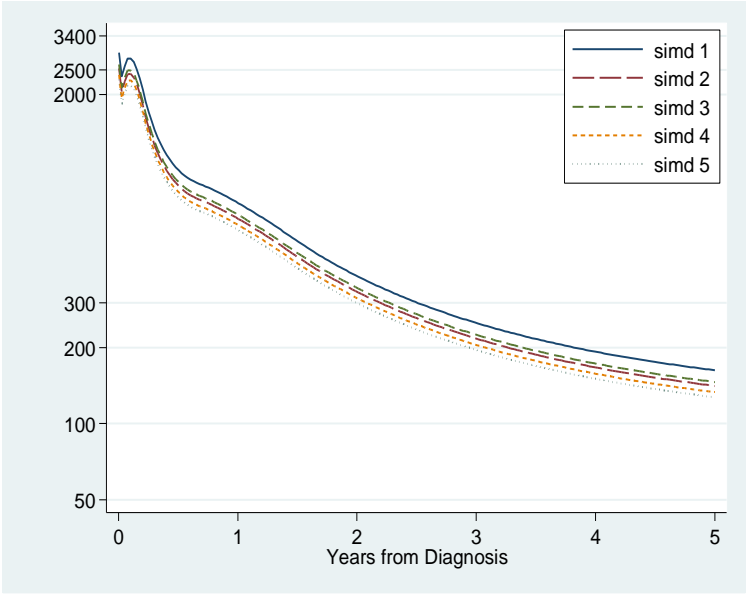
	Hazard Ratio	95% CI	
		LCI	UCI
SIMD (2009)			
1 (Most deprived)	1.27	1.06	1.49
2	1.08	0.89	1.27
3	1.11	0.91	1.31
4	1.03	0.84	1.22
5 (Least deprived)	1.00		

Figure D48: Excess Mortality from Liver cancer by deprivation (incorporating inpatient bed days)



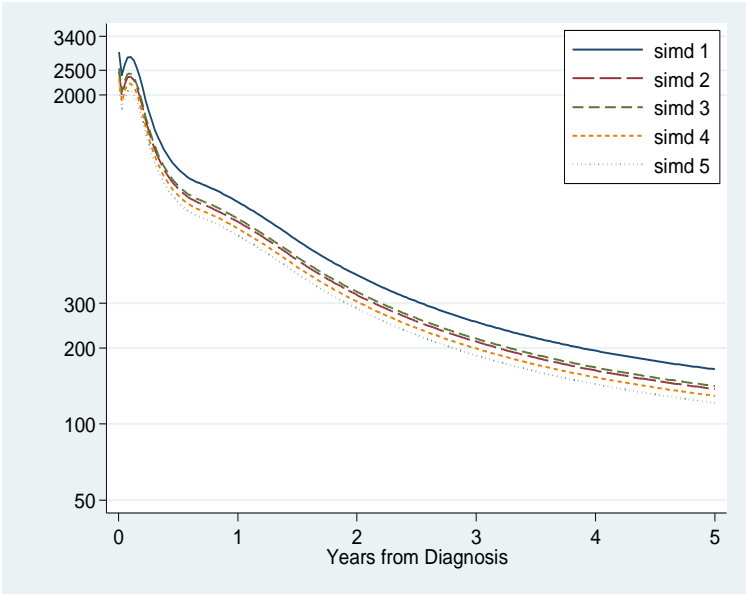
	Hazard Ratio	95% CI	
		LCI	UCI
SIMD (2009)			
1 (Most deprived)	1.24	1.03	1.44
2	1.07	0.89	1.26
3	1.11	0.91	1.30
4	1.01	0.82	1.20
5 (Least deprived)	1.00		

Figure D49: Excess Mortality from Liver cancer by deprivation (incorporating Grade of differentiation)



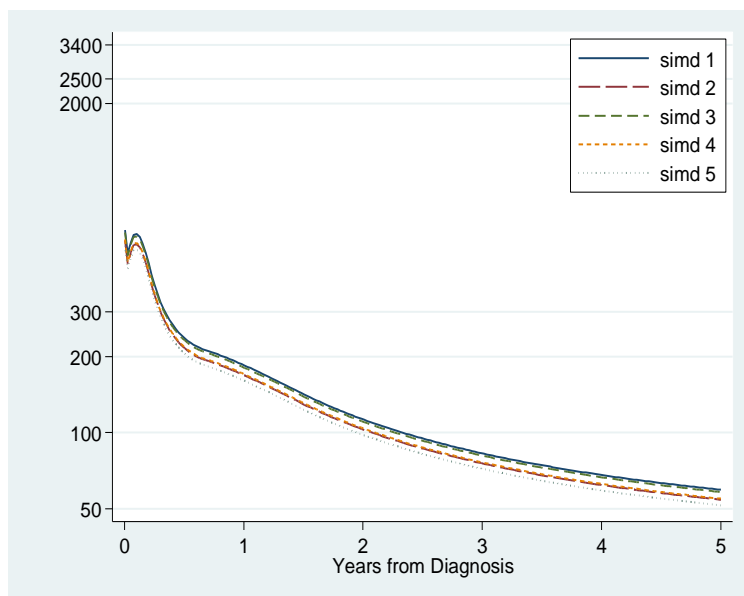
	Hazard Ratio	95% CI	
		LCI	UCI
SIMD (2009)			
1 (Most deprived)	1.28	1.06	1.50
2	1.11	0.92	1.30
3	1.15	0.94	1.36
4	1.05	0.85	1.24
5 (Least deprived)	1.00		

Figure D50: Excess Mortality from Liver cancer by deprivation (incorporating metastases within 4 months (Y/No record))



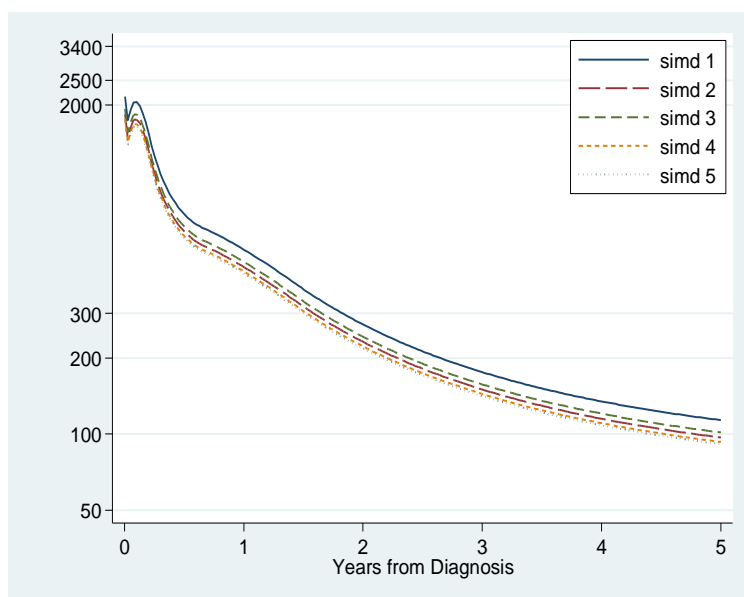
	Hazard Ratio	95% CI	
		LCI	UCI
SIMD (2009)			
1 (Most deprived)	1.36	1.13	1.59
2	1.13	0.93	1.33
3	1.17	0.95	1.38
4	1.06	0.87	1.26
5 (Least deprived)	1.00		

Figure D51: Excess Mortality from Liver cancer by deprivation (incorporating tumour histology)



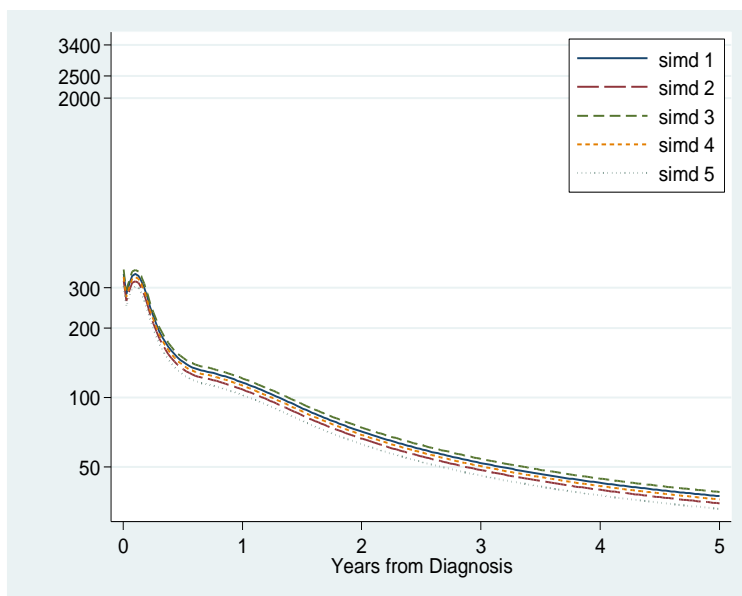
	Hazard Ratio	95% CI	
		LCI	UCI
SIMD (2009)			
1 (Most deprived)	1.15	0.96	1.35
2	1.05	0.87	1.23
3	1.13	0.92	1.33
4	1.06	0.86	1.26
5 (Least deprived)	1.00		

Figure D52: Excess Mortality from Liver cancer by deprivation (incorporating surgery)



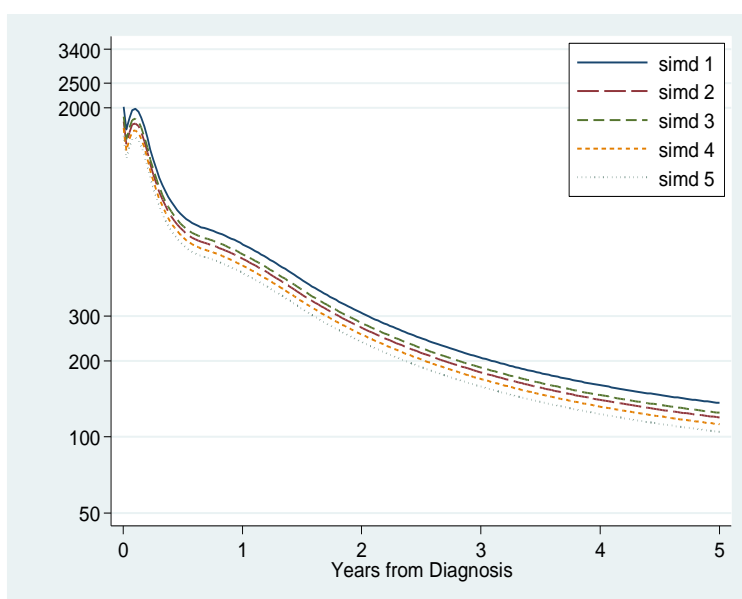
	Hazard Ratio	95% CI	
		LCI	UCI
SIMD (2009)			
1 (Most deprived)	1.24	1.03	1.45
2	1.06	0.88	1.25
3	1.11	0.91	1.31
4	1.02	0.83	1.21
5 (Least deprived)	1.00		

Figure D53: Excess Mortality from Liver cancer by deprivation (incorporating chemotherapy)



	Hazard Ratio	95% CI	
		LCI	UCI
SIMD (2009)			
1 (Most deprived)	1.13	0.94	1.33
2	1.06	0.87	1.24
3	1.18	0.97	1.40
4	1.10	0.89	1.30
5 (Least deprived)	1.00		

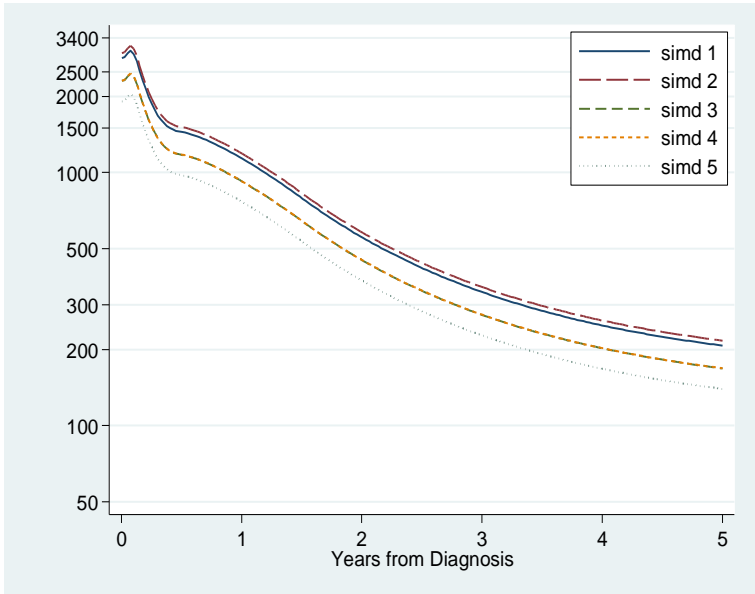
Figure D54: Excess Mortality from Liver cancer by deprivation (incorporating all previously mentioned variables in the model)



	Hazard Ratio	95% CI	
		LCI	UCI
SIMD (2009)			
1 (Most deprived)	1.30	1.08	1.52
2	1.14	0.94	1.34
3	1.19	0.97	1.40
4	1.07	0.87	1.27
5 (Least deprived)	1.00		

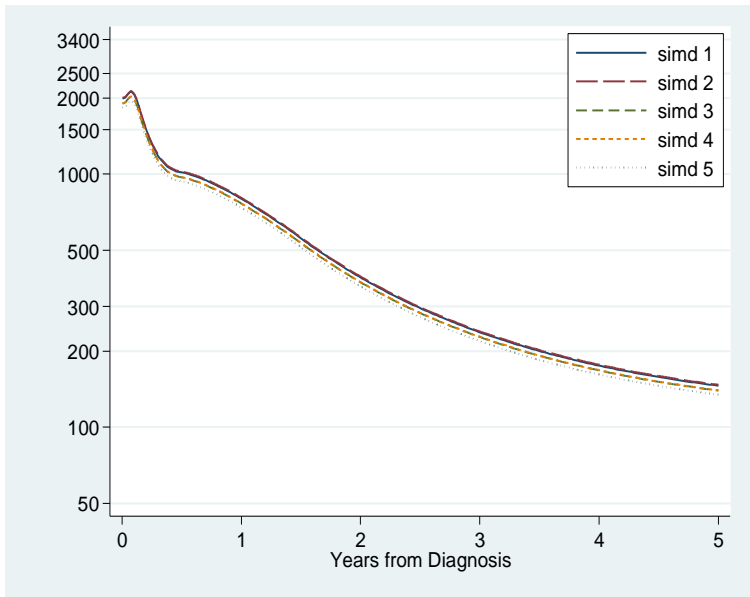
Figure D55: Excess Mortality from Liver cancer by deprivation (incorporating all previously mentioned variables in the model, except treatment variables)

Lung Cancer



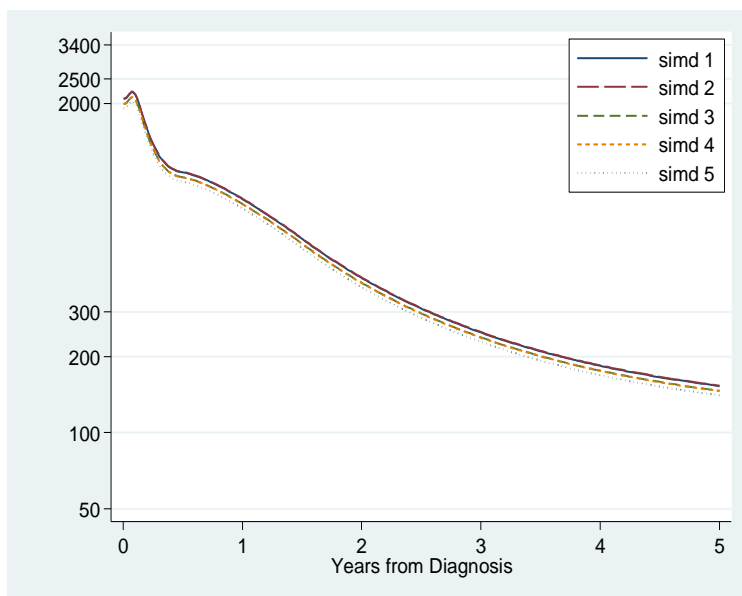
Unadjusted HR	95% CI	
	LCI	UCI
SIMD (2009)		
1 (Most deprived)	1.08	1.03 1.13
2	1.09	1.04 1.15
3	1.04	0.98 1.09
4	1.04	0.98 1.10
5 (Least deprived)	1.00	

Figure D56: Excess Mortality from lung cancer by deprivation.



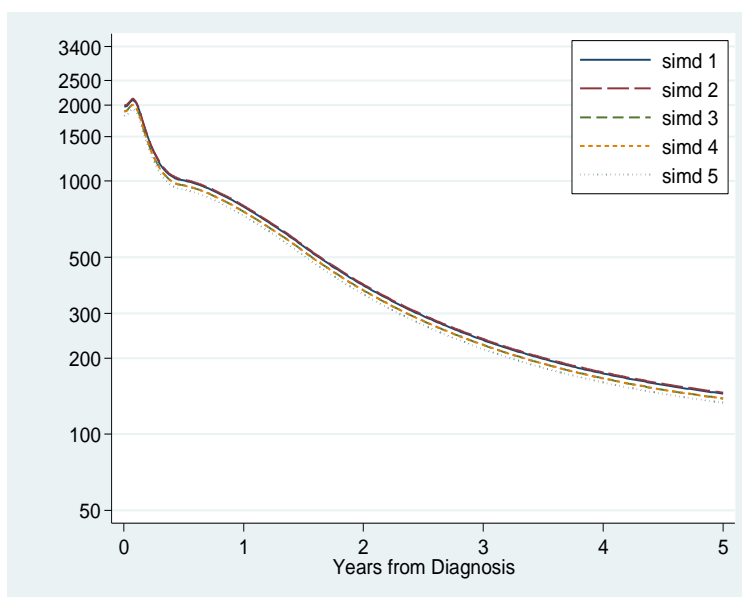
	Hazard Ratio	95% CI	
		LCI	UCI
SIMD (2009)			
1 (Most deprived)	1.08	1.03	1.14
2	1.09	1.04	1.15
3	1.04	0.98	1.09
4	1.04	0.98	1.10
5 (Least deprived)	1.00		

Figure D57: Excess Mortality from lung cancer by deprivation (incorporating sex)



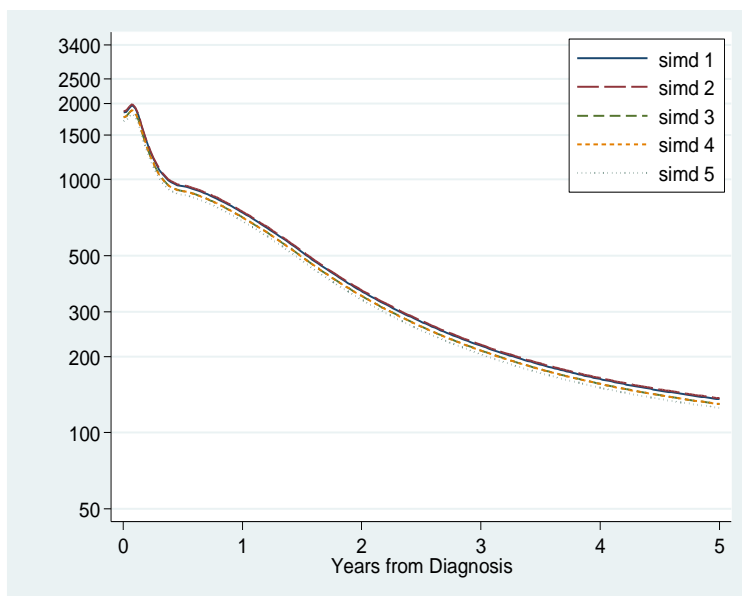
	Hazard Ratio	95% CI	
		LCI	UCI
SIMD (2009)			
1 (Most deprived)	1.09	1.04	1.14
2	1.09	1.04	1.15
3	1.04	0.99	1.10
4	1.04	0.98	1.10
5 (Least deprived)	1.00		

Figure D58: Excess Mortality from lung cancer by deprivation (incorporating age)



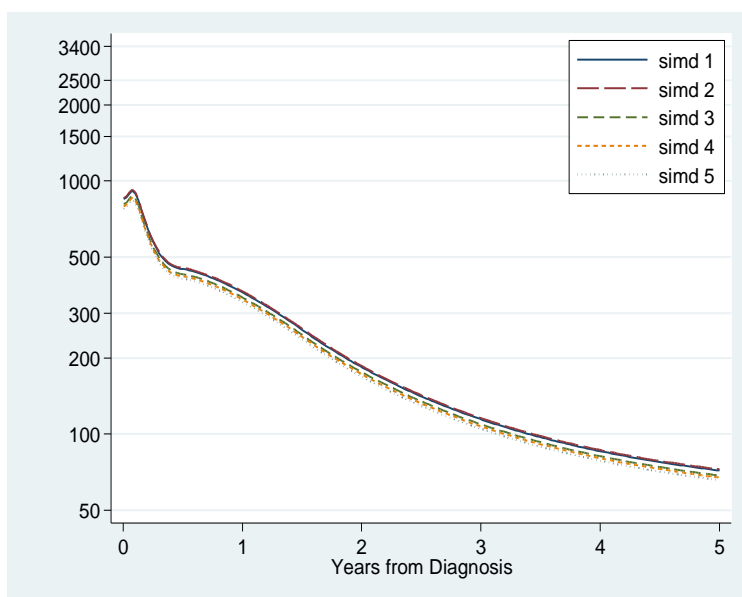
	Hazard Ratio	95% CI	
		LCI	UCI
SIMD (2009)			
1 (Most deprived)	1.09	1.03	1.14
2	1.10	1.04	1.15
3	1.04	0.98	1.09
4	1.04	0.98	1.10
5 (Least deprived)	1.00		

Figure D59: Excess Mortality from lung cancer by deprivation (incorporating Charlson Index)



	Hazard Ratio	95% CI	
		LCI	UCI
SIMD (2009)			
1 (Most deprived)	1.08	1.03	1.13
2	1.09	1.04	1.15
3	1.04	0.98	1.09
4	1.03	0.98	1.09
5 (Least deprived)	1.00		

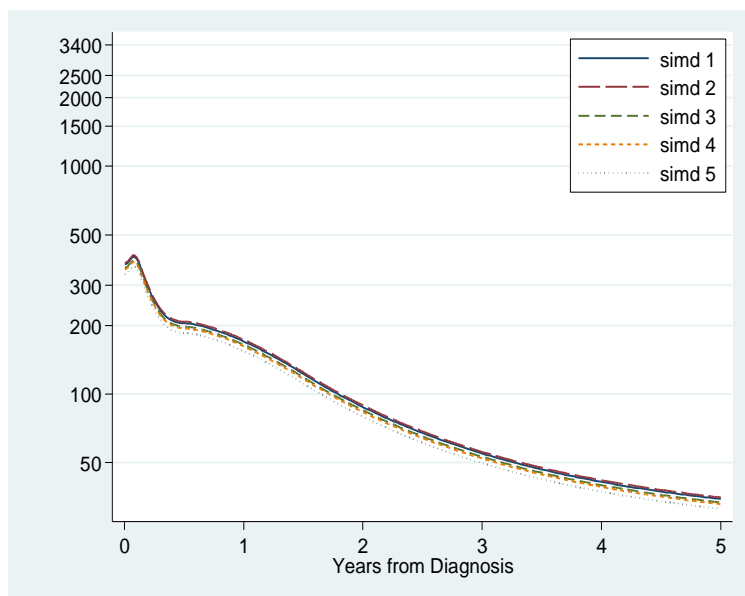
Figure D60: Excess Mortality from lung cancer by deprivation (incorporating beddays)



	Hazard Ratio	95% CI	
		LCI	UCI
<b>SIMD (2009)</b>			
1 (Most deprived)	1.09	1.04	1.14
2	1.10	1.05	1.16
3	1.04	0.99	1.10
4	1.02	0.97	1.08
5 (Least deprived)	1.00		

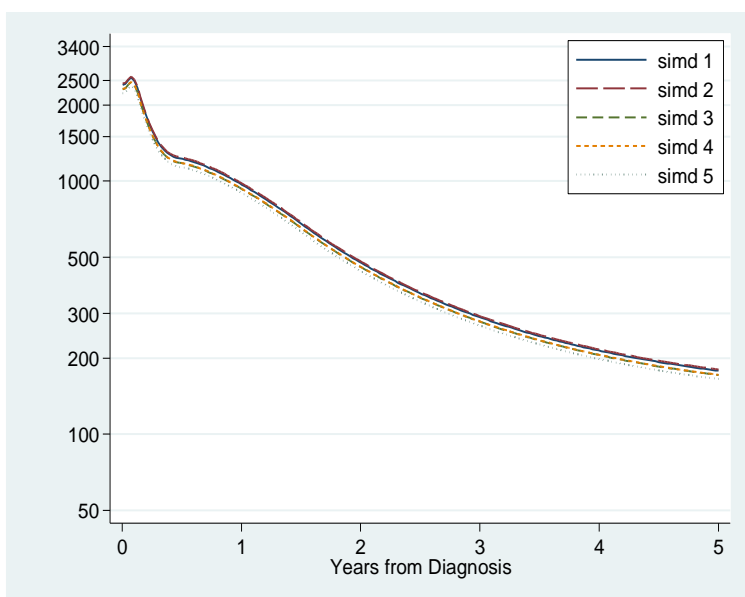
Figure D61: Excess Mortality from lung cancer by deprivation (incorporating grade)





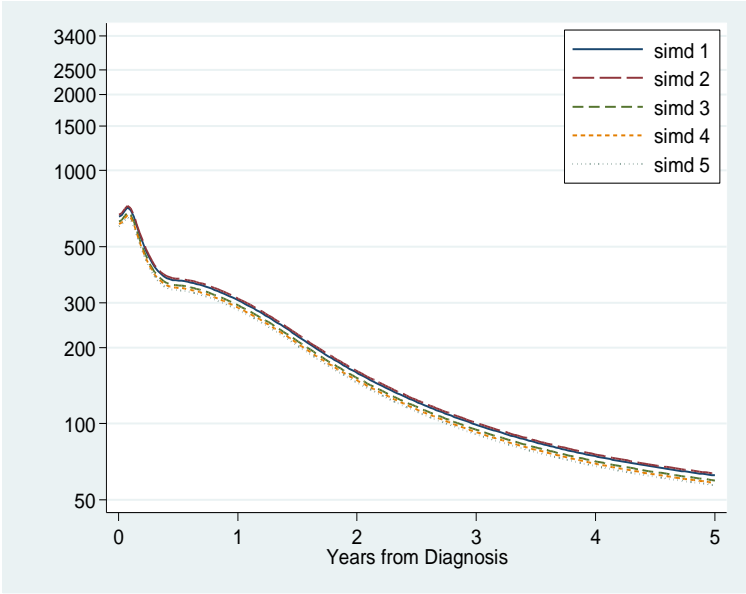
	Hazard Ratio	95% CI	
		LCI	UCI
SIMD (2009)			
1 (Most deprived)	1.10	1.05	1.16
2	1.12	1.07	1.18
3	1.07	1.01	1.12
4	1.05	0.99	1.11
5 (Least deprived)	1.00		

Figure D62: Excess Mortality from lung cancer by deprivation (incorporating stage)



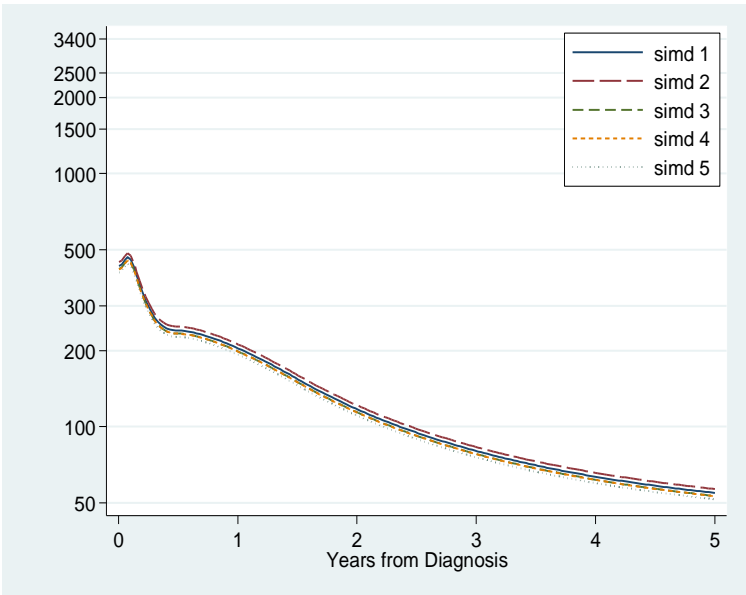
	Hazard Ratio	95% CI	
		LCI	UCI
<b>SIMD (2009)</b>			
1 (Most deprived)	1.08	1.03	1.13
2	1.09	1.04	1.15
3	1.04	0.98	1.09
4	1.04	0.98	1.10
5 (Least deprived)	1.00		

Figure D63: Excess Mortality from lung cancer by deprivation (incorporating small cell)



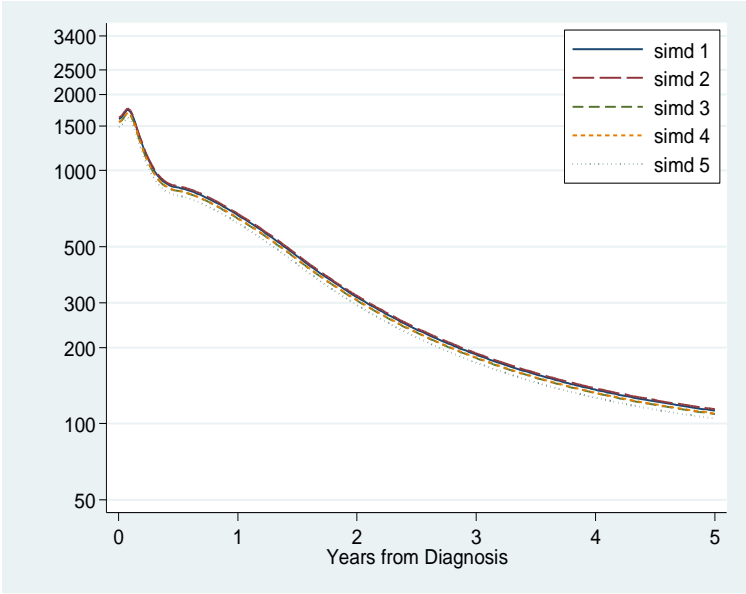
	Hazard Ratio	95% CI	
		LCI	UCI
SIMD (2009)			
1 (Most deprived)	1.09	1.04	1.15
2	1.11	1.06	1.17
3	1.04	0.99	1.10
4	1.02	0.96	1.08
5 (Least deprived)	1.00		

Figure D64: Excess Mortality from lung cancer by deprivation (incorporating clinical extent)



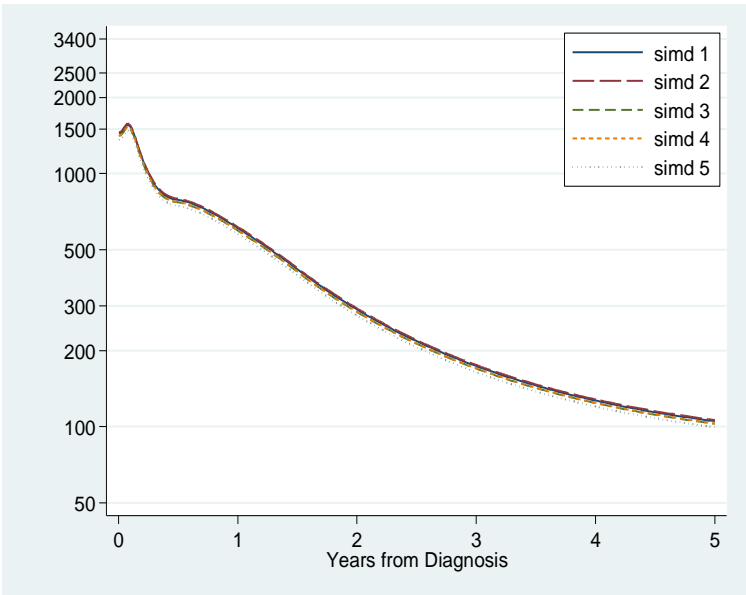
	Hazard Ratio	95% CI	
		LCI	UCI
SIMD (2009)			
1 (Most deprived)	1.06	1.01	1.11
2	1.10	1.04	1.15
3	1.03	0.98	1.09
4	1.03	0.97	1.09
5 (Least deprived)	1.00		

Figure D65: Excess Mortality from lung cancer by deprivation (incorporating surgery)



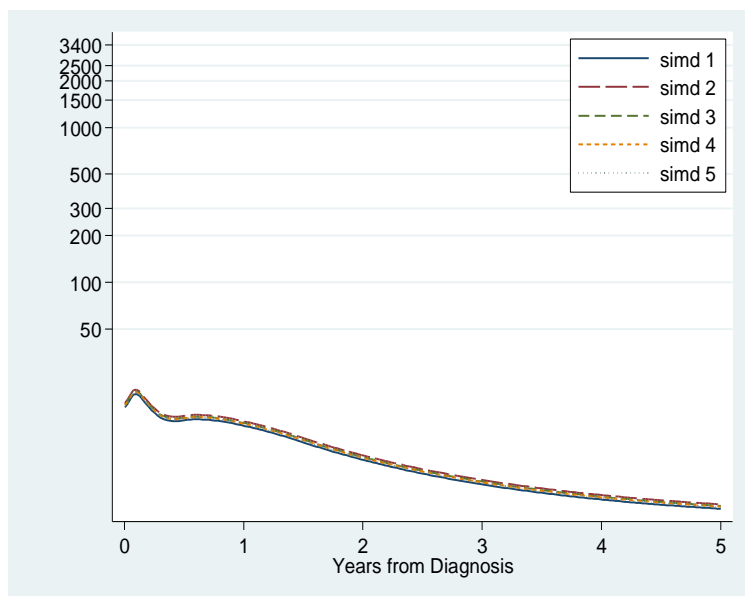
	Hazard Ratio	95% CI	
		LCI	UCI
SIMD (2009)			
1 (Most deprived)	1.08	1.02	1.13
2	1.09	1.03	1.14
3	1.04	0.99	1.10
4	1.05	0.99	1.11
5 (Least deprived)	1.00		

Figure D66: Excess Mortality from lung cancer by deprivation (incorporating radiotherapy)



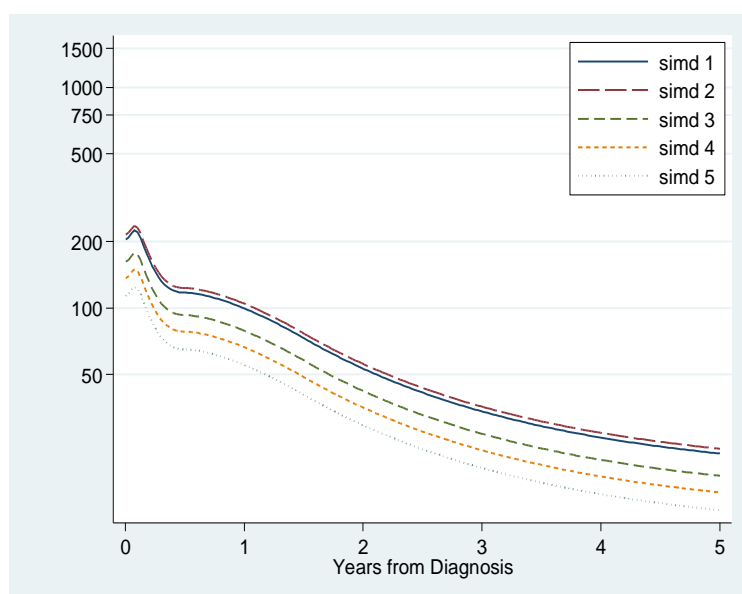
	Hazard Ratio	95% CI	
		LCI	UCI
SIMD (2009)			
1 (Most deprived)	1.06	1.01	1.11
2	1.07	1.01	1.12
3	1.03	0.98	1.09
4	1.03	0.98	1.09
5 (Least deprived)	1.00		

Figure D67: Excess Mortality from lung cancer by deprivation (incorporating chemotherapy)



	Hazard Ratio	95% CI	
		LCI	UCI
SIMD (2009)			
1 (Most deprived)	0.98	0.93	1.02
2	1.04	0.99	1.09
3	1.02	0.96	1.07
4	1.01	0.95	1.06
5 (Least deprived)	1.00		

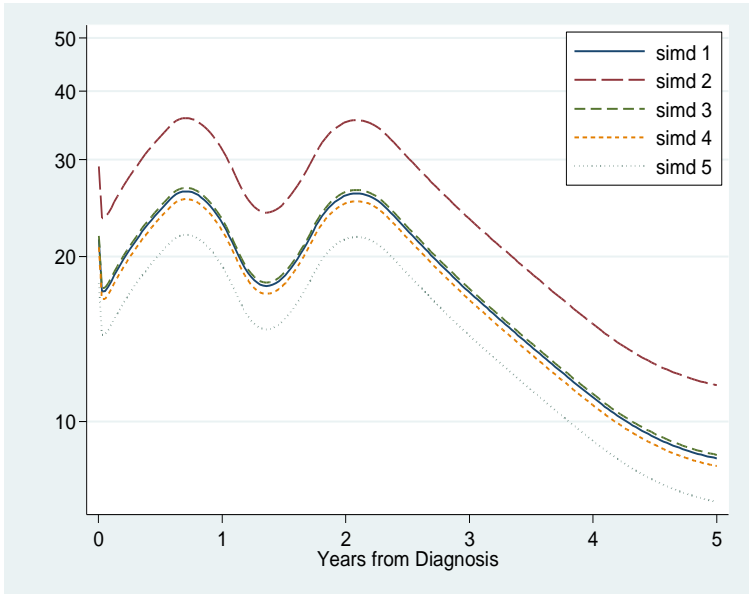
Figure D68: Excess Mortality from lung cancer by deprivation (incorporating all previously mentioned variables in the model)



	Hazard Ratio	95% CI	
		LCI	UCI
<b>SIMD (2009)</b>			
1 (Most deprived)	1.13	1.07	1.18
2	1.14	1.08	1.20
3	1.07	1.01	1.13
4	1.03	0.97	1.08
5 (Least deprived)	1.00		

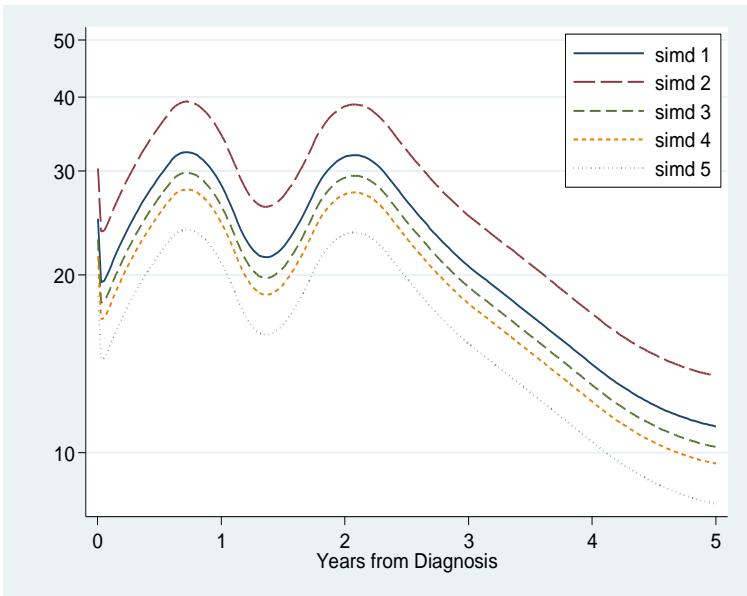
Figure D69: Excess Mortality from lung cancer by deprivation (incorporating all previously mentioned variables in the model except treatments)

Malignant Melanoma of Skin



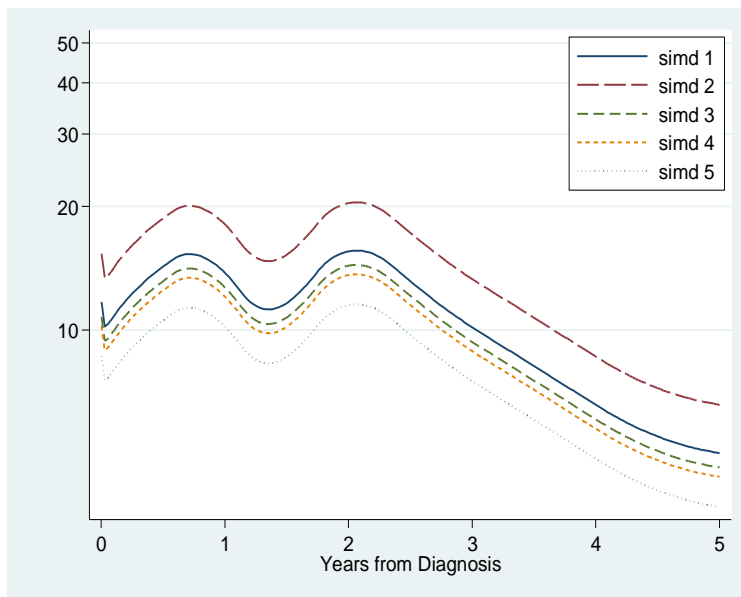
Unadjusted HR	95% CI		
	LCI	UCI	
SIMD (2009)			
1 (Most deprived)	1.20	0.62	1.78
2	1.63	1.03	2.24
3	1.22	0.73	1.70
4	1.16	0.71	1.61
5 (Least deprived)	1.00		

Figure D70: Excess Mortality from malignant melanoma of the skin by deprivation.



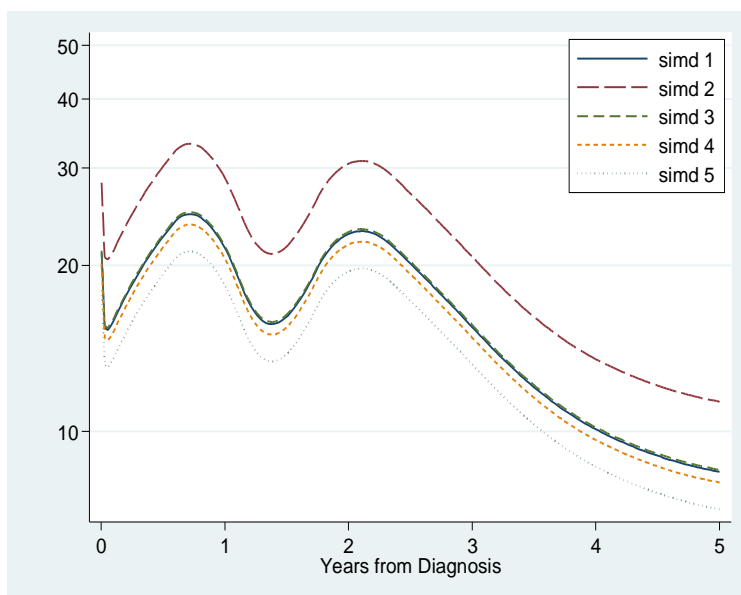
	Hazard Ratio	95% CI	
		LCI	UCI
SIMD (2009)			
1 (Most deprived)	1.35	0.74	1.96
2	1.65	1.06	2.24
3	1.25	0.77	1.73
4	1.17	0.73	1.61
5 (Least deprived)	1.00		

Figure D71: Excess Mortality from malignant melanoma of the skin by deprivation (incorporating age)



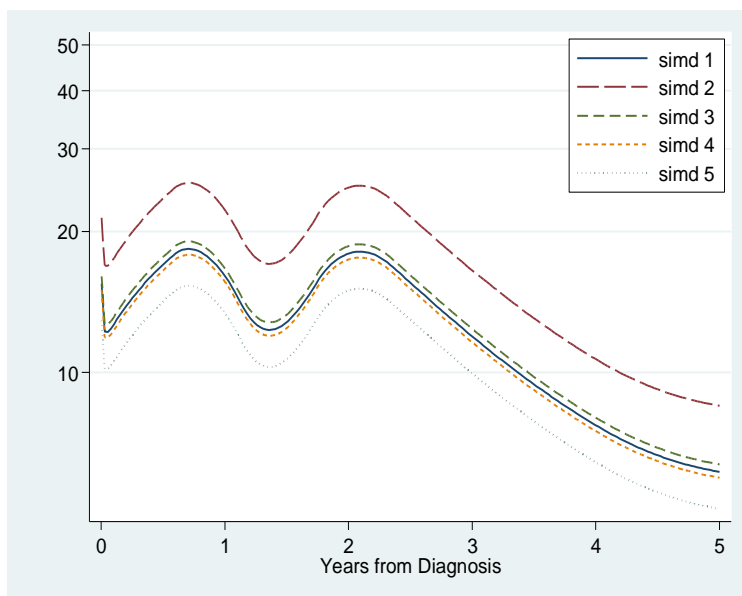
	Hazard Ratio	95% CI	
		LCI	UCI
SIMD (2009)			
1 (Most deprived)	1.35	0.74	1.96
2	1.77	1.14	2.41
3	1.25	0.77	1.73
4	1.18	0.74	1.63
5 (Least deprived)	1.00		

Figure D72: Excess Mortality from malignant melanoma of the skin by deprivation (incorporating sex)



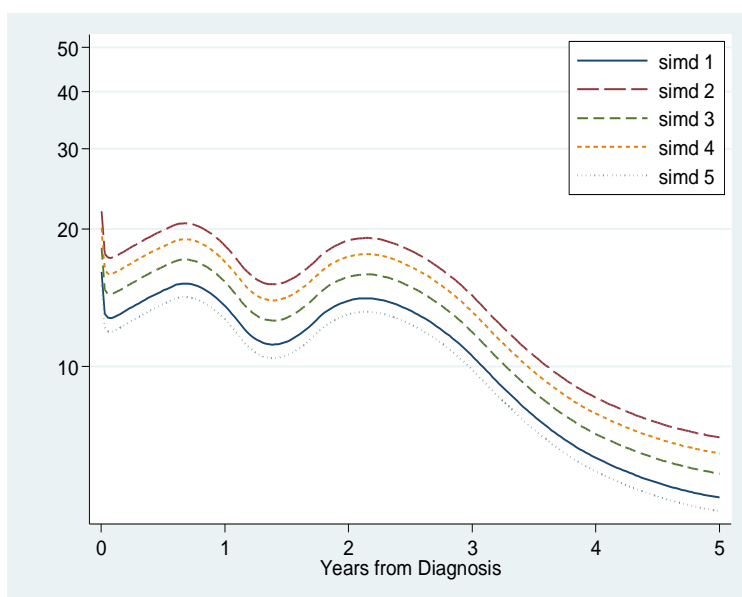
	Hazard Ratio	95% CI	
		LCI	UCI
SIMD (2009)			
1 (Most deprived)	1.17	0.64	1.69
2	1.57	1.01	2.12
3	1.18	0.73	1.62
4	1.12	0.70	1.54
5 (Least deprived)	1.00		

Figure D73: Excess Mortality from malignant melanoma of the skin by deprivation (incorporating Charlson Index of co-morbidity)



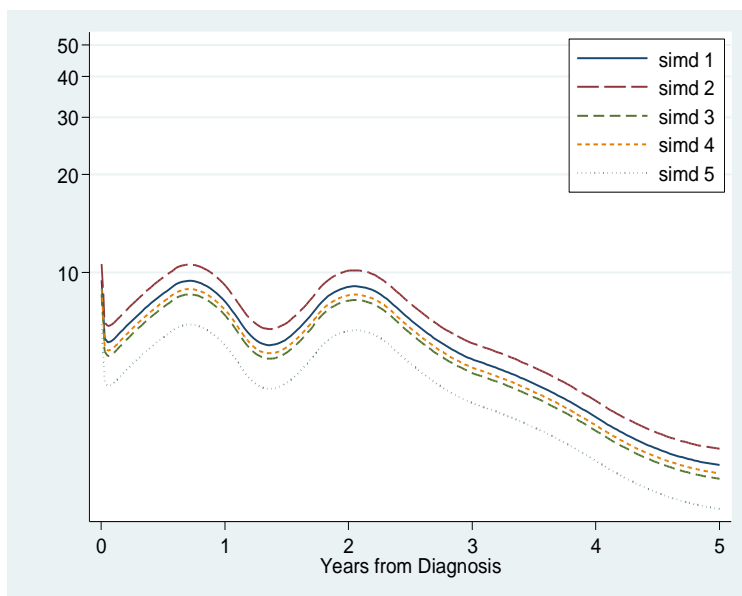
	Hazard Ratio	95% CI	
		LCI	UCI
SIMD (2009)			
1 (Most deprived)	1.20	0.62	1.78
2	1.66	1.05	2.27
3	1.24	0.75	1.74
4	1.17	0.71	1.62
5 (Least deprived)	1.00		

Figure D74: Excess Mortality from malignant melanoma of the skin by deprivation (incorporating inpatient bed days)



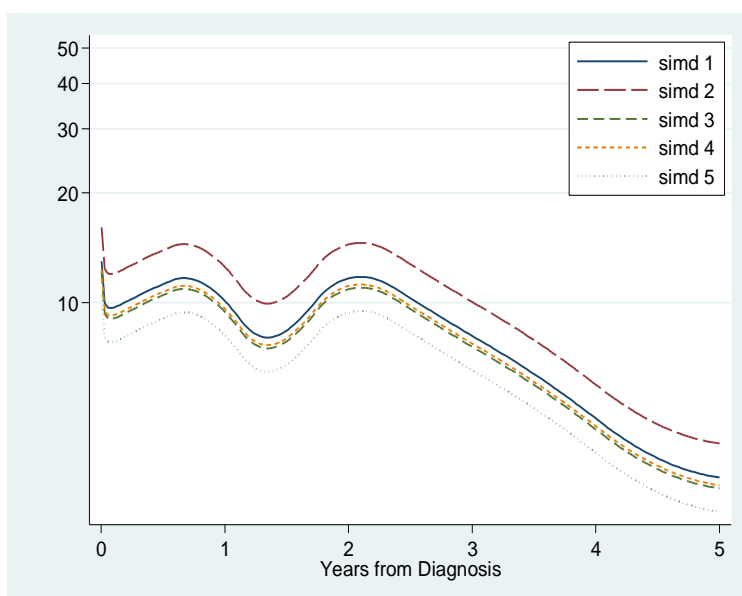
	Hazard Ratio	95% CI	
		LCI	UCI
SIMD (2009)			
1 (Most deprived)	1.07	0.58	1.56
2	1.45	0.93	1.97
3	1.21	0.76	1.66
4	1.34	0.85	1.83
5 (Least deprived)	1.00		

Figure D75: Excess Mortality from malignant melanoma of the skin by deprivation (incorporating metastases within 4 months)



	Hazard Ratio	95% CI	
		LCI	UCI
SIMD (2009)			
1 (Most deprived)	1.36	0.80	1.92
2	1.53	0.99	2.07
3	1.24	0.78	1.69
4	1.28	0.81	1.75
5 (Least deprived)	1.00		

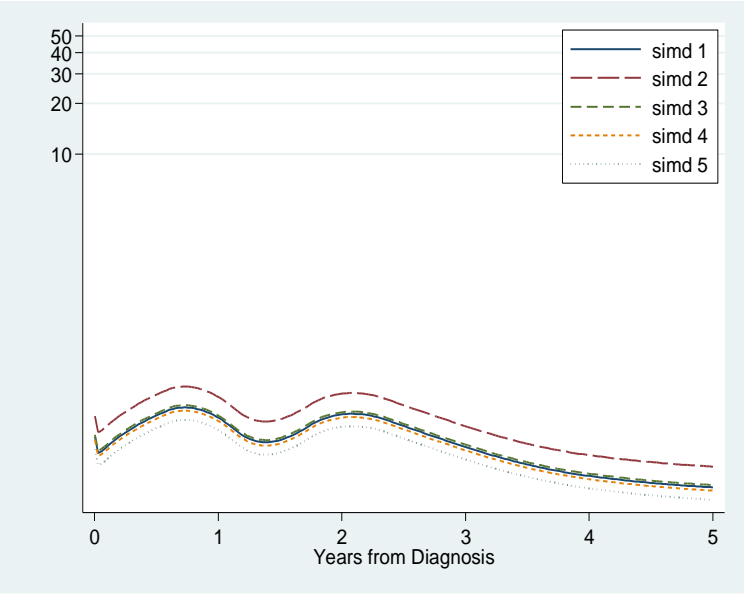
Figure D76: Excess Mortality from malignant melanoma of the skin by deprivation (incorporating tumour morphology)



	Hazard Ratio	95% CI	
		LCI	UCI
SIMD (2009)			
1 (Most deprived)	1.24	0.67	1.81
2	1.54	0.98	2.10
3	1.16	0.71	1.61
4	1.18	0.74	1.63
5 (Least deprived)	1.00		

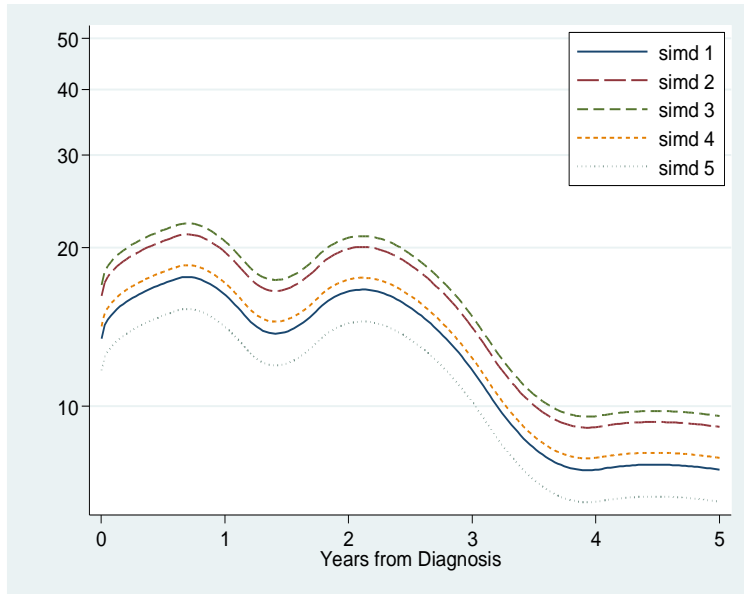
Figure D77: Excess Mortality from malignant melanoma of the skin by deprivation (incorporating subsite)





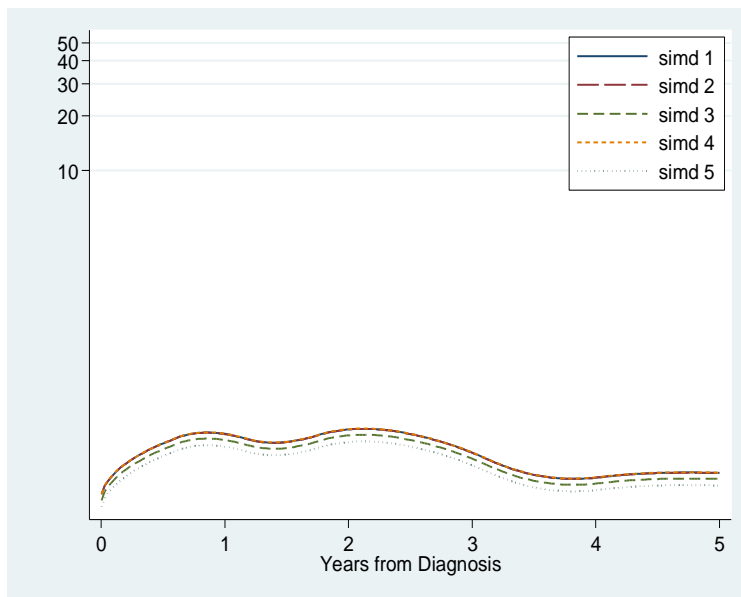
	Hazard Ratio	95% CI	
		LCI	UCI
SIMD (2009)			
1 (Most deprived)	1.18	0.70	1.67
2	1.57	1.03	2.11
3	1.22	0.78	1.66
4	1.13	0.73	1.54
5 (Least deprived)	1.00		

Figure D78: Excess Mortality from malignant melanoma of the skin by deprivation (incorporating Clarks level)



	Hazard Ratio	95% CI	
		LCI	UCI
SIMD (2009)			
1 (Most deprived)	1.15	0.54	1.75
2	1.39	0.81	1.96
3	1.45	0.87	2.03
4	1.21	0.71	1.71
5 (Least deprived)	1.00		

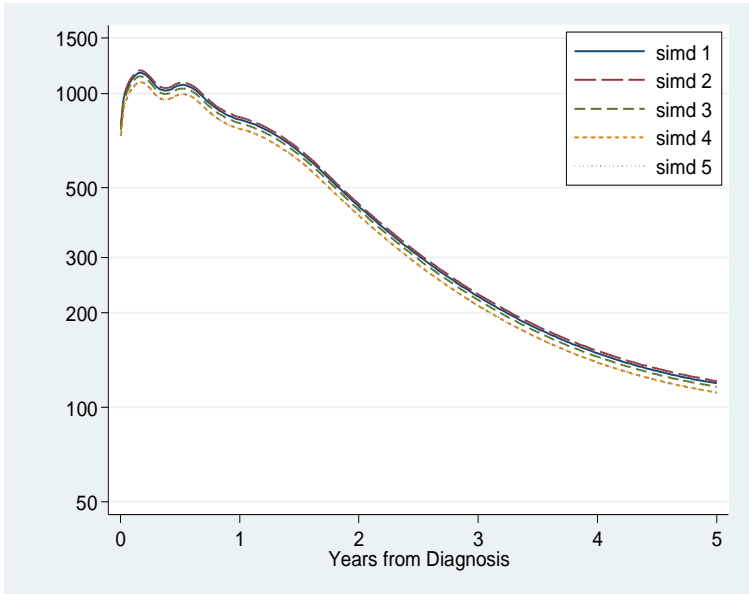
Figure D79: Excess Mortality from malignant melanoma of the skin by deprivation (incorporating Breslow thickness)



	Hazard Ratio	95% CI	
		LCI	UCI
SIMD (2009)			
1 (Most deprived)	1.17	0.70	1.64
2	1.17	0.75	1.59
3	1.09	0.70	1.47
4	1.18	0.75	1.60
5 (Least deprived)	1.00		

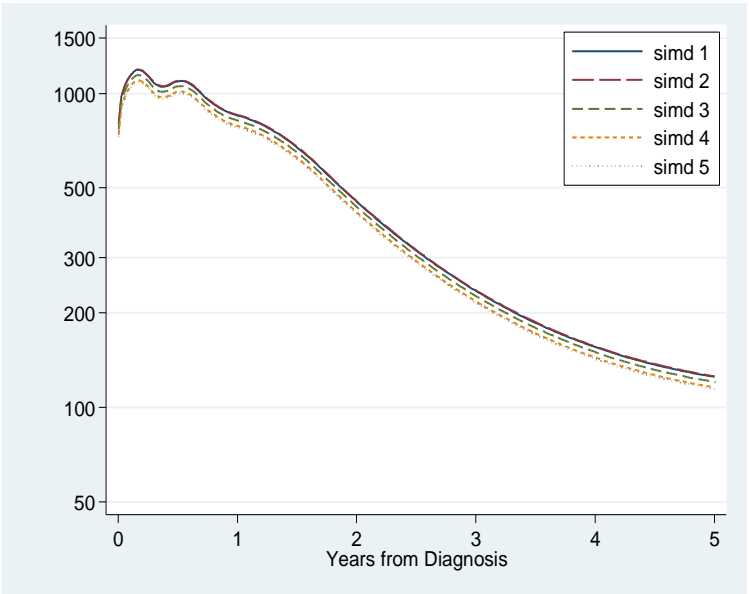
*Figure D80: Excess Mortality from malignant melanoma of the skin by deprivation (incorporating all previously mentioned variables)*

Oesophageal Cancer



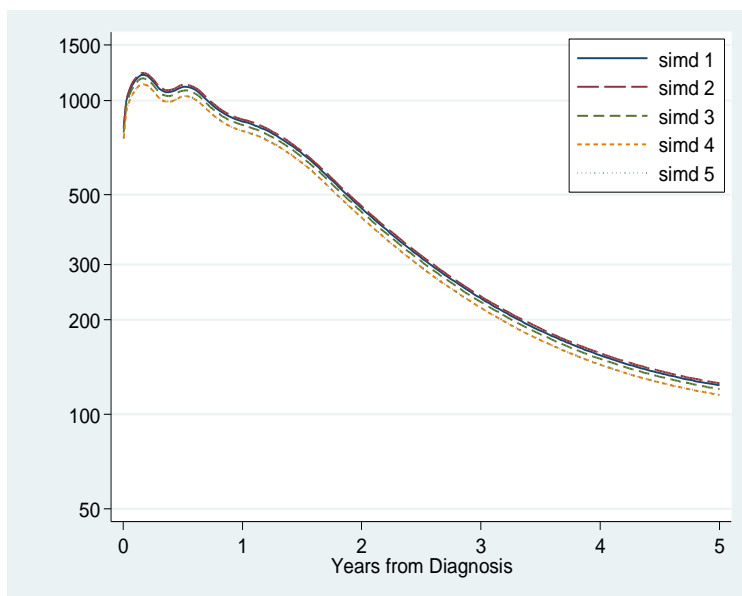
Unadjusted HR	95% CI	
	LCI	UCI
<b>SIMD (2009)</b>		
1 (Most deprived)	1.07	0.95 1.19
2	1.09	0.97 1.21
3	1.04	0.92 1.16
4	1.00	0.88 1.12
5 (Least deprived)	1.00	

Figure D81: Excess Mortality from oesophageal cancer by deprivation.



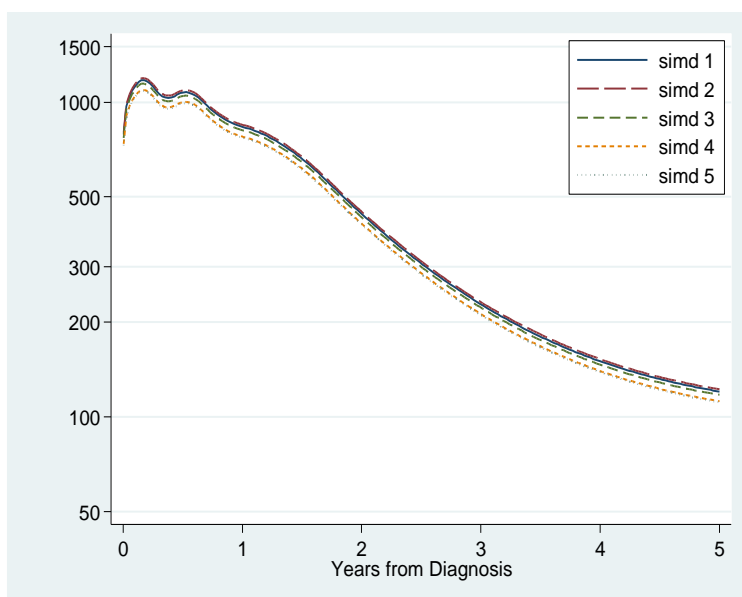
	Hazard Ratio	95% CI	
		LCI	UCI
SIMD (2009)			
1 (Most deprived)	1.09	0.97	1.22
2	1.10	0.98	1.22
3	1.05	0.93	1.17
4	1.01	0.89	1.13
5 (Least deprived)	1.00		

. Figure D82: Excess Mortality from oesophageal cancer by deprivation (incorporating age)



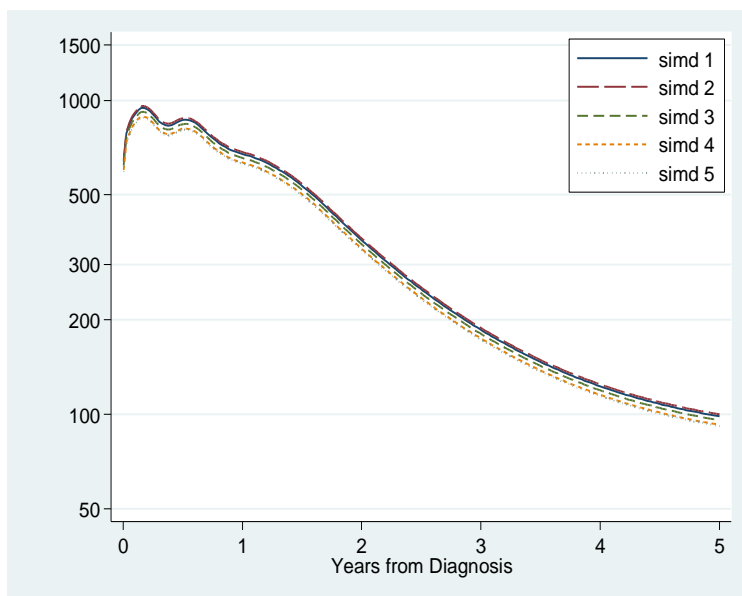
	Hazard Ratio	95% CI	
		LCI	UCI
SIMD (2009)			
1 (Most deprived)	1.07	0.95	1.19
2	1.09	0.97	1.21
3	1.04	0.92	1.16
4	1.00	0.88	1.12
5 (Least deprived)	1.00		

Figure D83: Excess Mortality from oesophageal cancer by deprivation (incorporating sex)



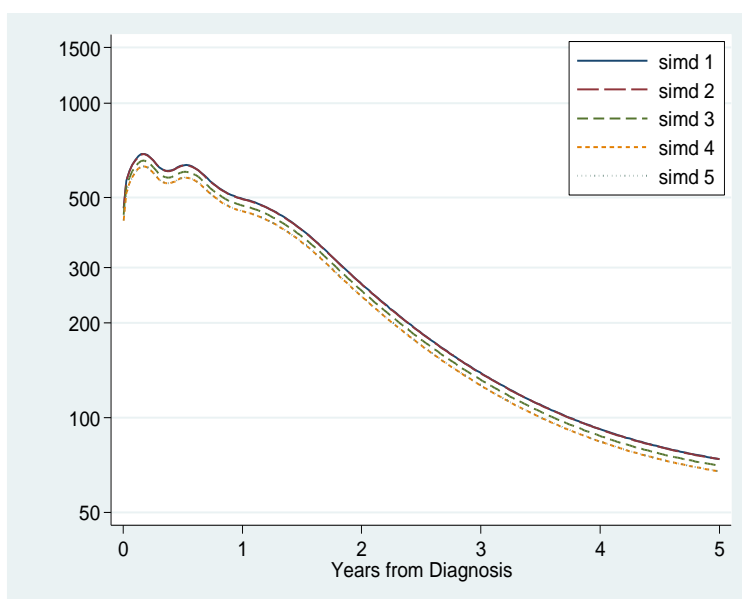
	Hazard Ratio	95% CI	
		LCI	UCI
SIMD (2009)			
1 (Most deprived)	1.08	0.96	1.21
2	1.10	0.98	1.22
3	1.06	0.94	1.18
4	1.01	0.89	1.13
5 (Least deprived)	1.00		

Figure D84: Excess Mortality from oesophageal cancer by deprivation (incorporating Charlson Index of co-morbidity)



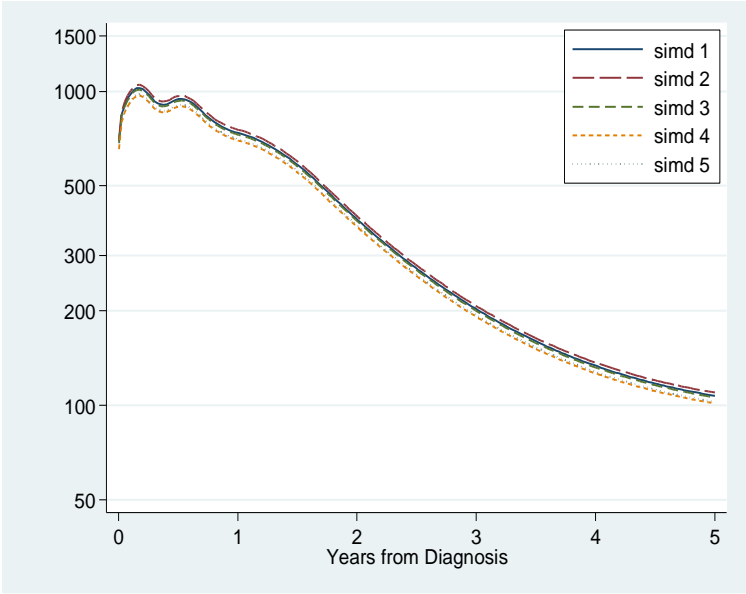
	Hazard Ratio	95% CI	
		LCI	UCI
SIMD (2009)			
1 (Most deprived)	1.07	0.95	1.20
2	1.09	0.97	1.21
3	1.04	0.92	1.16
4	1.01	0.89	1.13
5 (Least deprived)	1.00		

Figure D85: Excess Mortality from oesophageal cancer by deprivation (incorporating inpatient bed days)



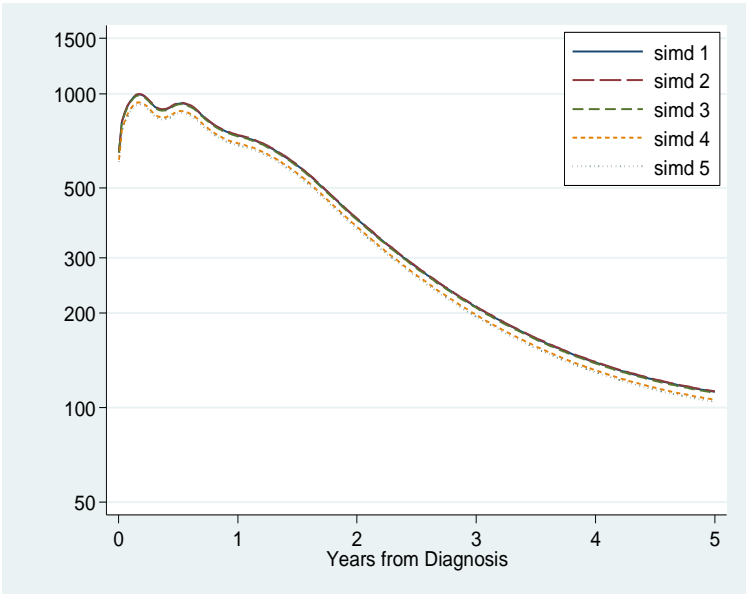
	Hazard Ratio	95% CI	
		LCI	UCI
SIMD (2009)			
1 (Most deprived)	1.09	0.97	1.22
2	1.09	0.97	1.21
3	1.04	0.92	1.16
4	1.00	0.88	1.12
5 (Least deprived)	1.00		

Figure D86: Excess Mortality from oesophageal cancer by deprivation (incorporating grade of differentiation)



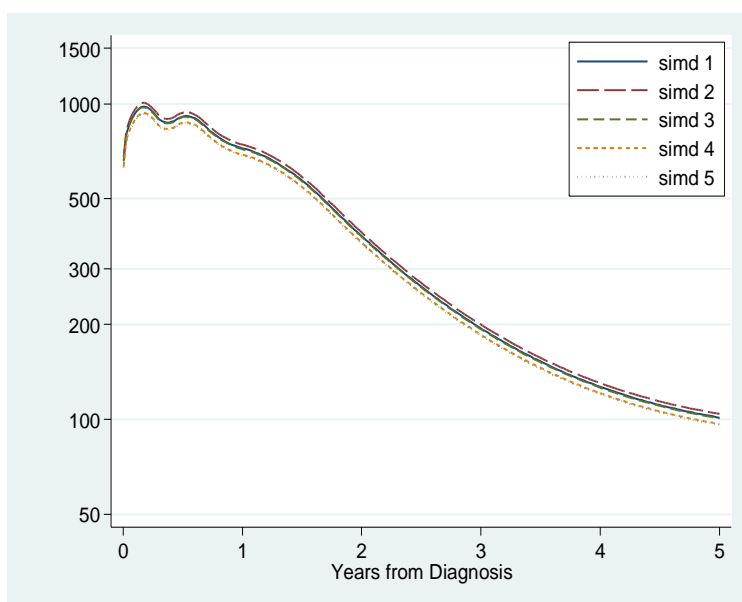
	Hazard Ratio	95% CI	
		LCI	UCI
<b>SIMD (2009)</b>			
1 (Most deprived)	1.05	0.93	1.16
2	1.07	0.95	1.19
3	1.03	0.91	1.15
4	0.99	0.87	1.11
5 (Least deprived)	1.00		

Figure D87: Excess Mortality from oesophageal cancer by deprivation (incorporating subsite)



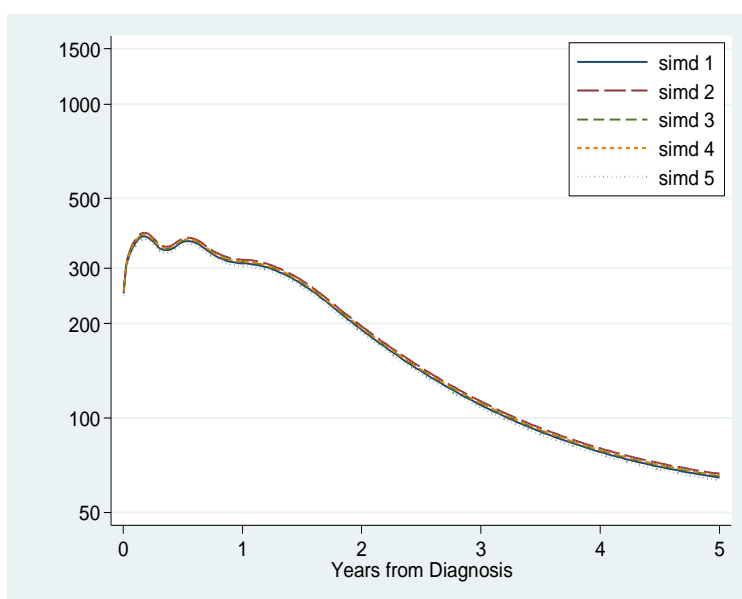
	Hazard Ratio	95% CI	
		LCI	UCI
<b>SIMD (2009)</b>			
1 (Most deprived)	1.08	0.95	1.20
2	1.08	0.96	1.20
3	1.07	0.95	1.19
4	1.01	0.89	1.14
5 (Least deprived)	1.00		

Figure D88: Excess Mortality from oesophageal cancer by deprivation (incorporating metastases within 4 months)



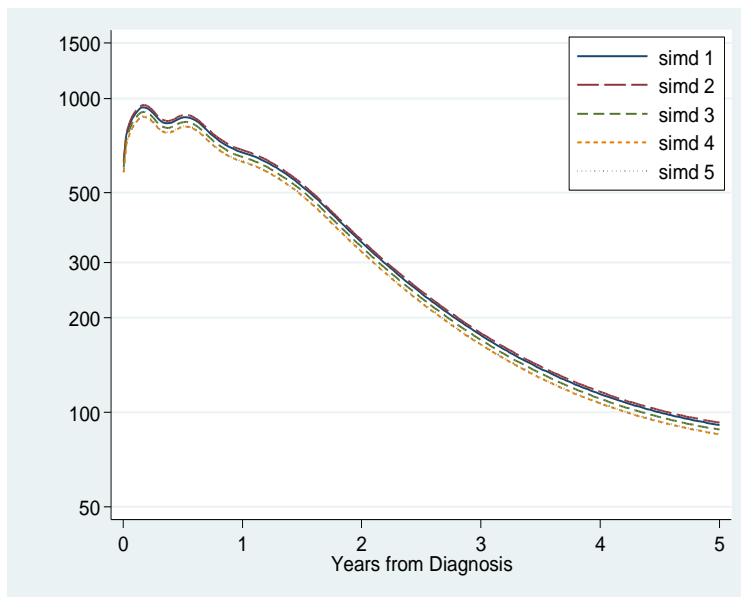
	Hazard Ratio	95% CI	
		LCI	UCI
SIMD (2009)			
1 (Most deprived)	1.06	0.94	1.17
2	1.08	0.96	1.20
3	1.05	0.93	1.17
4	1.01	0.89	1.13
5 (Least deprived)	1.00		

Figure D89: Excess Mortality from oesophageal cancer by deprivation (incorporating morphology)



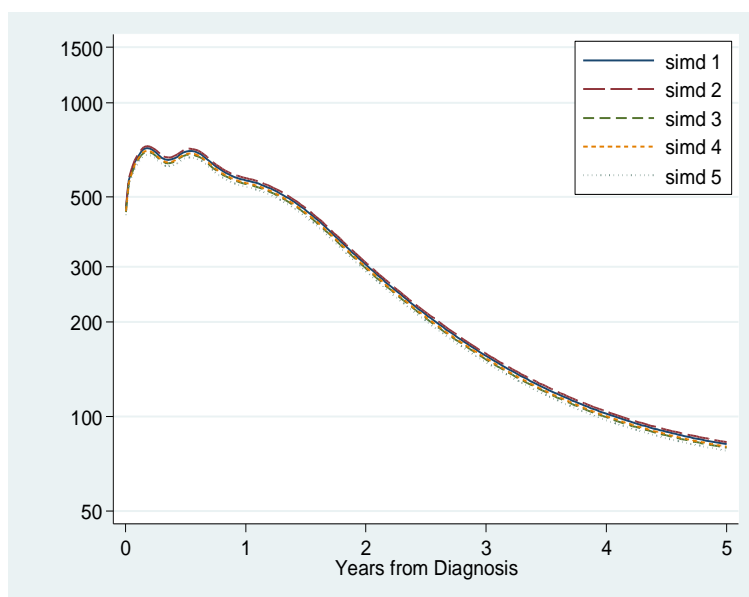
	Hazard Ratio	95% CI	
		LCI	UCI
SIMD (2009)			
1 (Most deprived)	1.02	0.91	1.14
2	1.05	0.93	1.16
3	1.03	0.91	1.15
4	1.04	0.91	1.16
5 (Least deprived)	1.00		

Figure D90: Excess Mortality from oesophageal cancer by deprivation (incorporating surgery)



	Hazard Ratio	95% CI	
		LCI	UCI
<b>SIMD (2009)</b>			
1 (Most deprived)	1.07	0.95	1.19
2	1.09	0.96	1.21
3	1.03	0.91	1.15
4	1.00	0.88	1.11
5 (Least deprived)	1.00		

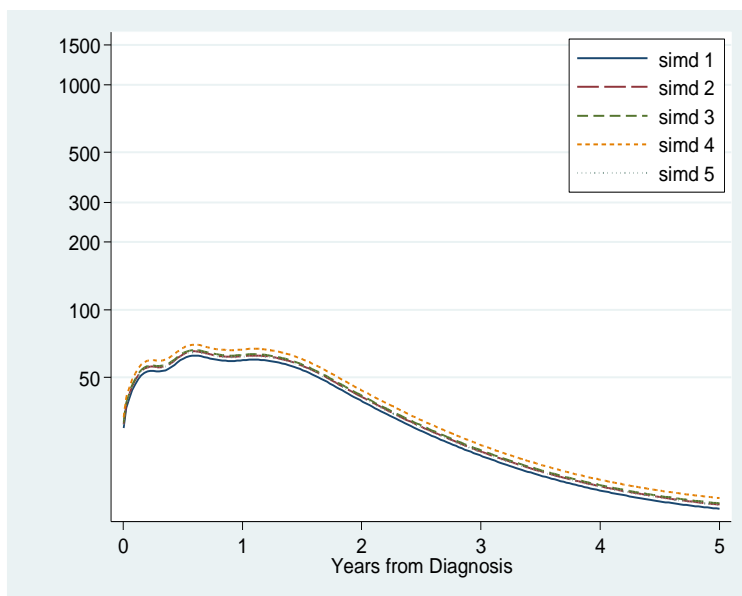
Figure D91: Excess Mortality from oesophageal cancer by deprivation (incorporating radiography)



	Hazard Ratio	95% CI	
		LCI	UCI
SIMD (2009)			
1 (Most deprived)	1.05	0.93	1.17
2	1.07	0.95	1.18
3	1.02	0.91	1.14
4	1.03	0.91	1.15
5 (Least deprived)	1.00		

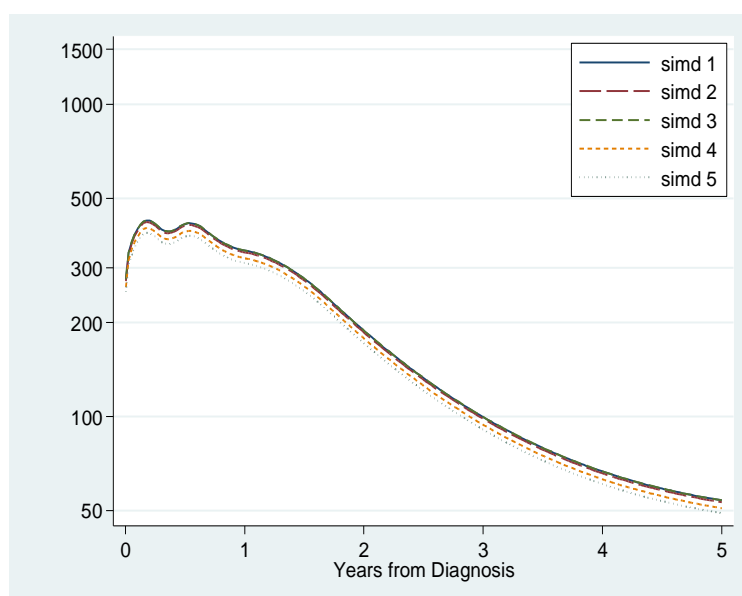
Figure D92: Excess Mortality from oesophageal cancer by deprivation (incorporating chemotherapy)





	Hazard Ratio	95% CI	
		LCI	UCI
SIMD (2009)			
1 (Most deprived)	0.96	0.85	1.07
2	1.01	0.89	1.12
3	1.02	0.90	1.13
4	1.08	0.95	1.20
5 (Least deprived)	1.00		

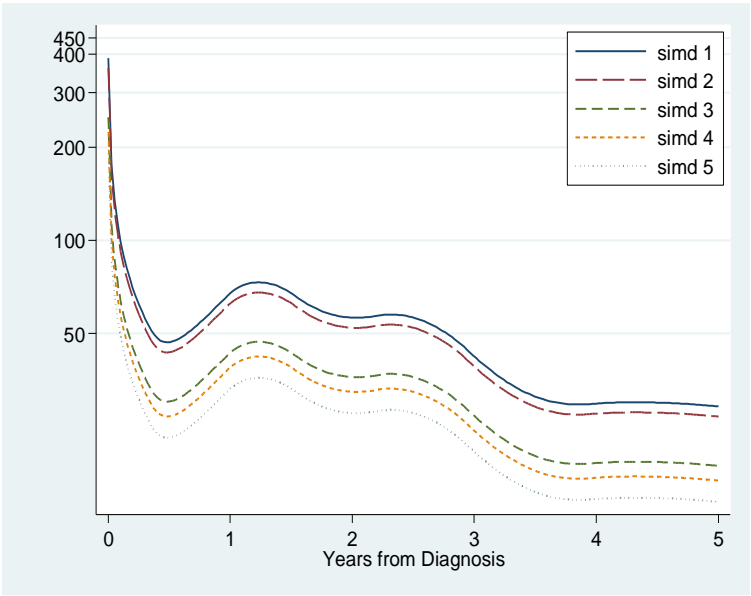
Figure D93: Excess Mortality from oesophageal cancer by deprivation (incorporating all previously mentioned variables)



	Hazard Ratio	95% CI	
		LCI	UCI
SIMD (2009)			
1 (Most deprived)	1.10	0.97	1.22
2	1.08	0.96	1.20
3	1.10	0.97	1.22
4	1.04	0.91	1.16
5 (Least deprived)	1.00		

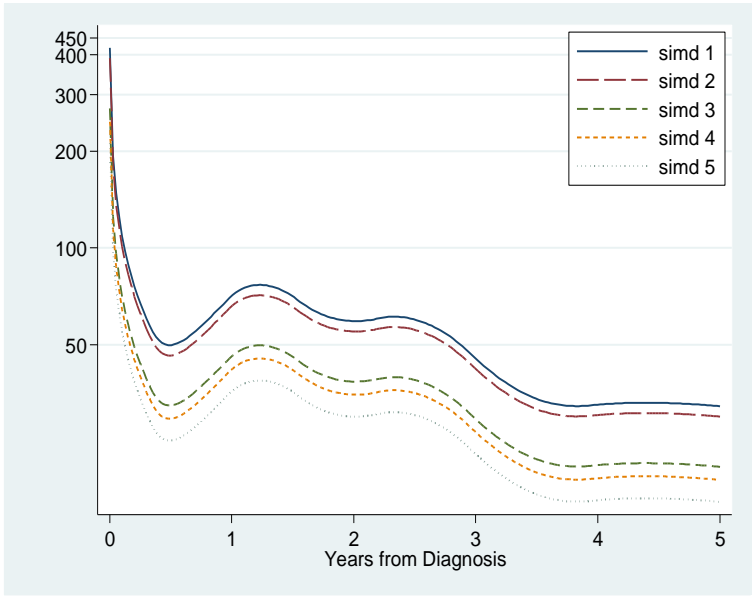
Figure D94: Excess Mortality from oesophageal cancer by deprivation (incorporating all previously mentioned variables in the model, except treatment variables)

Prostate Cancer



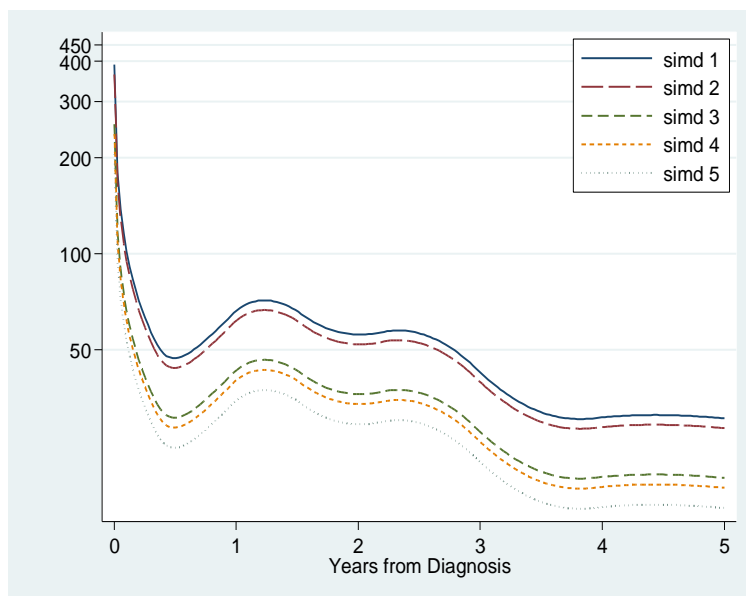
Unadjusted HR	95% CI	
	LCI	UCI
SIMD (2009)		
1 (Most deprived)	1.98	1.60 2.36
2	1.84	1.50 2.18
3	1.29	1.03 1.54
4	1.17	0.93 1.41
5 (Least deprived)	1.00	

Figure D95: Excess Mortality from prostate cancer by deprivation.



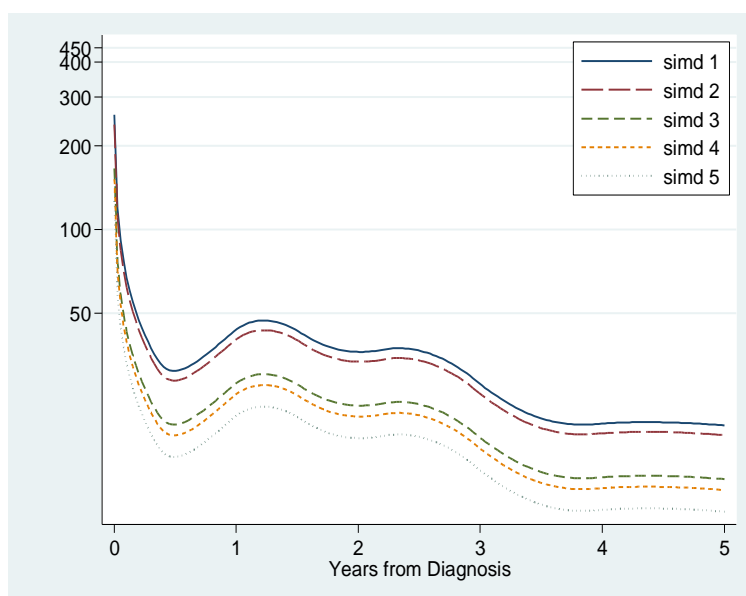
Hazard Ratio	95% CI	
	LCI	UCI
SIMD (2009)		
1 (Most deprived)	2.03	1.63 2.43
2	1.89	1.53 2.24
3	1.31	1.04 1.57
4	1.17	0.93 1.41
5 (Least deprived)	1.00	

Figure D96: Excess Mortality from prostate cancer by deprivation (incorporating age)



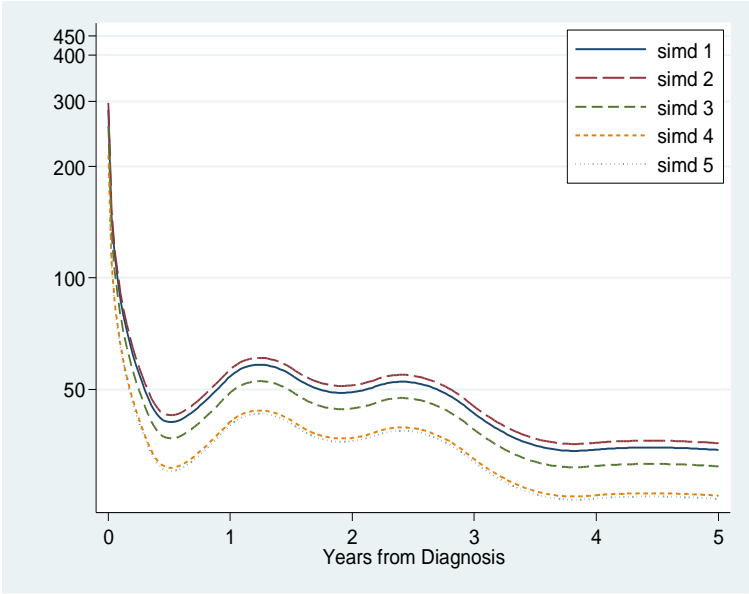
	Hazard Ratio	95% CI	
		LCI	UCI
SIMD (2009)			
1 (Most deprived)	1.91	1.54	2.27
2	1.78	1.45	2.11
3	1.24	1.00	1.49
4	1.16	0.93	1.39
5 (Least deprived)	1.00		

Figure D97: Excess Mortality from prostate cancer by deprivation (incorporating Charlson Index of co-morbidity)



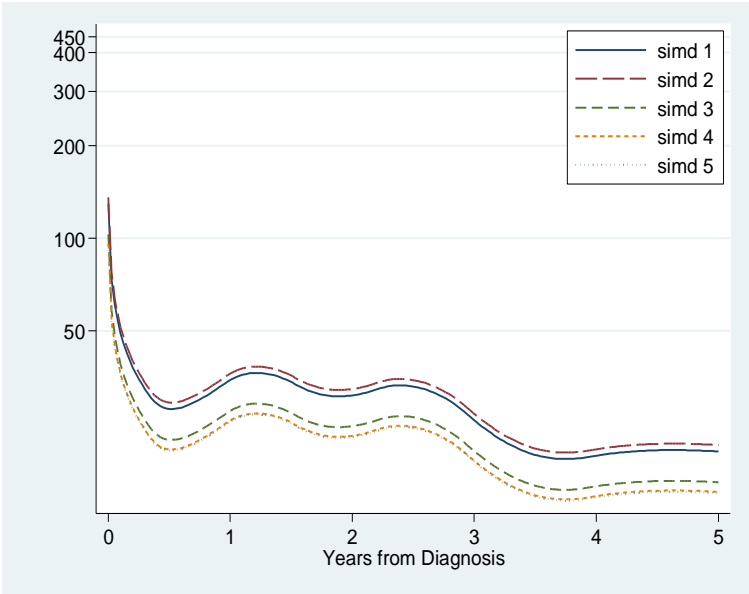
	Hazard Ratio	95% CI	
		LCI	UCI
SIMD (2009)			
1 (Most deprived)	2.04	1.65	2.44
2	1.89	1.53	2.24
3	1.31	1.05	1.57
4	1.20	0.95	1.44
5 (Least deprived)	1.00		

Figure D98: Excess Mortality from prostate cancer by deprivation (incorporating inpatient bed days)



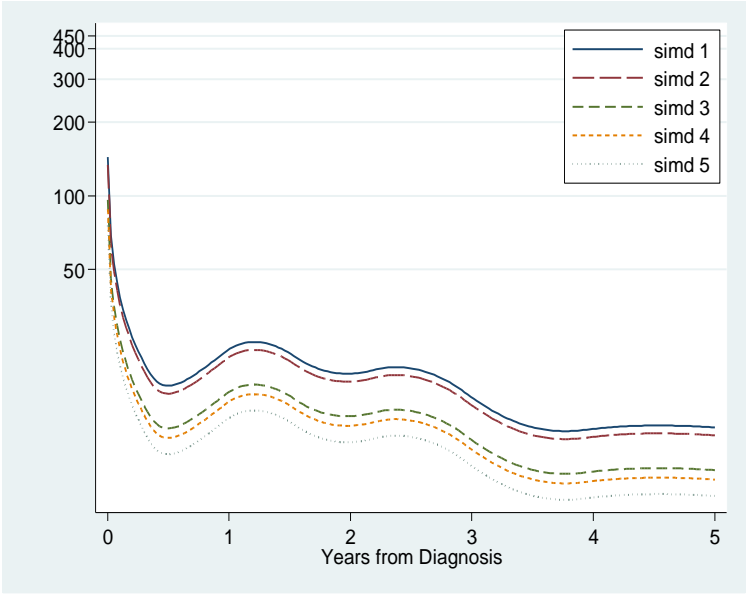
	Hazard Ratio	95% CI	
		LCI	UCI
SIMD (2009)			
1 (Most deprived)	1.36	1.15	1.56
2	1.41	1.20	1.62
3	1.22	1.04	1.41
4	1.02	0.86	1.18
5 (Least deprived)	1.00		

Figure D99: Excess Mortality from prostate cancer by deprivation (incorporating Gleason Score)



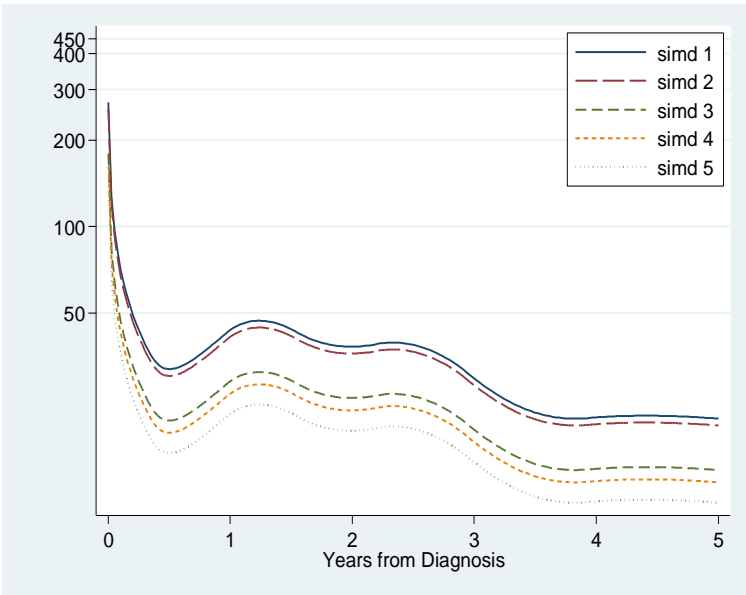
	Hazard Ratio	95% CI	
		LCI	UCI
<b>SIMD (2009)</b>			
1 (Most deprived)	1.37	1.12	1.61
2	1.43	1.19	1.67
3	1.08	0.89	1.28
4	1.01	0.83	1.19
5 (Least deprived)	1.00		

Figure D100: Excess Mortality from prostate cancer by deprivation (incorporating metastases within 4 months (Y/No record))



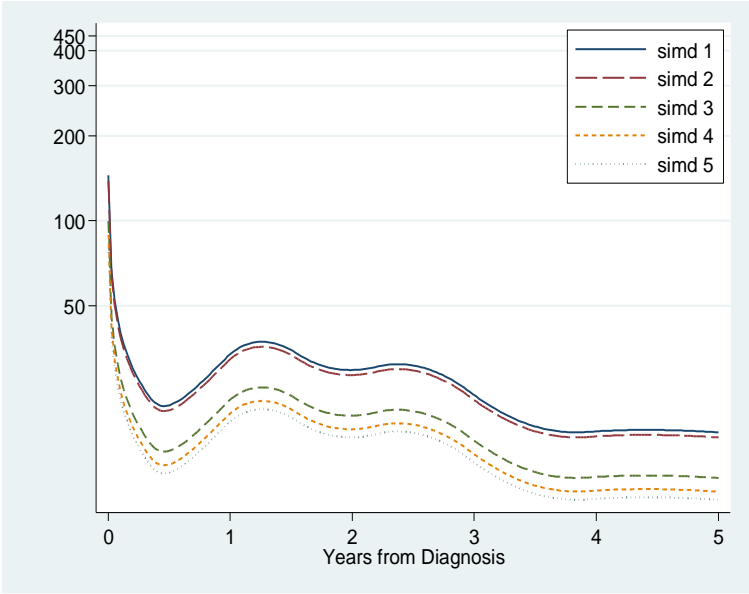
	Hazard Ratio	95% CI	
		LCI	UCI
<b>SIMD (2009)</b>			
1 (Most deprived)	1.91	1.55	2.26
2	1.77	1.45	2.09
3	1.28	1.03	1.53
4	1.17	0.94	1.40
5 (Least deprived)	1.00		

Figure D101: Excess Mortality from prostate cancer by deprivation (incorporating surgery)



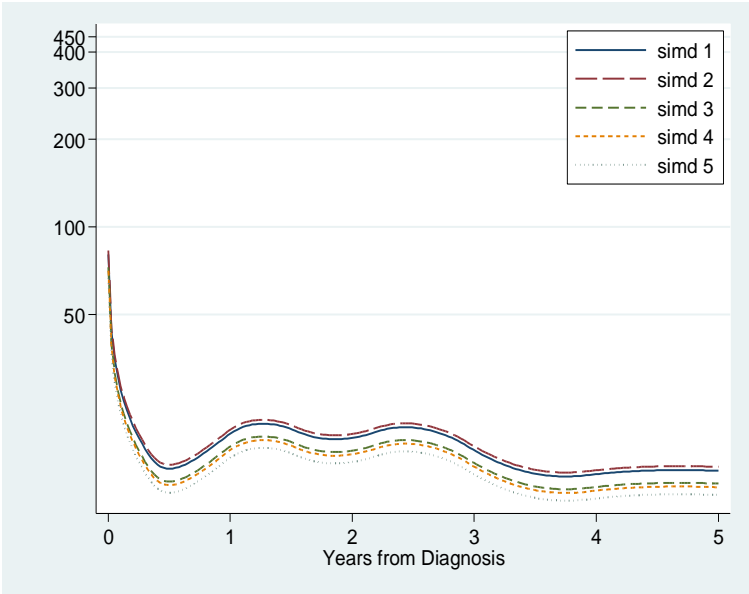
	Hazard Ratio	95% CI	
		LCI	UCI
<b>SIMD (2009)</b>			
1 (Most deprived)	1.96	1.59	2.33
2	1.86	1.52	2.20
3	1.30	1.04	1.56
4	1.18	0.94	1.41
5 (Least deprived)	1.00		

Figure D102: Excess Mortality from prostate cancer by deprivation (incorporating radiotherapy)



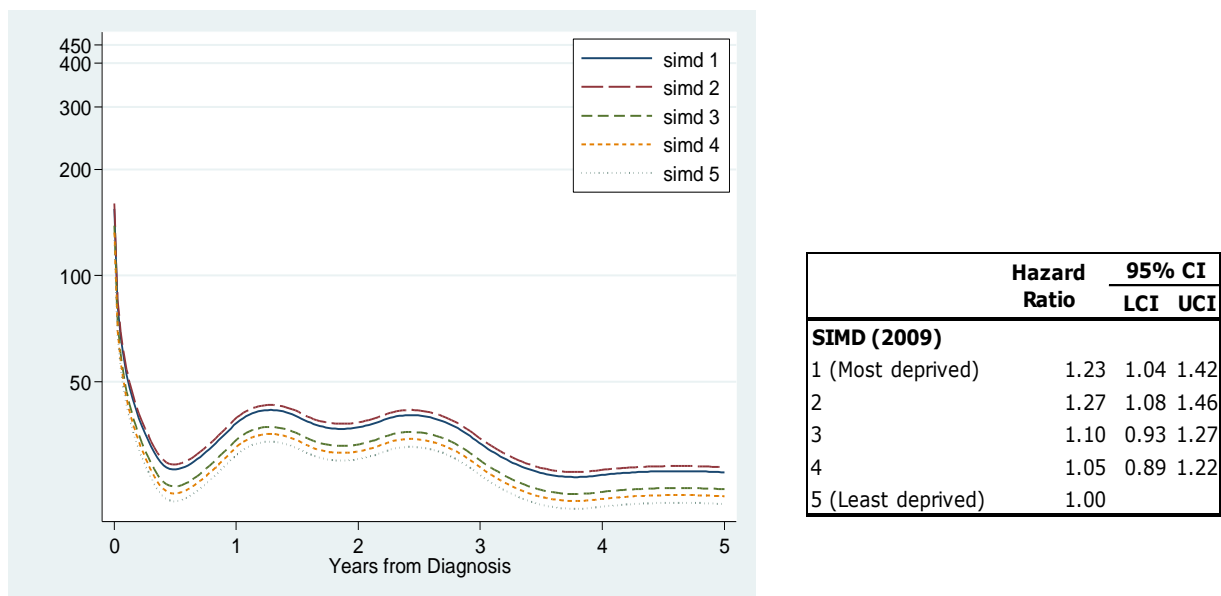
	Hazard Ratio	95% CI	
		LCI	UCI
<b>SIMD (2009)</b>			
1 (Most deprived)	1.73	1.41	2.05
2	1.66	1.37	1.96
3	1.19	0.97	1.42
4	1.07	0.86	1.28
5 (Least deprived)	1.00		

Figure D103: Excess Mortality from prostate cancer by deprivation (incorporating hormonal therapy)



	Hazard Ratio	95% CI	
		LCI	UCI
SIMD (2009)			
1 (Most deprived)	1.21	1.02	1.40
2	1.25	1.06	1.43
3	1.09	0.93	1.26
4	1.06	0.90	1.23
5 (Least deprived)	1.00		

Figure D104: Excess Mortality from prostate cancer by deprivation (incorporating all previously mentioned variables in the model)



*Figure D105: Excess Mortality from prostate cancer by deprivation (incorporating all previously mentioned variables in the model, except treatment variables)*