

Bead and Lace Heart Comfort Square

Martin Storey's pattern features a simple beaded and lace heart motif

SQUARE

Thread sewing needle with thread and tie into a small loop. Pass end of yarn through loop and use needle to thread beads onto yarn.

Using 4mm needles and thumb method, cast on 45 sts.

Work from chart, beginning at bottom right hand corner (1st row is RS of work) as follows:

Chart row 1 (RS): K1, *P1, K1; rep from * to end

Chart row 2: As row 1.

These 2 rows form moss st. Work 4 more rows in moss st, RS facing for next row. Cont to work from chart as follows:

Chart row 7 (RS): K1, (P1, K1) twice, K to last 5 sts, (K1, P1) twice, K1.

Chart row 8: K1, (P1, K1) twice, P to last 5 sts, (K1, P1) twice, K1.

Rep the last 2 rows 5 more times. 18 rows worked in total.

Chart row 19: K1, (P1, K1) twice, K17, place bead, K17, (K1, P1) twice, K1.

Chart row 20: As row 8.

Cont to work sts and place beads as set out on chart to row 59, WS facing for next row.

Chart row 60 (WS): Cast off all sts in moss st.

Weave in ends and block gently to measurements.

For more beautiful blanket square patterns from top international designers, go online to www.macmillan.org.uk/theknitter.



SIZE

20cm x 20cm (8in x 8in)

YARN

Rowan Purelife Organic Wool Naturally Dyed (100% organic wool, 50g/125m)
1 ball in shade Ivy (602)

NEEDLES

1 pair 4mm (size 8/US 6) knitting needles
30 silver beads large enough to go onto DK yarn
Sewing needle and thread

TENSION

22 sts and 30 rows to 10 cm over stocking stitch using 4mm needles

ABBREVIATIONS

cont: continue

dec.2: K2tog and slip this st back onto left hand needle, lift 2nd st on left needle over this st and off left needle, then slip st back onto right hand needle. 2 sts decreased.

foll: follows

K: knit

K2tog: knit 2 stitches together

P: purl

place bead: on right side rows, place bead by bringing yarn to RS of work, and slipping bead up next to stitch just worked, slip next stitch purlwise from left needle to right needle and take yarn to WS, leaving bead sitting in front of slipped stitch.

pssso: pass slipped stitch over

rep: repeat

RS: right side

Sl 1: slip 1 stitch knitwise

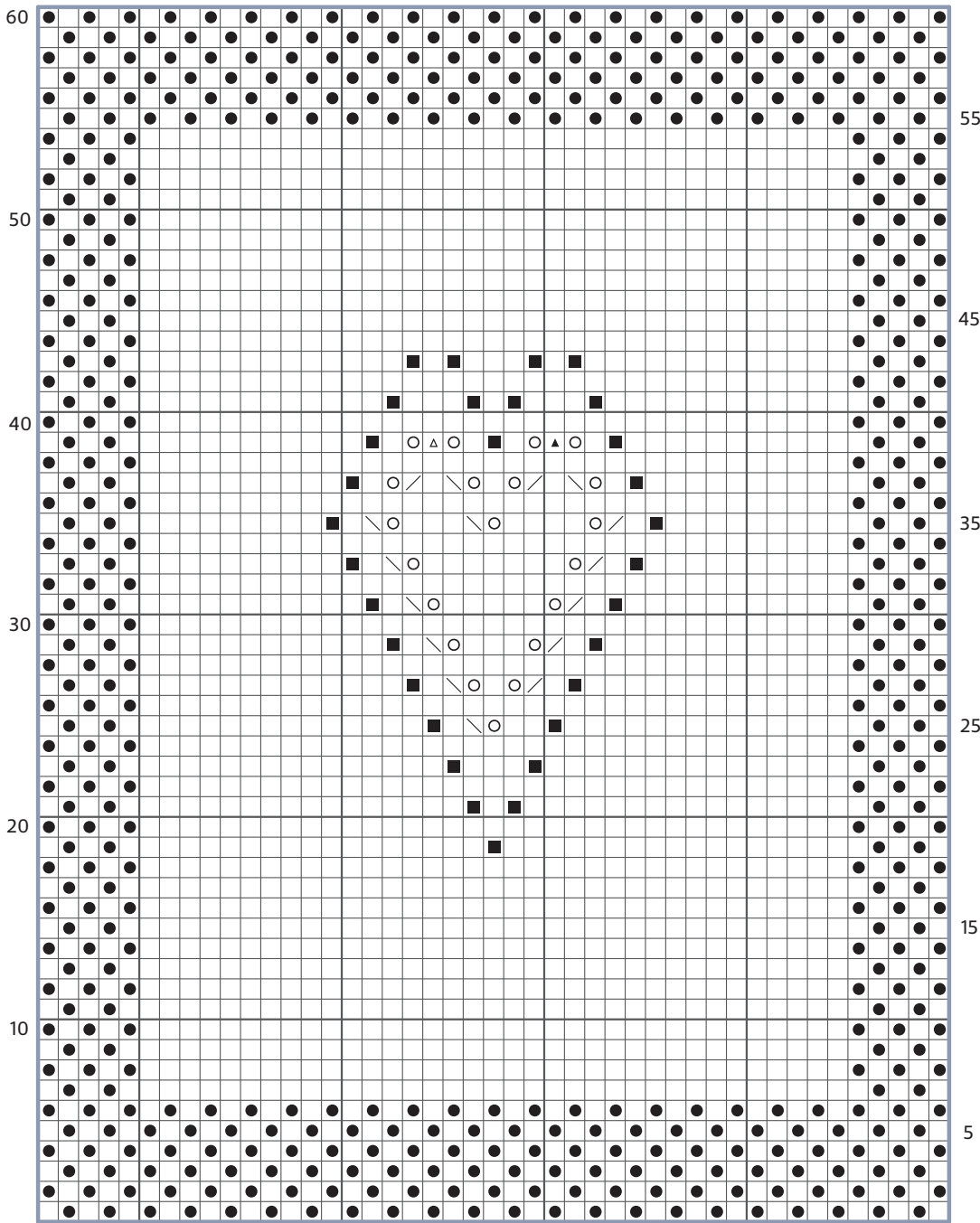
st(s): stitch(es)

tbl: through back of loops

WS: wrong side

yfwd: yarn forward to make a stitch

CHART



45 sts

KEY

- RS, K
WS, P
- RS, P
WS, K
- place bead
- yfwd
- ↗ K2tog
- ↘ K2tog tbl
- ▲ Sl 1, K2tog, pssso
- △ dec.2