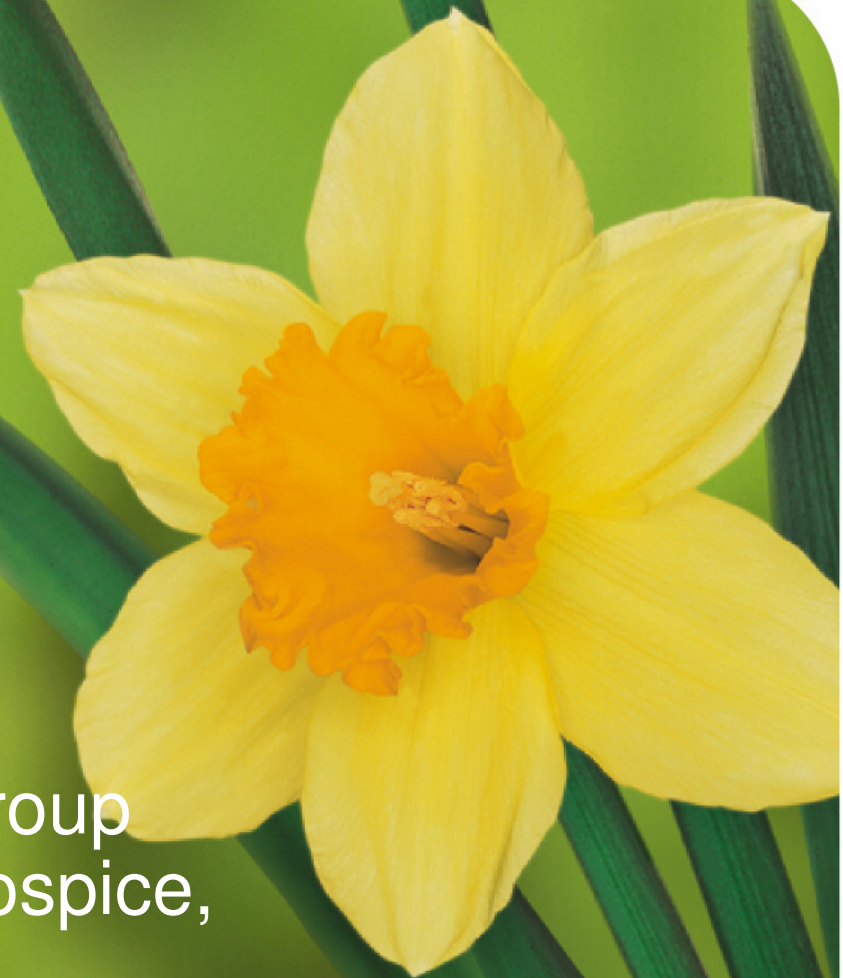


Delivering Choice at End of Life

Bob Neilans

Chair, Mid Trent Cancer

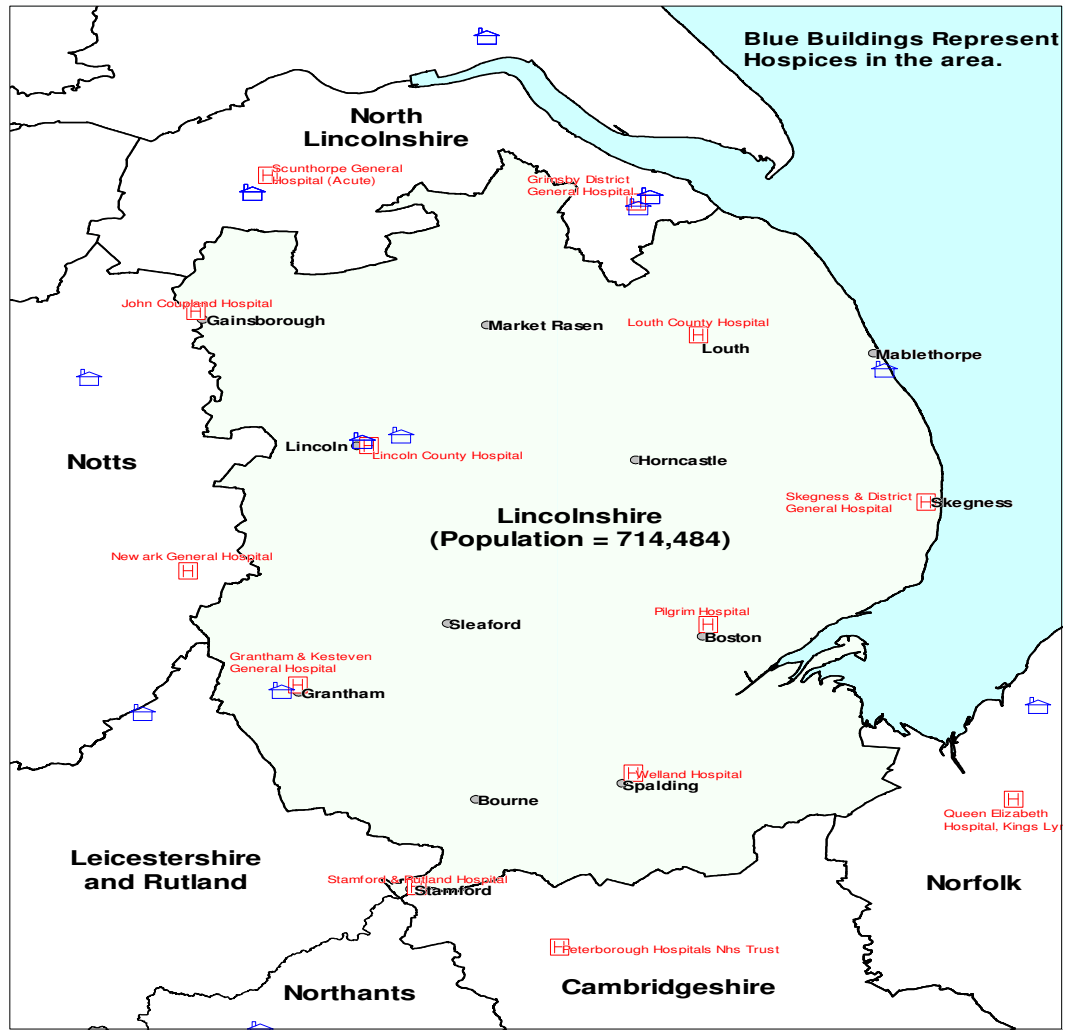
Network Palliative Care Group
and Chair, St Barnabas Hospice,
Lincoln



Latest developments in End of Life Care

- End of Life Care –
 - What is it?
 - Where does it fit?
- Palliative Care
 - What is it?
 - Getting it right

Lincolnshire and the Surrounding Area



Lincolnshire Palliative Care - Pre Delivering Choice

- No Palliative Care Consultant
- Gaps and variability in Out of Hours Care
- Major funding issues within the County
- Only 11 specialist beds to serve a 700,000 population
- 25% of population without Hospice at Home

Delivering Choice Programme

- Approach from Marie Curie Sept 2004
- Offering choice to all palliative care patients
- Reducing costs
- Evaluation and dissemination of the outcomes

Marie Curie Delivering Choice Programme

- Managerial Sign-up
- Audit of Services and Patients
- Models devised
- Model development/implementation

Project partners



Mid Trent Cancer Network



Lincolnshire Ambulance Trust

Lincolnshire Social Services



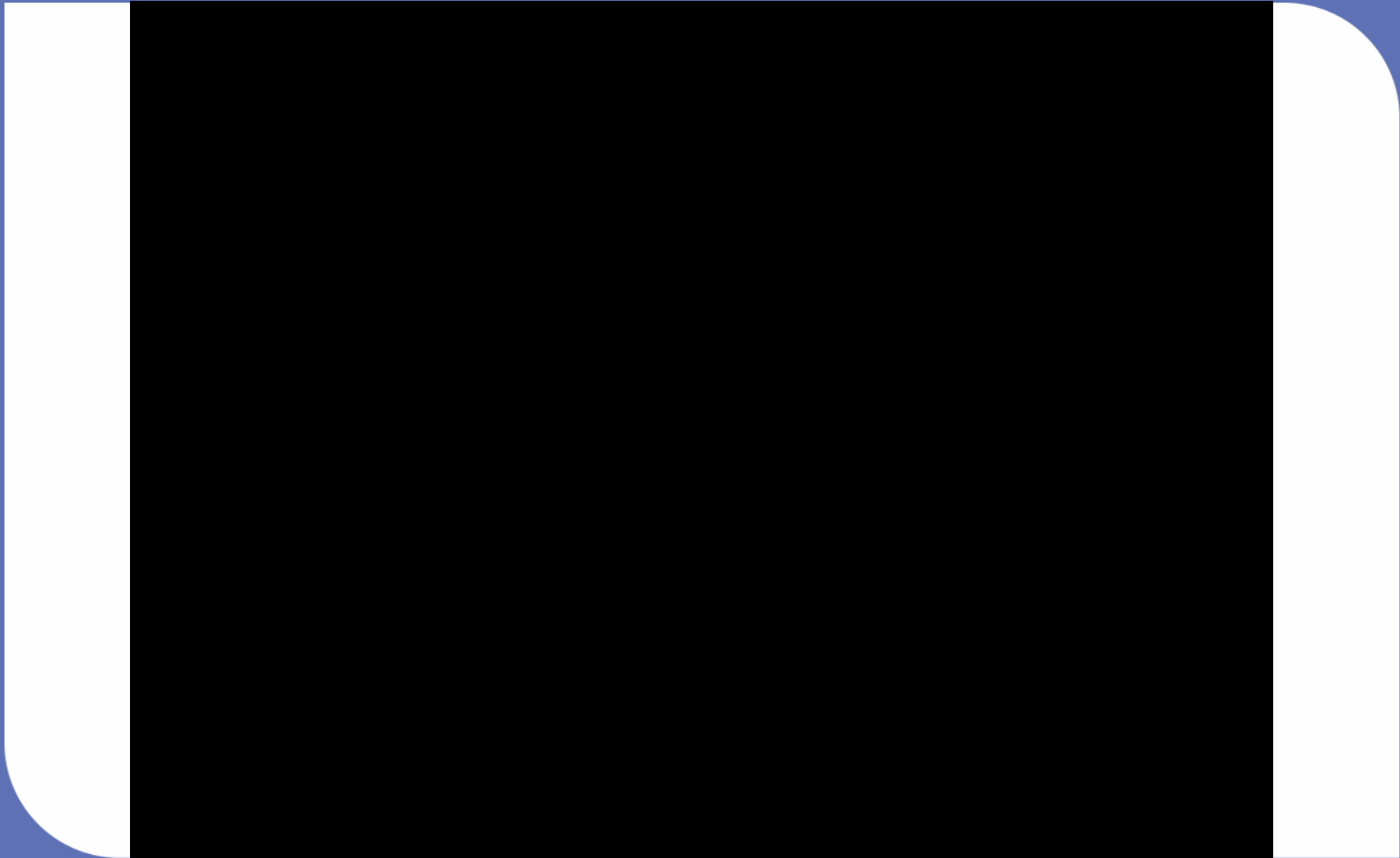
What did we implement?

- Palliative Care Co-ordination Centre
- Rapid Response Team
- Discharge Liaison Nurses
- Patient and Carer Support
- Education and Investment in Videoconferencing
- And all in 4 months!

Opportunities and challenges

- *“Complications arose, ensued and were overcome.”* –
Captain Jack Sparrow





Does it work?

- Increase in deaths at home
- Savings in the acute sector
- Effective partnership working
- Bringing health and social care together
- High quality care
- A better experience for all

The DCP effect

For patients benefiting from Delivering Choice services:

- Deaths at home UP from 17% to 42%
- Deaths in hospital DOWN from 63% to 45% •
- Total costs for end of life care DOWN 8% •

The DCP effect

- Outputs
 - Measurables
 - Patient benefits
- Outcomes
 - Cultural shift
 - New working practices
 - High profile of palliative care

What has changed?

- Better understanding of patient need
- Better understanding of the services required
- Greater collaboration

Lincolnshire Palliative Care - Post Delivering Choice

- No Palliative Care Consultant
- Out of Hours Care
- Major funding issues within the County
- Only 11 specialist beds to serve a 700,000 population
- 25% of population without Hospice at Home

Summary

- Delivering Choice – Evidence based success
- Material patient benefit
- Voluntary Sector leadership
- Exciting times – would you have it any other way?



**St Barnabas
Lincolnshire Hospice**

